

limma:
Linear Models for Microarray Data
User's Guide

Gordon K. Smyth, Matthew Ritchie, Natalie Thorne,
James Wettenhall and Wei Shi
Bioinformatics Division, The Walter and Eliza Hall Institute
of Medical Research, Melbourne, Australia

3 April 2010

This free open-source software implements academic research by the authors and co-workers. If you use it, please support the project by citing the appropriate journal articles listed in Section 2.1.

Contents

1	Introduction	3
2	Preliminaries	4
2.1	Citing limma	4
2.2	Installation	5
2.3	How to get help	6
3	Quick Start	7
3.1	A brief introduction to R	7
3.2	Sample limma Session	8
3.3	Data Objects	9
4	Reading Two-Color Data	11
4.1	Scope of this Chapter	11
4.2	Recommended Files	11
4.3	The Targets Frame	11
4.4	Reading in Intensity Data	13
4.5	Image-derived Spot Quality Weights	15
4.6	Reading the Gene List	16
4.7	Printer Layout	17
4.8	The Spot Types File	17
5	Quality Assessment	20
6	Pre-Processing Two-Color Data	22
6.1	Background Correction	22
6.2	Within-Array Normalization	24
6.3	Between-Array Normalization	26
6.4	Using Objects from the marray Package	29
7	Linear Models Overview	30
7.1	Introduction	30
7.2	Affymetrix and Other Single-Channel Designs	31
7.3	Common Reference Designs	32

7.4	Direct Two-Color Designs	33
8	Specific Designs	35
8.1	Simple Comparisons	35
	8.1.1 Replicate Arrays	35
	8.1.2 Dye Swaps	35
8.2	Technical Replication	36
8.3	Paired Samples	40
8.4	Two Groups: Common Reference	40
8.5	Two Groups: Affymetrix	43
8.6	Several Groups	44
8.7	Factorial Designs	45
8.8	Time Course Experiments	48
9	Separate Channel Analysis of Two-Color Data	50
10	Statistics for Differential Expression	52
10.1	Summary Top-Tables	52
10.2	Fitted Model Objects	53
10.3	Multiple Testing Across Contrasts	54
10.4	Array Quality Weights	55
11	Case Studies	60
11.1	Swirl Zebrafish: A Single-Sample Experiment	60
11.2	ApoAI Knockout Data: A Two-Sample Experiment	71
11.3	Ecoli Lrp Data: Affymetrix Data with Two Targets	74
11.4	Estrogen Data: A 2x2 Factorial Experiment with Affymetrix Arrays	77
11.5	Weaver Mutant Data: A 2x2 Factorial Experiment with Two-Color Data	81
11.6	Bob Mutant Data: Within-Array Replicate Spots	85
11.7	Illumina WG-6 Case Study: Mammary Progenitor Cell Populations	89

Chapter 1

Introduction

Limma is a package for the analysis of gene expression microarray data, especially the use of linear models for analysing designed experiments and the assessment of differential expression. Limma provides the ability to analyze comparisons between many RNA targets simultaneously. It has features which make the analyses stable even for experiments with small number of arrays—this is achieved by borrowing information across genes. The normalization and exploratory data analysis functions are for two-color spotted microarrays. The linear model and differential expression functions apply to all microarrays including Affymetrix and other single-channel microarray experiments.

This guide gives a tutorial-style introduction to the main `limma` features but does not describe every feature of the package. A full description of the package is given by the individual function help documents available from the R online help system. To access the online help, type `help(package=limma)` at the R prompt or else start the html help system using `help.start()` or the Windows drop-down help menu.

The Bioconductor package `marray` provides alternative functions for reading and normalizing spotted microarray data. The `marray` package provides flexible location and scale normalization routines for log-ratios from two-color arrays. The `limma` package overlaps with `marray` in functionality but is based on a more general separation between within-array and between-array normalization. If you are using `limma` in conjunction with `marray`, see Section 6.4. The Bioconductor package `affy` provides functions for reading and normalizing Affymetrix microarray data. Advice on how to use `limma` with the `affy` package is given throughout the User's Guide, see for example Section 7.2 and the *E. coli* and estrogen case studies.

This guide describes `limma` as a command-driven package. Graphical user interfaces to the most commonly used functions in `limma` are available through the packages `limmaGUI` [35], for two-color data, or `affylmGUI` [34], for Affymetrix data. Both packages are available from Bioconductor.

This user's guide should be correct for R Versions 2.8.0 to 2.10.0 and `limma` versions 2.16.0 to 3.2.0. The `limma` homepage is <http://bioinf.wehi.edu.au/limma>.

Chapter 2

Preliminaries

2.1 Citing limma

Limma is an implementation of a body of methodological research by the authors and co-workers. Please cite the appropriate methodological papers whenever you use results from the `limma` software in a publication. Such citations are the main means by which the authors receive professional credit for their work.

If you use `limma` for differential expression analysis, please cite:

Smyth, G. K. (2004). Linear models and empirical Bayes methods for assessing differential expression in microarray experiments. *Statistical Applications in Genetics and Molecular Biology*, Vol. 3, No. 1, Article 3.
<http://www.bepress.com/sagmb/vol3/iss1/art3>

The above article describes the linear modeling approach implemented by `lmFit` and the empirical Bayes statistics implemented by `eBayes`, `topTable` etc.

If you use `limma` with duplicate spots or technical replication, please cite

Smyth, G. K., Michaud, J., and Scott, H. (2005). The use of within-array replicate spots for assessing differential expression in microarray experiments. *Bioinformatics* **21**(9), 2067–2075.
<http://bioinformatics.oxfordjournals.org/cgi/content/short/21/9/2067>

The above article describes the theory behind the `duplicateCorrelation` function.

If you use `limma` for normalization of two-color microarray data, please cite:

Smyth, G. K., and Speed, T. P. (2003). Normalization of cDNA microarray data. *Methods* **31**, 265–273.

The above article describes the functions `read.maimages`, `normalizeWithinArrays`, `normalizeBetweenArrays` etc, including the use of spot quality weights.

If you use the `backgroundCorrect` function, please cite:

Ritchie, M. E., Silver, J., Oshlack, A., Silver, J., Holmes, M., Diyagama, D., Holloway, A., and Smyth, G. K. (2007). A comparison of background correction methods for two-colour microarrays. *Bioinformatics* 23, 2700–2707.
<http://bioinformatics.oxfordjournals.org/cgi/content/abstract/btm412>

This paper in particular describes the *normexp* background correction method.

If you use *limma* to estimate array quality weights, please cite:

Ritchie, M. E., Diyagama, D., Neilson, van Laar, R., J., Dobrovic, A., Holloway, A., and Smyth, G. K. (2006). Empirical array quality weights in the analysis of microarray data. *BMC Bioinformatics* 7, 261.
<http://www.biomedcentral.com/1471-2105/7/261>

The above article describes the functions `arrayWeights`, `arrayWeightsSimple` etc.

The *limma* software itself can be cited as:

Smyth, G. K. (2005). *Limma: linear models for microarray data*. In: *Bioinformatics and Computational Biology Solutions using R and Bioconductor*, R. Gentleman, V. Carey, S. Dudoit, R. Irizarry, W. Huber (eds.), Springer, New York, pages 397–420.

The above article describes the software package in the context of the Bioconductor project and surveys the range of experimental designs for which the package can be used, including spot-specific dye-effects. The pre-processing capabilities of the package are also described but more briefly, with examples of background correction, spot quality weights and filtering with control spots.

Finally, if you are using one of the menu-driven interfaces to the software, please cite the appropriate one of

Wettenhall, J. M., and Smyth, G. K. (2004). *limmaGUI: a graphical user interface for linear modeling of microarray data*. *Bioinformatics*, 20, 3705–3706.

Wettenhall, J. M., Simpson, K. M., Satterley, K., and Smyth, G. K. (2006). *affyImGUI: a graphical user interface for linear modeling of single channel microarray data*. *Bioinformatics* 22, 897–899.

2.2 Installation

Limma is a package for the R computing environment and it is assumed that you have already installed R. See the R project at <http://www.r-project.org>. If you are using R 2.5.1 or earlier, *limma* is available either the R Project CRAN site or from the Bioconductor repository. If you are using R 2.6.0 or later, *limma* is available only from Bioconductor.

Installing from Bioconductor. *Limma* is available as part of the Bioconductor project at <http://www.bioconductor.org>. It is one of a default set of packages installed by `biocLite`. You can install the core Bioconductor packages by

```
> source("http://www.bioconductor.org/biocLite.R")
> biocLite()
```

To get just `limma` and its suggested package dependencies you can use

```
> biocLite("limma",dependencies=TRUE)
```

Note that Bioconductor works on a 6-monthly official release cycle, lagging each major R release by a few weeks.

Change-log. `limma` is updated frequently, sometimes a couple of times a week. Once you have installed `limma`, the change-log can also be viewed from the R prompt. To see the most recent 20 lines type:

```
> changeLog(n=20)
```

2.3 How to get help

Most questions about `limma` will hopefully be answered by the documentation or references. If you've run into a question which isn't addressed by the documentation, or you've found a conflict between the documentation and software itself, then there is an active support community which can offer help.

The authors of the package always appreciate receiving reports of bugs in the package functions or in the documentation. The same goes for well-considered suggestions for improvements.

Any other questions or problems concerning `limma` should be sent to the Bioconductor mailing list `bioconductor@stat.math.ethz.ch`. To subscribe to the mailing list, see <https://stat.ethz.ch/mailman/listinfo/bioconductor>. Please send requests for general assistance and advice to the mailing list rather than to the individual authors. Users posting to the mailing list for the first time should read the helpful posting guide at <http://www.bioconductor.org/doc/postingGuide.html>. Note that each function in `limma` has its own online help page, as described in the next section. Mailing list etiquette requires that you read the relevant help page carefully before posting a problem to the list.

Chapter 3

Quick Start

3.1 A brief introduction to R

R is a program for statistical computing. It is a command-driven language meaning that you have to type commands into it rather than pointing and clicking using a mouse. In this guide it will be assumed that you have successfully downloaded and installed R from <http://www.r-project.org>. A good way to get started is to type

```
> help.start()
```

at the R prompt or, if you're using R for Windows, to follow the drop-down menu items **Help** \succ **Html help**. Following the links **Packages** \succ **limma** from the html help page will lead you to the contents page of help topics for functions in **limma**.

Before you can use any **limma** commands you have to load the package by typing

```
> library(limma)
```

at the R prompt. You can get help on any function in any loaded package by typing `?` and the function name at the R prompt, for example

```
> ?read.maimages
```

or equivalently

```
> help("read.maimages")
```

for detailed help on the `read.maimages` function. The individual function help pages are especially important for listing all the arguments which a function will accept and what values the arguments can take.

A key to understanding R is to appreciate that anything that you create in R is an “object”. Objects might include data sets, variables, functions, anything at all. For example

```
> x <- 2
```

will create a variable `x` and will assign it the value 2. At any stage of your R session you can type


```
> objects()
```

to get a list of all the objects you have created. You can see the contents of any object by typing the name of the object at the prompt, for example either of the following commands will print out the contents of `x`:

```
> show(x)
> x
```

We hope that you can use `limma` without having to spend a lot of time learning about the R language itself but a little knowledge in this direction will be very helpful, especially when you want to do something not explicitly provided for in `limma` or in the other Bioconductor packages. For more details about the R language see *An Introduction to R* which is available from the online help. For more background on using R for statistical analyses see [5].

3.2 Sample `limma` Session

This is a quick overview of what an analysis might look like. The first example assumes four replicate two-color arrays, the second and fourth of which are dye-swapped. We assume that the images have been analyzed using GenePix to produce a `.gpr` file for each array and that a targets file `targets.txt` has been prepared with a column containing the names of the `.gpr` files.

```
> library(limma)
> targets <- readTargets("targets.txt")
```

Set up a filter so that any spot with a flag of -99 or less gets zero weight.

```
> f <- function(x) as.numeric(x$Flags > -99)
```

Read in the data.

```
> RG <- read.maimages(targets, source="genepix", wt.fun=f)
```

The following command implements a type of adaptive background correction. This is optional but recommended for GenePix data.

```
> RG <- backgroundCorrect(RG, method="normexp", offset=50)
```

Print-tip loess normalization:

```
> MA <- normalizeWithinArrays(RG)
```

Estimate the fold changes and standard errors by fitting a linear model for each gene. The design matrix indicates which arrays are dye-swaps.

```
> fit <- lmFit(MA, design=c(-1,1,-1,1))
```

Apply empirical Bayes smoothing to the standard errors.

```
> fit <- eBayes(fit)
```

Show statistics for the top 10 genes.

```
> topTable(fit)
```

The second example assumes Affymetrix arrays hybridized with either wild-type (wt) or mutant (mt) RNA. There should be three or more arrays in total to ensure some replication. The targets file is now assumed to have another column **Genotype** indicating which RNA source was hybridized on each array.

```
> library(gcrma)
> library(limma)
> targets <- readTargets("targets.txt")
```

Read and pre-process the Affymetrix CEL file data.

```
> ab <- ReadAffy(filenamees=targets$FileName)
> eset <- gcrma(ab)
```

Form an appropriate design matrix for the two RNA sources and fit linear models. The design matrix has two columns. The first represents log-expression in the wild-type and the second represents the log-ratio between the mutant and wild-type samples. See Section 8.5 for more details on the design matrix.

```
> design <- cbind(WT=1, MUvsWT=targets$Genotype=="mu")
> fit <- lmFit(eset, design)
> fit <- eBayes(fit)
> topTable(fit, coef="MUvsWT")
```

This code fits the linear model, smooths the standard errors and displays the top 10 genes for the mutant versus wild-type comparison.

3.3 Data Objects

There are four main types of data objects created and used in **limma**:

RGList. Red-Green list. A class used to store raw intensities as they are read in from an image analysis output file, usually by `read.maimages()`.

MAList. Intensities converted to M-values and A-values, i.e., to within-spot and whole-spot contrasts on the log-scale. Usually created from an **RGList** using `MA.RG()` or `normalizeWithinArrays()`. Objects of this class contain one row for each spot. There may be more than one spot and therefore more than one row for each probe.

MArrayLM. Store the result of fitting gene-wise linear models to the normalized intensities or log-ratios. Usually created by `lmFit()`. Objects of this class normally contain one row for each unique probe.

TestResults. Store the results of testing a set of contrasts equal to zero for each probe. Usually created by `decideTests()`. Objects of this class normally contain one row for each unique probe.

For those who are familiar with matrices in R, all these objects are designed to obey many analogies with matrices. In the case of `RGList` and `MAList`, rows correspond to spots and columns to arrays. In the case of `MarrayLM`, rows correspond to unique probes and columns to parameters or contrasts. The functions `summary`, `dim`, `length`, `ncol`, `nrow`, `dimnames`, `rownames`, `colnames` have methods for these classes. For example

```
> dim(RG)

[1] 11088 4
```

shows that the `RGList` object `RG` contains data for 11088 spots and 4 arrays.

```
> colnames(RG)
```

will give the names of the filenames or arrays in the object, while if `fit` is an `MarrayLM` object then

```
> colnames(fit)
```

would give the names of the coefficients in the linear model fit.

Objects of any of these classes may be subsetted, so that `RG[,j]` means the data for array `j` and `RG[i,]` means the data for probes indicated by the index `i`. Multiple data objects may be combined using `cbind`, `rbind` or `merge`. Hence

```
> RG1 <- read.maimages(files[1:2], source="genepix")
> RG2 <- read.maimages(files[3:5], source="genepix")
> RG <- cbind(RG1, RG2)
```

is equivalent to

```
> RG <- read.maimages(files[1:5], source="genepix")
```

Alternatively, if control status has been set in the `MAList` object then

```
> i <- MA$genes$Status=="Gene"
> MA[i,]
```

might be used to eliminate control spots from the data object prior to fitting a linear model.

Chapter 4

Reading Two-Color Data

4.1 Scope of this Chapter

This chapter is for two-color arrays. If you are using Affymetrix arrays, you should use the `affy` or `affyPLM` packages to read and normalize the data. If you have single channel arrays other than Affymetrix, you will need to read the intensity data into your R session yourself using the basic R read functions such as `read.table`. You will need to create a matrix containing the log-intensities with rows for probes and columns for arrays.

4.2 Recommended Files

We assume that an experiment has been conducted with one or more microarrays, all printed with the same library of probes. Each array has been scanned to produce a TIFF image. The TIFF images have then been processed using an image analysis program such as ArrayVision, ImaGene, GenePix, QuantArray or SPOT to acquire the red and green foreground and background intensities for each spot. The spot intensities have then been exported from the image analysis program into a series of text files. There should be one file for each array or, in the case of Imogene, two files for each array.

You will need to have the image analysis output files. In most cases these files will include the IDs and names of the probes and possibly other annotation information. A few image analysis programs, for example SPOT, do not write the probe IDs into the output files. In this case you will also need a *genelist file* which describes the probes. In most cases it is also desirable to have a *targets file* which describes which RNA sample was hybridized to each channel of each array. A further optional file is the *spot types file* which identifies special probes such as control spots.

4.3 The Targets Frame

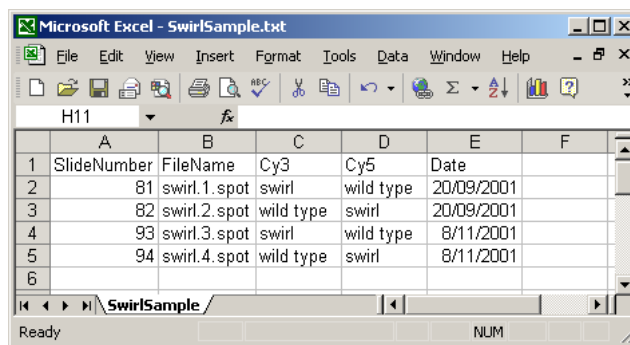
The first step in preparing data for input into `limma` is usually to create a targets file which lists the RNA target hybridized to each channel of each array. It is normally in tab-delimited

text format and should contain a row for each microarray in the experiment. The file can have any name but the default is `Targets.txt`. If it has the default name, it can be read into the R session using

```
> targets <- readTargets()
```

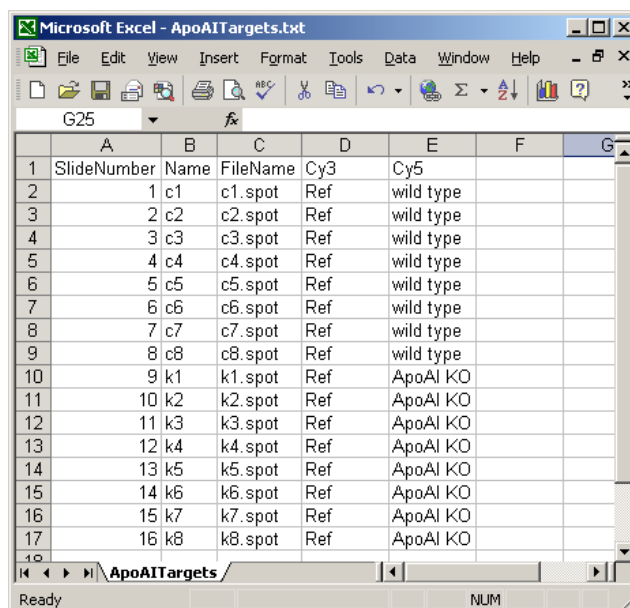
Once read into R, it becomes the *targets frame*.

The targets frame normally contains a `FileName` column, giving the name of the image-analysis output file, a `Cy3` column giving the RNA type labelled with Cy3 dye for that slide and a `Cy5` column giving the RNA type labelled with Cy5 dye for that slide. Other columns are optional. The targets file can be prepared using any text editor but spreadsheet programs such as Microsoft Excel are convenient. The targets file for the Swirl case study includes optional `SlideNumber` and `Date` columns:



	A	B	C	D	E	F
1	SlideNumber	FileName	Cy3	Cy5	Date	
2	81	swirl.1.spot	swirl	wild type	20/09/2001	
3	82	swirl.2.spot	wild type	swirl	20/09/2001	
4	93	swirl.3.spot	swirl	wild type	8/11/2001	
5	94	swirl.4.spot	wild type	swirl	8/11/2001	
6						

It is often convenient to create short readable labels to associate with each array for use in output and in plots, especially if the file names are long or non-intuitive. A column containing these labels can be included in the targets file, for example the `Name` column used for the ApoAI case study:



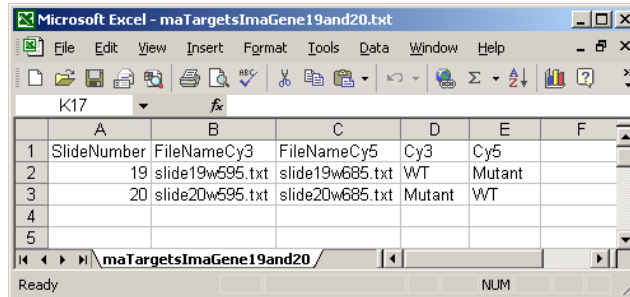
	A	B	C	D	E	F	G
1	SlideNumber	Name	FileName	Cy3	Cy5		
2	1	c1	c1.spot	Ref	wild type		
3	2	c2	c2.spot	Ref	wild type		
4	3	c3	c3.spot	Ref	wild type		
5	4	c4	c4.spot	Ref	wild type		
6	5	c5	c5.spot	Ref	wild type		
7	6	c6	c6.spot	Ref	wild type		
8	7	c7	c7.spot	Ref	wild type		
9	8	c8	c8.spot	Ref	wild type		
10	9	k1	k1.spot	Ref	ApoAI KO		
11	10	k2	k2.spot	Ref	ApoAI KO		
12	11	k3	k3.spot	Ref	ApoAI KO		
13	12	k4	k4.spot	Ref	ApoAI KO		
14	13	k5	k5.spot	Ref	ApoAI KO		
15	14	k6	k6.spot	Ref	ApoAI KO		
16	15	k7	k7.spot	Ref	ApoAI KO		
17	16	k8	k8.spot	Ref	ApoAI KO		

This column can be used to create row names for the targets frame by

```
> targets <- readTargets("targets.txt", row.names="Name")
```

The row names can be propagated to become array names in the data objects when these are read in.

For ImaGene files, the `FileName` column is split into a `FileNameCy3` column and a `FileNameCy5` because ImaGene stores red and green intensities in separate files. This is a short example:



	A	B	C	D	E	F
1	SlideNumber	FileNameCy3	FileNameCy5	Cy3	Cy5	
2	19	slide19w595.txt	slide19w685.txt	WT	Mutant	
3	20	slide20w595.txt	slide20w685.txt	Mutant	WT	
4						
5						

4.4 Reading in Intensity Data

Let `files` be a character vector containing the names of the image analysis output files. The foreground and background intensities can be read into an `RGList` object using a command of the form

```
> RG <- read.maimages(files, source="<imageanalysisprogram>", path="<directory>")
```

where `<imageanalysisprogram>` is the name of the image analysis program and `<directory>` is the full path of the directory containing the files. If the files are in the current R working directory then the argument `path` can be omitted; see the help entry for `setwd` for how to set the current working directory. The file names are usually read from the Targets File. For example, the Targets File `Targets.txt` is in the current working directory together with the SPOT output files, then one might use

```
> targets <- readTargets()  
> RG <- read.maimages(targets$FileName, source="spot")
```

Alternatively, and even more simply, one may give the targets frame itself in place of the `files` argument as

```
> RG <- read.maimages(targets, source="spot")
```

In this case the software will look for the column `FileName` in the targets frame.

If the files are GenePix output files then they might be read using

```
> RG <- read.maimages(targets, source="genepix")
```

given an appropriate targets file. Consult the help entry for `read.maimages` to see which other image analysis programs are supported. Files are assumed by default to be tab-delimited, although other separators can be specified using the `sep=` argument.

Reading data from ImaGene software is a little different to that of other image analysis programs because the red and green intensities are stored in separate files. This means that the targets frame should include two filename columns called, say, `FileNameCy3` and `FileNameCy5`, giving the names of the files containing the green and red intensities respectively. An example is given in Section 4.3. Typical code with ImaGene data might be

```
> targets <- readTargets()
> files <- targets[,c("FileNameCy3","FileNameCy5")]
> RG <- read.maimages(files, source="imagene")
```

For ImaGene data, the `files` argument to `read.maimages()` is expected to be a 2-column matrix of filenames rather than a vector.

The following table gives the default estimates used for the foreground and background intensities:

Source	Foreground	Background
agilent	Mean Signal	Median Signal
bluefuse	AMPCH	None
genepix	F Mean	B Median
genepix.median	F Median	B Median
genepix.custom	Mean	B
imagene	Signal Mean	Signal Median, or Signal Mean if auto segmentation has been used
quantarray	Intensity	Background
scanarrayexpress	Mean	Median
smd.old	I_MEAN	B_MEDIAN
smd	Intensity (Mean)	Background (Median)
spot	mean	morph
spot.close.open	mean	morph.close.open

The default estimates can be over-ridden by specifying the `columns` argument to `read.maimages()`. Suppose for example that GenePix has been used with a custom background method, and you wish to use median foreground estimates. This combination of foreground and background is not provided as a pre-set choice in `limma`, but you can specify it by

```
> RG <- read.maimages(files,source="genepix",
+   columns=list(R="F635 Median",G="F532 Median",Rb="B635",Gb="B532"))
```

What should you do if your image analysis program is not in the above list? If the image output files are in standard format, then you can supply the annotation and intensity column names yourself. For example,

```
> RG <- read.maimages(files,
+   columns=list(R="F635 Mean",G="F532 Mean",Rb="B635 Median",Gb="B532 Median"),
+   annotation=c("Block","Row","Column","ID","Name"))
```

is exactly equivalent to `source="genepix"`. “Standard format” means here that there is a unique column name identifying each column of interest and that there are no lines in the file following the last line of data. Header information at the start of the file is acceptable, but extra lines at the end of the file will cause the read to fail.

It is a good idea to look at your data to check that it has been read in correctly. Type

```
> show(RG)
```

to see a print out of the first few lines of data. Also try

```
> summary(RG$R)
```

to see a five-number summary of the red intensities for each array, and so on.

It is possible to read the data in several steps. If `RG1` and `RG2` are two data sets corresponding to different sets of arrays then

```
> RG <- cbind(RG1, RG2)
```

will combine them into one large data set. Data sets can also be subsetted. For example `RG[,1]` is the data for the first array while `RG[1:100,]` is the data on the first 100 genes.

4.5 Image-derived Spot Quality Weights

Image analysis programs typically output a lot of information, in addition to the foreground and background intensities, which provides information on the quality of each spot. It is sometimes desirable to use this information to produce a quality index for each spot which can be used in the subsequent analysis steps. One approach is to remove all spots from consideration which do not satisfy a certain quality criterion. A more sophisticated approach is to produce a quantitative quality index which can be used to up or downweight each spot in a graduated way depending on its perceived reliability. `limma` provides an approach to spot weights which supports both of these approaches.

The `limma` approach is to compute a quantitative quality weight for each spot. Weights are treated similarly in `limma` as they are treated in most regression functions in R such as `lm()`. A zero weight indicates that the spot should be ignored in all analysis as being unreliable. A weight of 1 indicates normal quality. A spot quality weight greater or less than one will result in that spot being given relatively more or less weight in subsequent analyses. Spot weights less than zero are not meaningful.

The quality information can be read and the spot quality weights computed at the same time as the intensities are read from the image analysis output files. The computation of the quality weights is defined by the `wt.fun` argument to the `read.maimages()` function. This argument is a function which defines how the weights should be computed from the information found in the image analysis files. Deriving good spot quality weights is far from straightforward and depends very much on the image analysis software used. `limma` provides a few examples which have been found to be useful by some researchers.

Some image analysis programs produce a quality index as part of the output. For example, `GenePix` produces a column called `Flags` which is zero for a “normal” spot and takes

increasingly negative values for different classes of problem spot. If you are reading GenePix image analysis files, the call

```
> RG <- read.maimages(files,source="genepix",wt.fun=wtflags(weight=0,cutoff=-50))
```

will read in the intensity data and will compute a matrix of spot weights giving zero weight to any spot with a `Flags`-value less than -50 . The weights are stored in the `weights` component of the `RGList` data object. The weights are used automatically by functions such as `normalizeWithinArrays` which operate on the `RG`-list.

Sometimes the ideal size, in terms of image pixels, is known for a perfectly circular spot. In this case it may be useful to downweight spots which are much larger or smaller than this ideal size. If SPOT image analysis output is being read, the following call

```
> RG <- read.maimages(files,source="spot",wt.fun=wtarea(100))
```

gives full weight to spots with area exactly 100 pixels and down-weights smaller and larger spots. Spots which have zero area or are more than twice the ideal size are given zero weight.

The appropriate way to computing spot quality weights depends on the image analysis program used. Consult the help entry `QualityWeights` to see what quality weight functions are available. The `wt.fun` argument is very flexible and allows you to construct your own weights. The `wt.fun` argument can be any function which takes a data set as argument and computes the desired weights. For example, if you wish to give zero weight to all GenePix flags less than -50 you could use

```
> myfun <- function(x) as.numeric(x$Flags > -50.5)
> RG <- read.maimages(files, source="genepix", wt.fun=myfun)
```

The `wt.fun` facility can be used to compute weights based on any number of columns in the image analysis files. For example, some researchers like to filter out spots if the foreground mean and median from GenePix for a given spot differ by more than a certain threshold, say 50. This could be achieved by

```
> myfun <- function(x, threshold=50) {
+   okred <- abs(x[, "F635 Median"]-x[, "F635 Mean"]) < threshold
+   okgreen <- abs(x[, "F532 Median"]-x[, "F532 Mean"]) < threshold
+   as.numeric(okgreen & okred)
+}
> RG <- read.maimages(files, source="genepix", wt.fun=myfun)
```

Then all the “bad” spots will get weight zero which, in `limma`, is equivalent to flagging them out. The definition of `myfun` here could be replaced with any other code to compute weights using the columns in the GenePix output files.

4.6 Reading the Gene List

The `RGList` read by `read.maimages()` will almost always contain a component called `genes` containing the IDs and other annotation information associated with the probes. The only exceptions are SPOT data, `source="spot"`, or when reading generic data, `source="generic"`, without setting the annotation argument, `annotation=NULL`. Try

```
> names(RG$genes)
```

to see if the `genes` component has been set.

If the `genes` component is not set, the probe IDs will need to be read from a separate file. If the arrays have been scanned with an Axon scanner, then the probes IDs will be available in a tab-delimited GenePix Array List (GAL) file. If the GAL file has extension “gal” and is in the current working directory, then it may be read into a `data.frame` by

```
> RG$genes <- readGAL()
```

Non-GenePix gene lists can be read into R using the function `read.delim` from R base.

4.7 Printer Layout

The printer layout is the arrangement of spots and blocks of spots on the arrays. The blocks are sometimes called print-tip groups or pin-groups or meta rows and columns. Each block corresponds to a print tip on the print-head used to print the arrays, and the layout of the blocks on the arrays corresponds to the layout of the tips on the print-head. The number of spots in each block is the number of times the print-head was lowered onto the array. Where possible, for example for Agilent, GenePix or ImaGene data, `read.maimages` will set the printer layout information in the component `printer`. Try

```
> names(RG$printer)
```

to see if the printer layout information has been set.

If you’ve used `readGAL` to set the `genes` component, you may also use `getLayout` to set the `printer` information by

```
> RG$printer <- getLayout(RG$genes)
```

Note this will work only for GenePix GAL files, not for general gene lists.

4.8 The Spot Types File

The Spot Types file (STF) is another optional tab-delimited text file which allows you to identify different types of spots from the gene list. The STF is used to set the control status of each spot on the arrays so that plots may highlight different types of spots in an appropriate way. It is typically used to distinguish control spots from those corresponding to genes of interest and to distinguish positive from negative controls, ratio from calibration controls and so on. The STF should have a `SpotType` column giving the names of the different spot-types. One or more other columns should have the same names as columns in the gene list and should contain patterns or regular expressions sufficient to identify the spot-type. Any other columns are assumed to contain plotting attributes, such as colors or symbols, to be associated with the spot-types. There is one row for each spot-type to be distinguished.

The STF uses simplified regular expressions to match patterns. For example, **AA*** means any string starting with **AA**, ***AA** means any code ending with **AA**, **AA** means exactly these two letters, ***AA*** means any string containing **AA**, **AA.** means **AA** followed by exactly one other character and **AA\.** means exactly **AA** followed by a period and no other characters. For those familiar with regular expressions, any other regular expressions are allowed but the codes **^** for beginning of string and **\$** for end of string should be excluded. Note that the patterns are matched sequentially from first to last, so more general patterns should be included first. The first row should specify the default spot-type and should have pattern ***** for all the pattern-matching columns.

Here is a short STF appropriate for the ApoAI data:

	A	B	C	D	E	F
1	SpotType	ID	Name	Color		
2	cDNA	*	*	black		
3	BLANK	BLANK	*	brown		
4	Blank	Blank	*	orange		
5	Control	Control	*	blue		
6						
7						
8						
9						
10						

In this example, the columns **ID** and **Name** are found in the gene-list and contain patterns to match. The asterisks are wildcards which can represent anything. Be careful to use upper or lower case as appropriate and don't insert any extra spaces. The remaining column gives colors to be associated with the different types of points. This code assumes of that the probe annotation data.frame includes columns **ID** and **Name**. This is usually so if GenePix has been used for the image analysis, but other image analysis software may use other column names.

Here is a STF below appropriate for arrays with Lucidea Universal ScoreCard control spots.

The screenshot shows a Microsoft Excel window titled "ml140503SpotTypes.txt". The spreadsheet contains the following data:

	A	B	C	D	E	F
1	SpotType	ID	Name	Color		
2	gene	*	*	black		
3	ratio	*	Ratio*	red		
4	calibration	*	Calibr*	blue		
5	utility	*	Utility*	pink		
6	negative	*	Negative*	brown		
7	buffer	*	Buffer	orange		
8	blank	blank	*	yellow		
9						

If the STF has default name `SpotTypes.txt` then it can be read using

```
> spottypes <- readSpotTypes()
```

It is typically used as an argument to the `controlStatus()` function to set the status of each spot on the array, for example

```
> RG$genes$Status <- controlStatus(spottypes, RG)
```

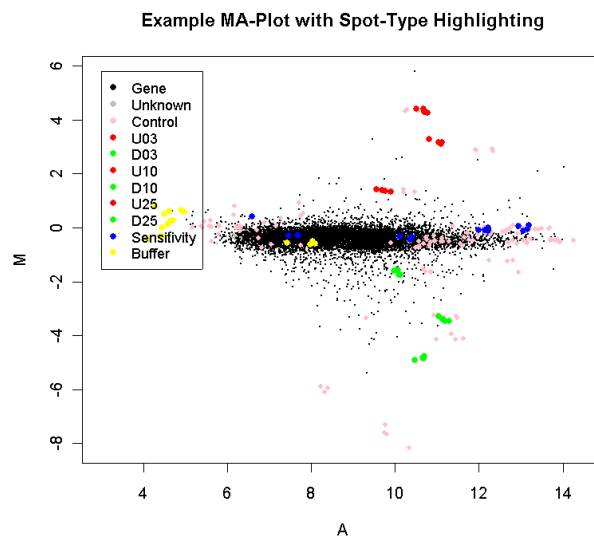
Chapter 5

Quality Assessment

An essential step in the analysis of any microarray data is to check the quality of the data from the arrays. For two-color array data, an essential step is to view the MA-plots of the unnormalized data for each array. The `plotMA()` function produces plots for individual arrays. The `plotMA3by2()` function gives an easy way to produce MA-plots for all the arrays in a large experiment. This functions writes plots to disk as png files, 6 plots to a page.

The usefulness of MA-plots is enhanced by highlighting various types of control probes on the arrays, and this is facilitated by the `controlStatus()` function. The following is an example MA-Plot for an Incyte array with various spike-in and other controls. (Data courtesy of Dr Steve Gerondakis, Walter and Eliza Hall Institute of Medical Research.) The data shows high-quality data with long comet-like pattern of non-differentially expressed probes and a small proportion of highly differentially expressed probes. The plot was produced using

```
> spottypes <- readSpotTypes()
> RG$genes$Status <- controlStatus(spottypes, RG)
> plotMA(RG)
```



The array includes spike-in ratio controls which are 3-fold, 10-fold and 25-fold up and down regulated, as well as non-differentially expressed sensitivity controls and negative controls.

The background intensities are also a useful guide to the quality characteristics of each array. Boxplots of the background intensities from each array

```
> boxplot(data.frame(log2(RG$Gb)),main="Green background")
> boxplot(data.frame(log2(RG$Rb)),main="Red background")
```

will highlight any arrays unusually with high background intensities.

Spatial heterogeneity on individual arrays can be highlighted by examining imageplots of the background intensities, for example

```
> imageplot(log2(RG$Gb[,1]),RG$printer)
```

plots the green background for the first array. The function `imageplot3by2()` gives an easy way to automate the production of plots for all arrays in an experiment.

If the plots suggest that some arrays are of lesser quality than others, it may be useful to estimate array quality weights to be used in the linear model analysis, see Section 10.4.

Chapter 6

Pre-Processing Two-Color Data

6.1 Background Correction

The default background correction action is to subtract the background intensity from the foreground intensity for each spot. If the `RGList` object has not already been background corrected, then `normalizeWithinArrays` will do this by default. Hence

```
> MA <- normalizeWithinArrays(RG)
```

is equivalent to

```
> RGb <- backgroundCorrect(RG, method="subtract")
> MA <- normalizeWithinArrays(RGb)
```

However there are many other background correction options which may be preferable in certain situations, see Ritchie et al [23].

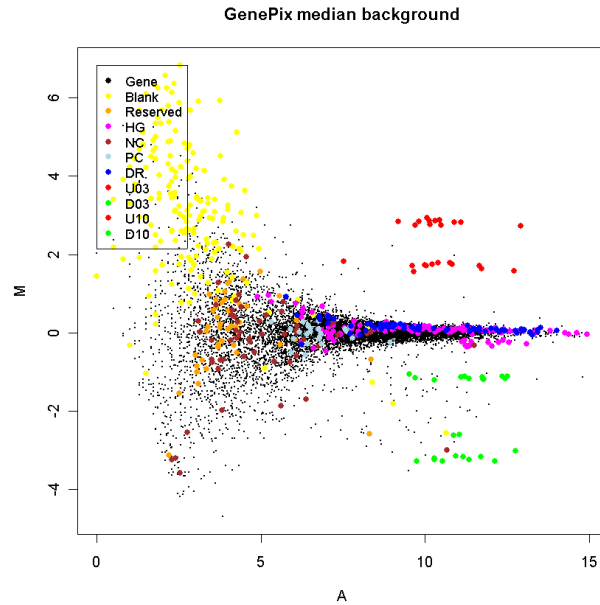
For the purpose of assessing differential expression, we often find

```
> RG <- backgroundCorrect(RG, method="normexp", offset=50)
```

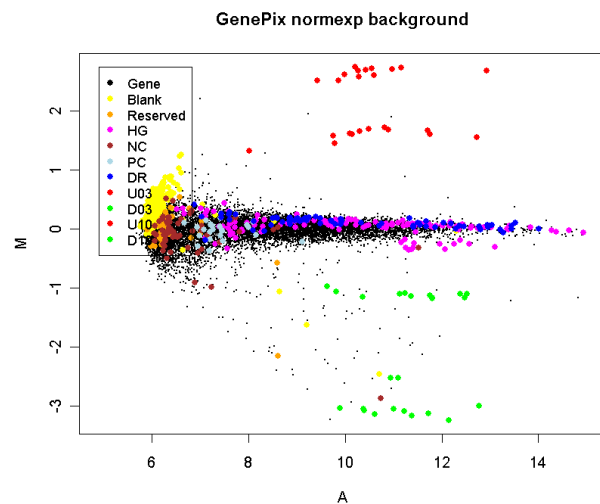
to be preferable to the simple background subtraction when using output from most image analysis programs. This method adjusts the foreground adaptively for the background intensities and results in strictly positive adjusted intensities, i.e., negative or zero corrected intensities are avoided. The use of an offset damps the variation of the log-ratios for very low intensities spots towards zero.

To illustrate some differences between the different background correction methods we consider one cDNA array which was self-self hybridized, i.e., the same RNA source was hybridized to both channels. For this array there is no actual differential expression. The array was printed with a human 10.5k library and hybridized with Jurkatt RNA on both channels. (Data courtesy Andrew Holloway and Dileepa Diyagama, Peter MacCallum Cancer Centre, Melbourne.) The array included a selection of control spots which are highlighted on the plots. Of particular interest are the spike-in ratio controls which should show up and down fold changes of 3 and 10. The first plot displays data acquired with GenePix software and background corrected by subtracting the median local background, which is the default with

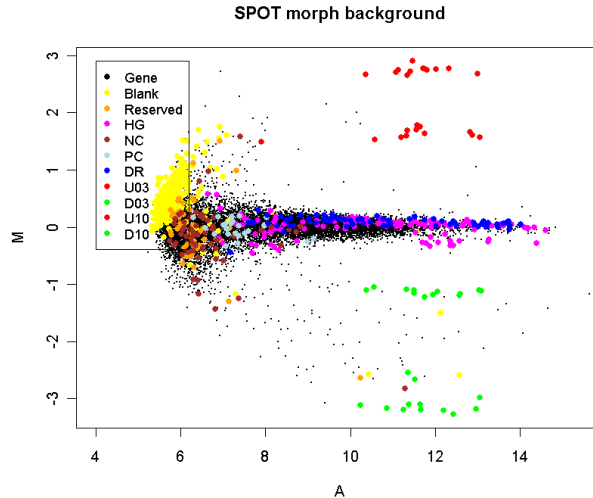
GenePix data. The plot shows the typical wedge shape with fanning of the M-values at low intensities. The range of observed M-values dominates the spike-in ratio controls. There are also 1148 spots not shown on the plot because the background corrected intensities were zero or negative.



The second plot shows the same array background corrected with `method="normexp"` and `offset=50`. The spike-in ratio controls now stand out clearly from the range of the M-values. All spots on the array are shown on the plot because there are now no missing M-values.



The third plot shows the same array quantified with SPOT software and with "morph" background subtracted. This background estimator produces a similar effect to that with `normexp`.



The effect of using “morph” background or using `method="normexp"` with an offset is to stabilize the variability of the M-values as a function of intensity. The empirical Bayes methods implemented in the `limma` package for assessing differential expression will yield most benefit when the variabilities are as homogeneous as possible between genes. This can best be achieved by reducing the dependence of variability on intensity as far as possible [23].

6.2 Within-Array Normalization

`Limma` implements a range of normalization methods for spotted microarrays. Smyth and Speed [28] describe some of the most commonly used methods. The methods may be broadly classified into methods which normalize the M-values for each array separately (within-array normalization) and methods which normalize intensities or log-ratios to be comparable across arrays (between-array normalization). This section discusses mainly within-array normalization, which all that is usually required for the traditional log-ratio analysis of two-color data. Between-array normalization is discussed further in Section 6.3.

Print-tip loess normalization [39] is the default normalization method and can be performed by

```
> MA <- normalizeWithinArrays(RG)
```

There are some notable cases where this is not appropriate. For example, Agilent arrays do not have print-tip groups, so one should use global loess normalization instead:

```
> MA <- normalizeWithinArrays(RG, method="loess")
```

Print-tip loess is also unreliable for small arrays with less than, say, 150 spots per print-tip group. Even larger arrays may have particular print-tip groups which are too small for print-tip loess normalization if the number of spots with non-missing M-values is small for one or more of the print-tip groups. In these cases one should either use global “loess” normalization or else use robust spline normalization

```
> MA <- normalizeWithinArrays(RG, method="robustspline")
```

which is an empirical Bayes compromise between print-tip and global loess normalization, with 5-parameter regression splines used in place of the loess curves.

Loess normalization assumes that the bulk of the probes on the array are not differentially expressed. It doesn't assume that there are equal numbers of up and down regulated genes or that differential expression is symmetric about zero, provided that the loess fit is implemented in a robust fashion, but it is necessary that there be a substantial body of probes which do not change expression levels. Oshlack et al [18] show that loess normalization can tolerate up to about 30% asymmetric differential expression while still giving good results. This assumption can be suspect for boutique arrays where the total number of unique genes on the array is small, say less than 150, particularly if these genes have been selected for being specifically expressed in one of the RNA sources. In such a situation, the best strategy is to include on the arrays a series of non-differentially expressed control spots, such as a titration series of whole-library-pool spots, and to use the up-weighting method discussed below [18]. A whole-library-pool means that one makes a pool of a library of probes, and prints spots from the pool at various concentrations [38]. The library should be sufficiently large than one can be confident that the average of all the probes is not differentially expressed. The larger the library the better. Good results have been obtained with library pools with as few as 500 clones. In the absence of such control spots, normalization of boutique arrays requires specialist advice.

Any spot quality weights found in `RG` will be used in the normalization by default. This means for example that spots with zero weight (flagged out) will not influence the normalization of other spots. The use of spot quality weights will not however result in any spots being removed from the data object. Even spots with zero weight will be normalized and will appear in the output object, such spots will simply not have any influence on the other spots. If you do not wish the spot quality weights to be used in the normalization, their use can be over-ridden using

```
> MA <- normalizeWithinArrays(RG, weights=NULL)
```

The output object `MA` will still contain any spot quality weights found in `RG`, but these weights are not used in the normalization step.

It is often useful to make use of control spots to assist the normalization process. For example, if the arrays contain a series of spots which are known in advance to be non-differentially expressed, these spots can be given more weight in the normalization process. Spots which are known in advance to be differentially expressed can be down-weighted. Suppose for example that the `controlStatus()` has been used to identify spike-in spots which are differentially expressed and a titration series of whole-library-pool spots which should not be differentially expressed. Then one might use

```
> w <- modifyWeights(RG$weights, RG$genes$Status, c("spikein","titration"), c(0,2))
> MA <- normalizeWithinArrays(RG, weights=w)
```

to give zero weight to the spike-in spots and double weight to the titration spots. This process is automated by the "control" normalization method, for example

```
> csi <- RG$genes$Status=="titration"
> MA <- normalizeWithinArrays(RG, method="control", controlspots=csi)
```

In general, `csi` is an index vector specifying the non-differentially expressed control spots [18].

The idea of up-weighting the titration spots is in the same spirit as the composite normalization method proposed by [38] but is more flexible and generally applicable. The above code assumes that `RG` already contains spot quality weights. If not, one could use

```
> w <- modifyWeights(array(1,dim(RG)), RG$genes$Status, c("spikein","titration"), c(0,2))
> MA <- normalizeWithinArrays(RG, weights=w)
```

instead.

Limma contains some more sophisticated normalization methods. In particular, some between-array normalization methods are discussed in Section 6.3 of this guide.

6.3 Between-Array Normalization

This section explores some of the methods available for between-array normalization of two-color arrays. A feature which distinguishes most of these methods from within-array normalization is the focus on the individual red and green intensity values rather than merely on the log-ratios. These methods might therefore be called *individual channel* or *separate channel* normalization methods. Individual channel normalization is typically a prerequisite to individual channel analysis methods such as that provided by `lmscFit()`. Further discussion of the issues involved is given by [41]. This section shows how to reproduce some of the results given in [41]. The ApoAI data set from Section 11.2 will be used to illustrate these methods. We assume that the the ApoAI data has been loaded and background corrected as follows:

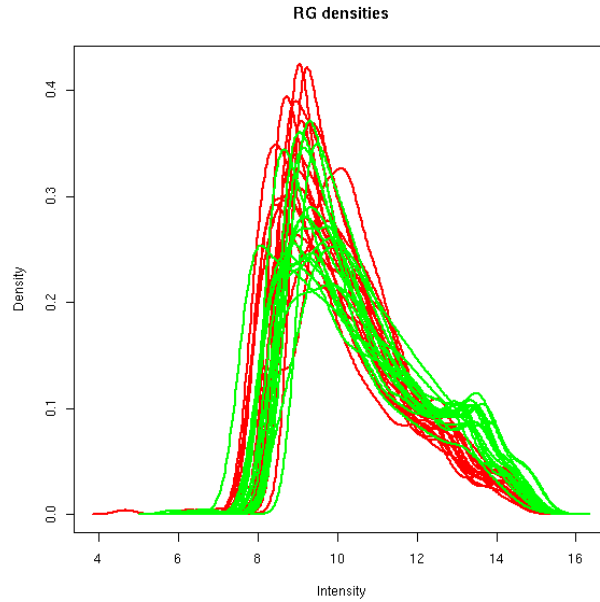
```
> load("ApoAI.RData")
```

An important issue to consider before normalizing between arrays is how background correction has been handled. For between-array normalization to be effective, it is important to avoid missing values in log-ratios which might arise from negative or zero corrected intensities. The function `backgroundCorrect()` gives a number of useful options. For the purposes of this section, the data has been corrected using the "minimum" method:

```
> RG.b <- backgroundCorrect(RG,method="minimum")
```

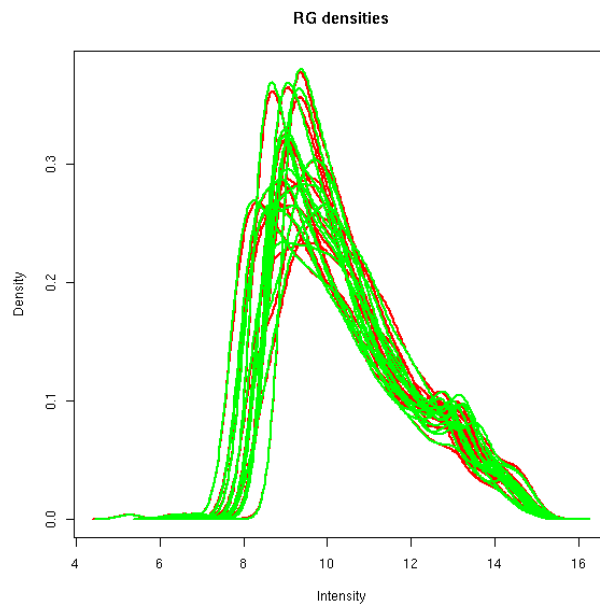
`plotDensities` displays smoothed empirical densities for the individual green and red channels on all the arrays. Without any normalization there is considerable variation between both channels and between arrays:

```
> plotDensities(RG.b)
```



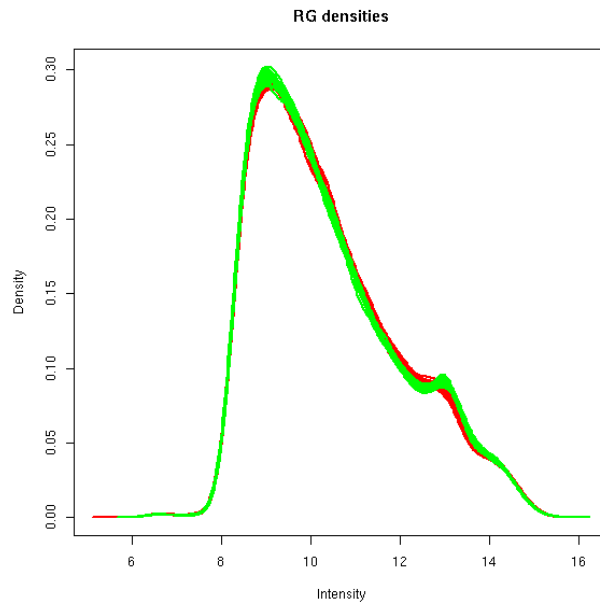
After loess normalization of the M-values for each array the red and green distributions become essentially the same for each array, although there is still considerable variation between arrays:

```
> MA.p <-normalizeWithinArrays(RG.b)
> plotDensities(MA.p)
```



Loess normalization doesn't affect the A-values. Applying quantile normalization to the A-values makes the distributions essentially the same across arrays as well as channels:

```
> MA.pAq <- normalizeBetweenArrays(MA.p, method="Aquantile")
> plotDensities(MA.pAq)
```

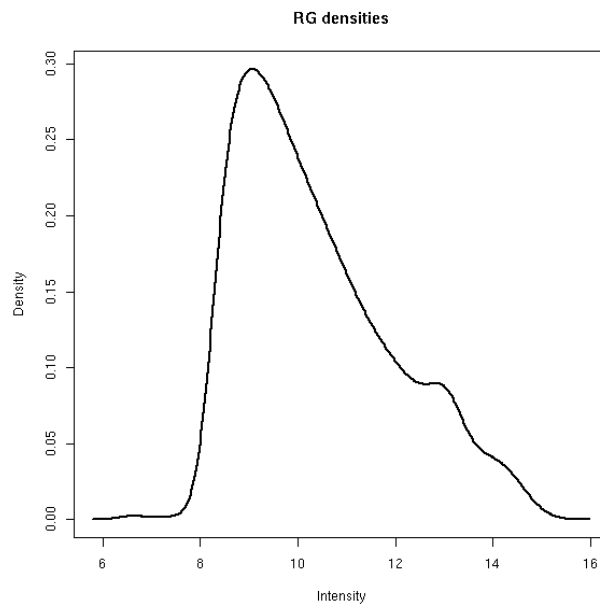


Applying quantile normalization directly to the individual red and green intensities produces a similar result but is somewhat noisier:

```
> MA.q <- normalizeBetweenArrays(RG.b, method="quantile")
> plotDensities(MA.q, col="black")
```

Warning message:

```
number of groups=2 not equal to number of col in: plotDensities(MA.q, col = "black")
```



There are other between-array normalization methods not explored here. For example `normalizeBetweenArrays` with `method="vsn"` gives an interface to the variance-stabilizing normalization methods of the `vsn` package.

6.4 Using Objects from the `marray` Package

The package `marray` is a well known R package for pre-processing of two-color microarray data. `Marray` provides functions for reading, normalization and graphical display of data. `Marray` and `limma` are both descendants of the earlier and path-breaking `sma` package available from <http://www.stat.berkeley.edu/users/terry/zarray/Software/smacode.html> but `limma` has maintained and built upon the original data structures whereas `marray` has converted to a fully formal data class representation. For this reason, `Limma` is backwardly compatible with `sma` while `marray` is not.

Normalization functions in `marray` focus on a flexible approach to location and scale normalization of M-values, rather than the within and between-array approach of `limma`. `Marray` provides some normalization methods which are not in `limma` including 2-D loess normalization and print-tip-scale normalization. Although there is some overlap between the normalization functions in the two packages, both providing print-tip loess normalization, the two approaches are largely complementary. `Marray` also provides highly developed functions for graphical display of two-color microarray data.

Read functions in `marray` produce objects of class `marrayRaw` while normalization produces objects of class `marrayNorm`. Objects of these classes may be converted to and from `limma` data objects using the `convert` package. `marrayRaw` objects may be converted to `RGList` objects and `marrayNorm` objects to `MAList` objects using the `as` function. For example, if `Data` is an `marrayNorm` object then

```
> library(convert)
> MA <- as(Data, "MAList")
```

converts to an `MAList` object.

`marrayNorm` objects can also be used directly in `limma` without conversion, and this is generally recommended. If `Data` is an `marrayNorm` object, then

```
> fit <- lmFit(Data, design)
```

fits a linear model to `Data` as it would to an `MAList` object. One difference however is that the `marray` read functions tend to populate the `maW` slot of the `marrayNorm` object with qualitative spot quality flags rather than with quantitative non-negative weights, as expected by `limma`. If this is so then one may need

```
> fit <- lmFit(Data, design, weights=NULL)
```

to turn off use of the spot quality weights.

Chapter 7

Linear Models Overview

7.1 Introduction

The package `limma` uses an approach called *linear models* to analyze designed microarray experiments. This approach allows very general experiments to be analyzed just as easily as a simple replicated experiment. The approach is outlined in [30, 40]. The approach requires one or two matrices to be specified. The first is the *design matrix* which indicates in effect which RNA samples have been applied to each array. The second is the *contrast matrix* which specifies which comparisons you would like to make between the RNA samples. For very simple experiments, you may not need to specify the contrast matrix.

The philosophy of the approach is as follows. You have to start by fitting a linear model to your data which fully models the systematic part of your data. The model is specified by the design matrix. Each row of the design matrix corresponds to an array in your experiment and each column corresponds to a coefficient which is used to describe the RNA sources in your experiment. With Affymetrix or single-channel data, or with two-color with a common reference, you will need as many coefficients as you have distinct RNA sources, no more and no less. With direct-design two-color data you will need one fewer coefficient than you have distinct RNA sources, unless you wish to estimate a dye-effect for each gene, in which case the number of RNA sources and the number of coefficients will be the same. Any set of independent coefficients will do, providing they describe all your treatments. The main purpose of this step is to estimate the variability in the data, hence the systematic part needs to be modelled so it can be distinguished from random variation.

In practice the requirement to have exactly as many coefficients as RNA sources is too restrictive in terms of questions you might want to answer. You might be interested in more or fewer comparisons between the RNA source. Hence the contrasts step is provided so that you can take the initial coefficients and compare them in as many ways as you want to answer any questions you might have, regardless of how many or how few these might be.

If you have data from Affymetrix experiments, from single-channel spotted microarrays or from spotted microarrays using a common reference, then linear modeling is the same as ordinary analysis of variance or multiple regression except that a model is fitted for every gene. With data of this type you can create design matrices as one would do for ordinary

modeling with univariate data. If you have data from spotted microarrays using a direct design, i.e., a connected design with no common reference, then the linear modeling approach is very powerful but the creation of the design matrix may require more statistical knowledge.

For statistical analysis and assessing differential expression, `limma` uses an empirical Bayes method to moderate the standard errors of the estimated log-fold changes. This results in more stable inference and improved power, especially for experiments with small numbers of arrays [30]. For arrays with within-array replicate spots, `limma` uses a pooled correlation method to make full use of the duplicate spots [27].

7.2 Affymetrix and Other Single-Channel Designs

Affymetrix data will usually be normalized using the `affy` package. We will assume here that the data is available as an `ExpressionSet` object called `eset`. Such an object will have an slot containing the log-expression values for each gene on each array which can be extracted using `exprs(eset)`. Affymetrix and other single-channel microarray data may be analyzed very much like ordinary linear models or anova models. The difference with microarray data is that it is almost always necessary to extract particular contrasts of interest and so the standard parametrizations provided for factors in R are not usually adequate.

There are many ways to approach the analysis of a complex experiment in `limma`. A straightforward strategy is to set up the simplest possible design matrix and then to extract from the fit the contrasts of interest.

Suppose that there are three RNA sources to be compared. Suppose that the first three arrays are hybridized with RNA1, the next two with RNA2 and the next three with RNA3. Suppose that all pair-wise comparisons between the RNA sources are of interest. We assume that the data has been normalized and stored in an `ExpressionSet` object, for example by

```
> data <- ReadAffy()
> eset <- rma(data)
```

An appropriate design matrix can be created and a linear model fitted using

```
> design <- model.matrix(~ 0+factor(c(1,1,1,2,2,3,3,3)))
> colnames(design) <- c("group1", "group2", "group3")
> fit <- lmFit(eset, design)
```

To make all pair-wise comparisons between the three groups the appropriate contrast matrix can be created by

```
> contrast.matrix <- makeContrasts(group2-group1, group3-group2, group3-group1, levels=design)
> fit2 <- contrasts.fit(fit, contrast.matrix)
> fit2 <- eBayes(fit2)
```

A list of top genes differential expressed in group2 versus group1 can be obtained from

```
> topTable(fit2, coef=1, adjust="BH")
```

The outcome of each hypothesis test can be assigned using


```
> results <- decideTests(fit2)
```

A Venn diagram showing numbers of genes significant in each comparison can be obtained from

```
> vennDiagram(results)
```

7.3 Common Reference Designs

Now consider two-color microarray experiments in which a common reference has been used on all the arrays. Such experiments can be analyzed very similarly to Affymetrix experiments except that allowance must be made for dye-swaps. The simplest method is to setup the design matrix using the `modelMatrix()` function and the `targets` file. As an example, we consider part of an experiment conducted by Joëlle Michaud, Catherine Carmichael and Dr Hamish Scott at the Walter and Eliza Hall Institute to compare the effects of transcription factors in a human cell line. The `targets` file is as follows:

```
> targets <- readTargets("runxtargets.txt")
> targets
  SlideNumber      Cy3      Cy5
1          2144    EGFP    AML1
2          2145    EGFP    AML1
3          2146    AML1    EGFP
4          2147    EGFP AML1.CBFb
5          2148    EGFP AML1.CBFb
6          2149 AML1.CBFb    EGFP
7          2158    EGFP    CBFb
8          2159    CBFb    EGFP
9          2160    EGFP AML1.CBFb
10         2161 AML1.CBFb    EGFP
11         2162    EGFP AML1.CBFb
12         2163 AML1.CBFb    EGFP
13         2166    EGFP    CBFb
14         2167    CBFb    EGFP
```

In the experiment, green fluorescent protein (EGFP) has been used as a common reference. An adenovirus system was used to transport various transcription factors into the nuclei of HeLa cells. Here we consider the transcription factors AML1, CBFbeta or both. A simple design matrix was formed and a linear model fit:

```
> design <- modelMatrix(targets,ref="EGFP")
> design
  AML1 AML1.CBFb CBFb
1     1         0     0
2     1         0     0
3    -1         0     0
4     0         1     0
5     0         1     0
6     0        -1     0
```

```

7      0      0      1
8      0      0     -1
9      0      1      0
10     0     -1      0
11     0      1      0
12     0     -1      0
13     0      0      1
14     0      0     -1
> fit <- lmFit(MA, design)

```

It is of interest to compare each of the transcription factors to EGFP and also to compare the combination transcription factor with AML1 and CBFb individually. An appropriate contrast matrix was formed as follows:

```

> contrast.matrix <- makeContrasts(AML1,CBFb,AML1.CBFb,AML1.CBFb-AML1,AML1.CBFb-CBFb,
+   levels=design)
> contrast.matrix
      AML1 CBFb AML1.CBFb AML1.CBFb - AML1 AML1.CBFb - CBFb
AML1      1  0      0      -1      0
AML1.CBFb 0  0      1      1      1
CBFb      0  1      0      0     -1

```

The linear model fit can now be expanded and empirical Bayes statistics computed:

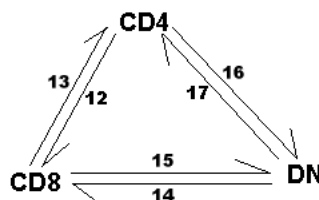
```

> fit2 <- contrasts.fit(fit, contrast.matrix)
> fit2 <- eBayes(fit2)

```

7.4 Direct Two-Color Designs

Two-color designs without a common reference require the most statistical knowledge to choose the appropriate design matrix. A direct design is one in which there is no single RNA source which is hybridized to every array. As an example, we consider an experiment conducted by Dr Mireille Lahoud at the Walter and Eliza Hall Institute to compare gene expression in three different populations of dendritic cells (DC).



Arrow heads represent Cy5, i.e. arrows point in the Cy3 to Cy5 direction.

This experiment involved six cDNA microarrays in three dye-swap pairs, with each pair used to compare two DC types. The design is shown diagrammatically above. The targets file was as follows:

```

> targets
      SlideNumber   FileName Cy3 Cy5
ml12med          12 ml12med.spot CD4 CD8
ml13med          13 ml13med.spot CD8 CD4
ml14med          14 ml14med.spot  DN CD8
ml15med          15 ml15med.spot CD8  DN
ml16med          16 ml16med.spot CD4  DN
ml17med          17 ml17med.spot  DN CD4

```

There are many valid choices for a design matrix for such an experiment and no single correct choice. We chose to setup the design matrix as follows:

```

> design <- modelMatrix(targets, ref="CD4")
Found unique target names:
  CD4 CD8 DN
> design
      CD8 DN
ml12med  1  0
ml13med -1  0
ml14med  1 -1
ml15med -1  1
ml16med  0  1
ml17med  0 -1

```

In this design matrix, the CD8 and DN populations have been compared back to the CD4 population. The coefficients estimated by the linear model will correspond to the log-ratios of CD8 vs CD4 (first column) and DN vs CD4 (second column).

After appropriate normalization of the expression data, a linear model was fit using

```

> fit <- lmFit(MA, design)

```

The linear model can now be interrogated to answer any questions of interest. For this experiment it was of interest to make all pairwise comparisons between the three DC populations. This was accomplished using the contrast matrix

```

> contrast.matrix <- cbind("CD8-CD4"=c(1,0),"DN-CD4"=c(0,1),"CD8-DN"=c(1,-1))
> rownames(contrast.matrix) <- colnames(design)
> contrast.matrix
      CD8-CD4 DN-CD4 CD8-DN
CD8          1     0     1
DN           0     1    -1

```

The contrast matrix can be used to expand the linear model fit and then to compute empirical Bayes statistics:

```

> fit2 <- contrasts.fit(fit, contrast.matrix)
> fit2 <- eBayes(fit2)

```

Chapter 8

Specific Designs

8.1 Simple Comparisons

8.1.1 Replicate Arrays

The simplest possible microarray experiment is one with a series of replicate two-color arrays all comparing the same two RNA sources. For a three-array experiment comparing wild type (wt) and mutant (mu) RNA, the targets file might contain the following entries:

FileName	Cy3	Cy5
File1	wt	mu
File2	wt	mu
File3	wt	mu

A list of differentially expressed genes might be found for this experiment by

```
> fit <- lmFit(MA)
> fit <- eBayes(fit)
> topTable(fit)
```

where `MA` holds the normalized data. The default design matrix used here is just a single column of ones. The experiment here measures the fold change of mutant over wild type. Genes which have positive M-values are more highly expressed in the mutant RNA while genes with negative M-values are more highly expressed in the wild type. The analysis is analogous to the classical single-sample *t*-test except that we have used empirical Bayes methods to borrow information between genes.

8.1.2 Dye Swaps

A simple modification of the above experiment would be to swap the dyes for one of the arrays. The targets file might now be

FileName	Cy3	Cy5
File1	wt	mu
File2	mu	wt
File3	wt	mu

Now the analysis would be

```
> design <- c(1,-1,1)
> fit <- lmFit(MA, design)
> fit <- eBayes(fit)
> topTable(fit)
```

Alternatively the design matrix could be set, replacing the first of the above code lines, by

```
> design <- modelMatrix(targets, ref="wt")
```

where `targets` is the data frame holding the targets file information.

If there are at least two arrays with each dye-orientation, then it is possible to estimate and adjust for any probe-specific dye effects. The dye-effect is estimated by an intercept term. If the experiment was

FileName	Cy3	Cy5
File1	wt	mu
File2	mu	wt
File3	wt	mu
File4	mu	wt

then we could set

```
> design <- cbind(DyeEffect=1,MUvsWT=c(1,-1,1,-1))
> fit <- lmFit(MA, design)
> fit <- eBayes(fit)
```

The genes which show dye effects can be seen by

```
> topTable(fit, coef="DyeEffect")
```

The genes which are differentially expressed in the mutant are obtained by

```
> topTable(fit, coef="MUvsWT")
```

The fold changes and significant tests in this list are corrected for dye-effects. Including the dye-effect in the model in this way uses up one degree of freedom which might otherwise be used to estimate the residual variability, but it is valuable if many genes show non-negligible dye-effects.

8.2 Technical Replication

In the previous sections we have assumed that all arrays are biological replicates. Now consider an experiment in which two wild-type and two mice from the same mutant strain are compared using two arrays for each pair of mice. The targets might be

FileName	Cy3	Cy5
File1	wt1	mu1
File2	wt1	mu1
File3	wt2	mu2
File4	wt2	mu2

The first and second and third and fourth arrays are *technical replicates*. It would not be correct to treat this experiment as comprising four replicate arrays because the technical replicate pairs are not independent, in fact they are likely to be positively correlated.

One way to analyze these data is the following:

```
> biolrep <- c(1, 1, 2, 2)
> corfit <- duplicateCorrelation(MA, ndups = 1, block = biolrep)
> fit <- lmFit(MA, block = biolrep, cor = corfit$consensus)
> fit <- eBayes(fit)
> topTable(fit, adjust = "BH")
```

The vector `biolrep` indicates the two blocks corresponding to biological replicates. The value `corfit$consensus` estimates the average correlation within the blocks and should be positive. This analysis is analogous to *mixed model* analysis of variance [17, Chapter 18] except that information has been borrowed between genes. Information is borrowed by constraining the within-block correlations to be equal between genes and by using empirical Bayes methods to moderate the standard deviations between genes [27].

If the technical replicates were in dye-swap pairs as

FileName	Cy3	Cy5
File1	wt1	mu1
File2	mu1	wt1
File3	wt2	mu2
File4	mu2	wt2

then one might use

```
> design <- c(1, -1, 1, -1)
> corfit <- duplicateCorrelation(MA, design, ndups = 1, block = biolrep)
> fit <- lmFit(MA, design, block = biolrep, cor = corfit$consensus)
> fit <- eBayes(fit)
> topTable(fit, adjust = "BH")
```

In this case the correlation `corfit$consensus` should be negative because the technical replicates are dye-swaps and should vary in opposite directions.

This method of handling technical replication using `duplicateCorrelation()` is somewhat limited. If for example one technical replicate was dye-swapped and the other not,

FileName	Cy3	Cy5
File1	wt1	mu1
File2	mu1	wt1
File3	wt2	mu2
File4	wt2	mu2

then there is no way to use `duplicateCorrelation()` because the technical replicate correlation will be negative for the first pair but positive for the second. An alternative strategy is to include a coefficient in the design matrix for each of the two biological blocks. This could be accomplished by defining

```
> design <- cbind(MU1vsWT1 = c(1,-1,0,0), MU2vsWT2 = c(0,0,1,1))
> fit <- lmFit(MA, design)
```

This will fit a linear model with two coefficients, one estimating the mutant vs wild-type comparison for the first pair of mice and the other for the second pair of mice. What we want is the average of the two mutant vs wild-type comparisons, and this is extracted by the contrast $(MU1vsWT1+MU2vsWT2)/2$:

```
> cont.matrix <- makeContrasts(MUvsWT = (MU1vsWT1 + MU2vsWT2)/2,
+                             levels = design)
> fit2 <- contrasts.fit(fit, cont.matrix)
> fit2 <- eBayes(fit2)
> topTable(fit2, adjust = "BH")
```

The technique of including an effect for each biological replicate is well suited to situations with a lot of technical replication. Here is a larger example from a real experiment. Three mutant mice are to be compared with three wild-type mice. Eighteen two-color arrays were used with each mouse appearing on six different arrays:

```
> targets

      FileName Cy3 Cy5
1391 1391.spot wt1 mu1
1392 1392.spot mu1 wt1
1340 1340.spot wt2 mu1
1341 1341.spot mu1 wt2
1395 1395.spot wt3 mu1
1396 1396.spot mu1 wt3
1393 1393.spot wt1 mu2
1394 1394.spot mu2 wt1
1371 1371.spot wt2 mu2
1372 1372.spot mu2 wt2
1338 1338.spot wt3 mu2
1339 1339.spot mu2 wt3
1387 1387.spot wt1 mu3
1388 1388.spot mu3 wt1
1399 1399.spot wt2 mu3
1390 1390.spot mu3 wt2
1397 1397.spot wt3 mu3
1398 1398.spot mu3 wt3
```

The comparison of interest is the average difference between the mutant and wild-type mice. `duplicateCorrelation()` could not be used here because the arrays do not group neatly into biological replicate groups. In any case, with six arrays on each mouse it is much safer and more conservative to fit an effect for each mouse. We could proceed as

```
> design <- modelMatrix(targets, ref = "wt1")
> design <- cbind(Dye = 1, design)
> colnames(design)
```

```
[1] "Dye" "mu1" "mu2" "mu3" "wt2" "wt3"
```

The above code treats the first wild-type mouse as a baseline reference so that columns of the design matrix represent the difference between each of the other mice and wt1. The design matrix also includes an intercept term which represents the dye effect of Cy5 over Cy3 for each gene. If no dye effect is expected then the second line of code can be omitted.

```
> fit <- lmFit(MA, design)
> cont.matrix <- makeContrasts(muvswt = (mu1+mu2+mu3-wt2-wt3)/3,
+                               levels = design)
> fit2 <- contrasts.fit(fit, cont.matrix)
> fit2 <- eBayes(fit2)
> topTable(fit2, adjust = "BH")
```

The contrast defined by the function `makeContrasts` represents the average difference between the mutant and wild-type mice, which is the comparison of interest.

This general approach is applicable to many studies involving biological replicates. Here is another example based on a real example conducted by the Scott Lab at the Walter and Eliza Hall Institute (WEHI). RNA is collected from four human subjects from the same family, two affected by a leukemia-inducing mutation and two unaffected. Each of the two affected subjects (A1 and A2) is compared with each of the two unaffected subjects (U1 and U2):

FileName	Cy3	Cy5
File1	U1	A1
File2	A1	U2
File3	U2	A2
File4	A2	U1

Our interest is to find genes which are differentially expressed between the affected and unaffected subjects. Although all four arrays compare an affected with an unaffected subject, the arrays are not independent. We need to take account of the fact that RNA from each subject appears on two different arrays. We do this by fitting a model with a coefficient for each subject and then extracting the contrast between the affected and unaffected subjects:

```
> design <- modelMatrix(targets, ref = "U1")
> fit <- lmFit(MA, design)
> cont.matrix <- makeContrasts(AvsU = (A1+A2-U2)/2, levels = design)
> fit2 <- contrasts.fit(fit, cont.matrix)
> fit2 <- eBayes(fit2)
> topTable(fit2, adjust = "BH")
```


8.3 Paired Samples

Paired samples occur when we compare two treatments and each sample given one treatment is naturally paired with a particular sample given the other treatment. This is a special case of blocking with blocks of size two. The classical test associated with this situation is the paired t -test.

Suppose an experiment is conducted with Affymetrix or single-channel arrays to compare a new treatment (T) with a control (C). Six dogs are used from three sib-ships. For each sib-pair, one dog is given the treatment while the other dog is a control. This produces the targets frame:

FileName	SibShip	Treatment
File1	1	C
File2	1	T
File3	2	C
File4	2	T
File5	3	C
File6	3	T

A moderated paired t -test can be computed by allowing for sib-pair effects in the linear model:

```
> SibShip <- factor(targets$SibShip)
> Treat <- factor(targets$Treatment, levels=c("C","T"))
> design <- model.matrix(~SibShip+Treat)
> fit <- lmFit(eset, design)
> fit <- eBayes(fit)
> topTable(fit, coef="TreatT")
```

8.4 Two Groups: Common Reference

Suppose now that we wish to compare two wild type (Wt) mice with three mutant (Mu) mice using arrays hybridized with a common reference RNA (Ref):

FileName	Cy3	Cy5
File1	Ref	WT
File2	Ref	WT
File3	Ref	Mu
File4	Ref	Mu
File5	Ref	Mu

The interest here is in the comparison between the mutant and wild type mice. There are two major ways in which this comparison can be made. We can

1. create a design matrix which includes a coefficient for the mutant vs wild type difference, or

2. create a design matrix which includes separate coefficients for wild type and mutant mice and then extract the difference as a contrast.

For the first approach, the design matrix should be as follows

```
> design
```

```
      WTvsREF MUvsWT
Array1      1      0
Array2      1      0
Array3      1      1
Array4      1      1
Array5      1      1
```

Here the first coefficient estimates the difference between wild type and the reference for each probe while the second coefficient estimates the difference between mutant and wild type. For those not familiar with model matrices in linear regression, it can be understood in the following way. The matrix indicates which coefficients apply to each array. For the first two arrays the fitted values will be just the `WTvsREF` coefficient, which is correct. For the remaining arrays the fitted values will be `WTvsREF + MUvsWT`, which is equivalent to mutant vs reference, also correct. For reasons that will be apparent later, this is sometimes called the *treatment-contrasts* parametrization. Differentially expressed genes can be found by

```
> fit <- lmFit(MA, design)
> fit <- eBayes(fit)
> topTable(fit, coef="MUvsWT", adjust="BH")
```

There is no need here to use `contrasts.fit()` because the comparison of interest is already built into the fitted model. This analysis is analogous to the classical *pooled two-sample t-test* except that information has been borrowed between genes.

For the second approach, the design matrix should be

```
      WT MU
Array1  1  0
Array2  1  0
Array3  0  1
Array4  0  1
Array5  0  1
```

The first coefficient now represents wild-type vs the reference and the second represents mutant vs the reference. Our comparison of interest is the difference between these two coefficients. We will call this the *group-means* parametrization. Differentially expressed genes can be found by

```
> fit <- lmFit(MA, design)
> cont.matrix <- makeContrasts(MUvsWT=MU-WT, levels=design)
> fit2 <- contrasts.fit(fit, cont.matrix)
> fit2 <- eBayes(fit2)
> topTable(fit2, adjust="BH")
```

The results will be exactly the same as for the first approach.

The design matrix can be constructed

1. manually,
2. using the `limma` function `modelMatrix()`, or
3. using the built-in R function `model.matrix()`.

Let `Group` be the factor defined by

```
> Group <- factor(c("WT", "WT", "Mu", "Mu", "Mu"), levels=c("WT", "Mu"))
```

For the first approach, the treatment-contrasts parametrization, the design matrix can be computed by

```
> design <- cbind(WTvsRef=1, MUvsWT=c(0,0,1,1,1))
```

or by

```
> param <- cbind(WTvsRef=c(-1,1,0), MUvsWT=c(0,-1,1))
> rownames(param) <- c("Ref", "WT", "Mu")
> design <- modelMatrix(targets, parameters=param)
```

or by

```
> design <- model.matrix(~Group)
> colnames(design) <- c("WTvsRef", "MUvsWT")
```

all of which produce the same result. For the second approach, the group-means parametrization, the design matrix can be computed by

```
> design <- cbind(WT=c(1,1,0,0,0), MU=c(0,0,1,1,1))
```

or by

```
> param <- cbind(WT=c(-1,1,0), MU=c(-1,0,1))
> rownames(param) <- c("Ref", "WT", "Mu")
> design <- modelMatrix(targets, parameters=param)
```

or by

```
> design <- model.matrix(~0+Group)
> colnames(design) <- c("WT", "Mu")
```

all of which again produce the same result.

8.5 Two Groups: Affymetrix

Suppose now that we wish to compare two wild type (Wt) mice with three mutant (Mu) mice using Affymetrix arrays or any other single-channel array technology:

FileName	Target
File1	WT
File2	WT
File3	Mu
File4	Mu
File5	Mu

Everything is exactly as in the previous section, except that the function `modelMatrix()` would not be used. We can either

1. create a design matrix which includes a coefficient for the mutant vs wild type difference, or
2. create a design matrix which includes separate coefficients for wild type and mutant mice and then extract the difference as a contrast.

For the first approach, the treatment-contrasts parametrization, the design matrix should be as follows:

```
> design
      WT MUvsWT
Array1 1      0
Array2 1      0
Array3 1      1
Array4 1      1
Array5 1      1
```

Here the first coefficient estimates the mean log-expression for wild type mice and plays the role of an intercept. The second coefficient estimates the difference between mutant and wild type. Differentially expressed genes can be found by

```
> fit <- lmFit(eset, design)
> fit <- eBayes(fit)
> topTable(fit, coef="MUvsWT", adjust="BH")
```

where `eset` is an `ExpressionSet` or `matrix` object containing the log-expression values. For the second approach, the design matrix should be

```
      WT MU
Array1 1  0
Array2 1  0
Array3 0  1
Array4 0  1
Array5 0  1
```

Differentially expressed genes can be found by

```
> fit <- lmFit(eset, design)
> cont.matrix <- makeContrasts(MUvsWT=MU-WT, levels=design)
> fit2 <- contrasts.fit(fit, cont.matrix)
> fit2 <- eBayes(fit2)
> topTable(fit2, adjust="BH")
```

For the first approach, the treatment-contrasts parametrization, the design matrix can be computed by

```
> design <- cbind(WT=1,MUvsWT=c(0,0,1,1,1))
```

or by

```
> design <- model.matrix(~Group)
> colnames(design) <- c("WT","MUvsWT")
```

For the second approach, the group-means parametrization, the design matrix can be computed by

```
> design <- cbind(WT=c(1,1,0,0,0),MU=c(0,0,1,1,1))
```

or by

```
> design <- model.matrix(~0+Group)
> colnames(design) <- c("WT","MU")
```

8.6 Several Groups

The above approaches for two groups extend easily to any number of groups. Suppose that three RNA targets to be compared using AffymetrixTM arrays. Suppose that the three targets are called “RNA1”, “RNA2” and “RNA3” and that the column `targets$Target` indicates which one was hybridized to each array. An appropriate design matrix can be created using

```
> f <- factor(targets$Target, levels=c("RNA1","RNA2","RNA3"))
> design <- model.matrix(~0+f)
> colnames(design) <- c("RNA1","RNA2","RNA3")
```

To make all pair-wise comparisons between the three groups one could proceed

```
> fit <- lmFit(eset, design)
> contrast.matrix <- makeContrasts(RNA2-RNA1, RNA3-RNA2, RNA3-RNA1,
+                               levels=design)
> fit2 <- contrasts.fit(fit, contrast.matrix)
> fit2 <- eBayes(fit2)
```

A list of top genes for RNA2 versus RNA1 can be obtained from

```
> topTable(fit2, coef=1, adjust="BH")
```

The outcome of each hypothesis test can be assigned using

```
> results <- decideTests(fit2)
```

A Venn diagram showing numbers of genes significant in each comparison can be obtained from

```
> vennDiagram(results)
```

The statistic `fit2$F` and the corresponding `fit2$p.value` combine the three pair-wise comparisons into one F -test. This is equivalent to a one-way ANOVA for each gene except that the residual mean squares have been moderated between genes. To find genes which vary between the three RNA targets in any way, look for genes with small p -values. To find the top 30 genes:

```
> topTableF(fit2, number=30)
```

Now suppose that the experiment had been conducted using two-color arrays with a common reference instead of AffymetrixTM arrays. For example the targets frame might be

FileName	Cy3	Cy5
File1	Ref	RNA1
File2	RNA1	Ref
File3	Ref	RNA2
File4	RNA2	Ref
File5	Ref	RNA3

For this experiment the design matrix could be formed by

```
> design <- modelMatrix(targets, ref="Ref")
```

and everything else would be as for the AffymetrixTM experiment.

8.7 Factorial Designs

Factorial designs are those where more than one experimental dimension is being varied and each combination of treatment conditions is observed. Suppose that cells are extracted from wild type and mutant mice and these cells are either stimulated (S) or unstimulated (U). RNA from the treated cells is then extracted and hybridized to a microarray. We will assume for simplicity that the arrays are single-color arrays such as Affymetrix. Consider the following targets frame:

FileName	Strain	Treatment
File1	WT	U
File2	WT	S
File3	Mu	U
File4	Mu	S
File5	Mu	S

The two experimental dimensions or *factors* here are Strain and Treatment. Strain specifies the genotype of the mouse from which the cells are extracted and Treatment specifies whether the cells are stimulated or not. All four combinations of Strain and Treatment are observed, so this is a factorial design. It will be convenient for us to collect the Strain/Treatment combinations into one vector as follows:

```
> TS <- paste(targets$Strain, targets$Treatment, sep=".")
> TS

[1] "WT.U" "WT.S" "Mu.U" "Mu.S" "Mu.S"
```

It is especially important with a factorial design to decide what are the comparisons of interest. We will assume here that the experimenter is interested in

1. which genes respond to stimulation in wild-type cells,
2. which genes respond to stimulation in mutant cells, and
3. which genes respond differently in mutant compared to wild-type cells.

as these are the questions which are most usually relevant in a molecular biology context. The first of these questions relates to the WT.S vs WT.U comparison and the second to Mu.S vs Mu.U. The third relates to the difference of differences, i.e., $(\text{Mu.S} - \text{Mu.U}) - (\text{WT.S} - \text{WT.U})$, which is called the *interaction* term.

We describe first a simple way to analyze this experiment using limma commands in a similar way to that in which two-sample designs were analyzed. Then we will go on to describe the more classical statistical approaches using factorial model formulas. All the approaches considered are equivalent and yield identical bottom-line results. The most basic approach is to fit a model with a coefficient for each of the four factor combinations and then to extract the comparisons of interest as contrasts:

```
> TS <- factor(TS, levels=c("WT.U", "WT.S", "Mu.U", "Mu.S"))
> design <- model.matrix(~0+TS)
> colnames(design) <- levels(TS)
> fit <- lmFit(eset, design)
```

This fits a model with four coefficients corresponding to WT.U, WT.S, Mu.U and Mu.S respectively. Our three contrasts of interest can be extracted by

```
> cont.matrix <- makeContrasts(
+   WT.SvsU=WT.S-WT.U,
+   Mu.SvsU=Mu.S-Mu.U,
+   Diff=(Mu.S-Mu.U)-(WT.S-WT.U),
+   levels=design)
> fit2 <- contrasts.fit(fit, cont.matrix)
> fit2 <- eBayes(fit2)
```

We can use `topTable()` to look at lists of differentially expressed genes for each of three contrasts, or else

```
> results <- decideTests(fit2)
> vennDiagram(results)
```

to look at all three contrasts simultaneously.

The analysis of factorial designs has a long history in statistics and a system of factorial *model formulas* has been developed to facilitate the analysis of complex designs. It is important to understand though that the above three molecular biology questions do not correspond to any of the usual parametrizations used in statistics for factorial designs. Suppose for example that we proceed in the usual statistical way,

```
> Strain <- factor(targets$Strain, levels=c("WT","Mu"))
> Treatment <- factor(targets$Treatment, levels=c("U","S"))
> design <- model.matrix(~Strain*Treatment)
```

This creates a design matrix which defines four coefficients with the following interpretations:

Coefficient	Comparison	Interpretation
Intercept	WT.U	Baseline level of unstimulated WT
StrainMu	Mu.U-WT.U	Difference between unstimulated strains
TreatmentS	WT.S-WT.U	Stimulation effect for WT
StrainMu:TreatmentS	(Mu.S-Mu.U)-(WT.S-WT.U)	Interaction

This is called the *treatment-contrast* parametrization. Notice that one of our comparisons of interest, Mu.S-Mu.U, is not represented and instead the comparison Mu.U-WT.U, which might not be of direct interest, is included. We need to use contrasts to extract all the comparisons of interest:

```
> fit <- lmFit(eset, design)
> cont.matrix <- cbind(WT.SvsU=c(0,0,1,0),Mu.SvsU=c(0,0,1,1),Diff=c(0,0,0,1))
> fit2 <- contrasts.fit(fit, cont.matrix)
> fit2 <- eBayes(fit2)
```

This extracts the WT stimulation effect as the third coefficient and the interaction as the fourth coefficient. The mutant stimulation effect is extracted as the sum of the third and fourth coefficients of the original model. This analysis yields exactly the same results as the previous analysis.

An even more classical statistical approach to the factorial experiment would be to use the *sum to zero* parametrization. In R this is achieved by

```
> contrasts(Strain) <- contr.sum(2)
> contrasts(Treatment) <- contr.sum(2)
> design <- model.matrix(~Strain*Treatment)
```

This defines four coefficients with the following interpretations:

Coefficient	Comparison	Interpretation
Intercept	(WT.U+WT.S+Mu.U+Mu.S)/4	Grand mean
Strain1	(WT.U+WT.S-Mu.U-Mu.S)/4	Strain main effect
Treatment1	(WT.U-WT.S+Mu.U-Mu.S)/4	Treatment main effect
Strain1:Treatment1	(WT.U-WT.S-Mu.U+Mu.S)/4	Interaction

This parametrization has many appealing mathematical properties and is the classical parametrization used for factorial designs in much experimental design theory. However it defines only one coefficient which is directly of interest to us, namely the interaction. Our three contrasts of interest could be extracted using

```
> fit <- lmFit(eset, design)
> cont.matrix <- cbind(WT.SvsU=c(0,0,-2,-2),Mu.SvsU=c(0,0,-2,2),Diff=c(0,0,0,4))
> fit2 <- contrasts.fit(fit, cont.matrix)
> fit2 <- eBayes(fit2)
```

The results will be identical to those for the previous two approaches.

The three approaches described here for the 2×2 factorial problem are equivalent and differ only in the parametrization chosen for the linear model. The three fitted model objects `fit` will differ only in the `coefficients` and associated components. The residual standard deviations `fit$sigma`, residual degrees of freedom `fit$df.residual` and all components of `fit2` will be identical for the three approaches. Since the three approaches are equivalent, users are free to choose whichever one is most convenient or intuitive.

8.8 Time Course Experiments

Time course experiments are those in which RNA is extracted at several time points after the onset of some treatment or stimulation. Simple time course experiments are similar to experiments with several groups covered in Section 8.6. Here we consider a two-way experiment in which time course profiles are to be compared for two genotypes. Consider the targets frame

FileName	Target
File1	wt.0hr
File2	wt.0hr
File3	wt.6hr
File4	wt.24hr
File5	mu.0hr
File6	mu.0hr
File7	mu.6hr
File8	mu.24hr

The targets are RNA samples collected from wild-type and mutant animals at 0, 6 and 24 hour time points. This can be viewed as a factorial experiment but a simpler approach is to use the group-mean parametrization.

```
> lev <- c("wt.0hr","wt.6hr","wt.24hr","mu.0hr","mu.6hr","mu.24hr")
> f <- factor(targets$Target, levels=lev)
> design <- model.matrix(~0+f)
> colnames(design) <- lev
> fit <- lmFit(eset, design)
```

Which genes respond at either the 6 hour or 24 hour times in the wild-type? We can find these by extracting the contrasts between the wild-type times.

```

> cont.wt <- makeContrasts(
+   "wt.6hr-wt.0hr",
+   "wt.24hr-wt.6hr",
+ levels=design)
> fit2 <- contrasts.fit(fit, cont.wt)
> fit2 <- eBayes(fit2)
> topTableF(fit2, adjust="BH")

```

Any two contrasts between the three times would give the same result. The same gene list would be obtained had "wt.24hr-wt.0hr" been used in place of "wt.24hr-wt.6hr" for example.

Which genes respond (i.e., change over time) in the mutant?

```

> cont.mu <- makeContrasts(
+   "mu.6hr-mu.0hr",
+   "mu.24hr-mu.6hr",
+ levels=design)
> fit2 <- contrasts.fit(fit, cont.mu)
> fit2 <- eBayes(fit2)
> topTableF(fit2, adjust="BH")

```

Which genes respond *differently* over time in the mutant relative to the wild-type?

```

> cont.dif <- makeContrasts(
+   Dif6hr =(mu.6hr-mu.0hr)-(wt.6hr-wt.0hr),
+   Dif24hr=(mu.24hr-mu.6hr)-(wt.24hr-wt.6hr),
+ levels=design)
> fit2 <- contrasts.fit(fit, cont.dif)
> fit2 <- eBayes(fit2)
> topTableF(fit2, adjust="BH")

```

The method of analysis described in this section was used for a six-point time course experiment on histone deacetylase inhibitors [19].

Chapter 9

Separate Channel Analysis of Two-Color Data

Consider an experiment comparing young and old animals for both both wild-type and mutant genotypes.

FileName	Cy3	Cy5
File1	wt.young	wt.old
File2	wt.old	wt.young
File3	mu.young	mu.old
File4	mu.old	mu.young

Each of the arrays in this experiment makes a direct comparison between young and old RNA targets. There are no arrays which compare wild-type and mutant animals. This is an example of an *unconnected* design in that there are no arrays linking the wild-type and mutant targets. It is not possible to make comparisons between wild-type and mutant animals on the basis of log-ratios alone. So to do this it is necessary to analyze the red and green channels intensities separately, i.e., to analyze log-intensities instead of log-ratios. It is possible to do this using a mixed model representation which treats each spot as a randomized block [36, 26]. **Limma** implements mixed model methods for separate channel analysis which make use of shrinkage methods to ensure stable and reliable inference with small numbers of arrays [26]. **Limma** also provides between-array normalization to prepare for separate channel analysis, for example

```
> MA <- normalizeBetweenArrays(MA, method="Aquantile")
```

scales the intensities so that A -values have the same distribution across arrays.

The first step in the differential expression analysis is to convert the targets frame to be channel rather than array orientated.

```
> targets2 <- targetsA2C(targets)
> targets2
```

```
      channel.col FileName  Target
File1.1          1    File1 wt.young
```

```

File1.2      2   File1   wt.old
File2.1      1   File2   wt.old
File2.2      2   File2   wt.young
File3.1      1   File3   mu.young
File3.2      2   File3   mu.old
File4.1      1   File4   mu.old
File4.2      2   File4   mu.young

```

The following code produces a design matrix with eight rows and four columns:

```

> u <- unique(targets2$Target)
> f <- factor(targets2$Target, levels=u)
> design <- model.matrix(~0+f)
> colnames(design) <- u

```

Inference proceeds as for within-array replicate spots except that the correlation to be estimated is that between the two channels for the same spot rather than between replicate spots.

```

> corfit <- intraspotCorrelation(MA, design)
> fit <- lmscFit(MA, design, correlation=corfit$consensus)

```

Subsequent steps proceed as for log-ratio analyses. For example if we want to compare wild-type young to mutant young animals, we could extract this contrast by

```

> cont.matrix <- makeContrasts("mu.young-wt.young",levels=design)
> fit2 <- contrasts.fit(fit, cont.matrix)
> fit2 <- eBayes(fit2)
> topTable(fit2, adjust="BH")

```

Chapter 10

Statistics for Differential Expression

10.1 Summary Top-Tables

Limma provides functions `topTable()` and `decideTests()` which summarize the results of the linear model, perform hypothesis tests and adjust the p -values for multiple testing. Results include (log) fold changes, standard errors, t -statistics and p -values. The basic statistic used for significance analysis is the *moderated t -statistic*, which is computed for each probe and for each contrast. This has the same interpretation as an ordinary t -statistic except that the standard errors have been moderated across genes, i.e., shrunk towards a common value, using a simple Bayesian model. This has the effect of borrowing information from the ensemble of genes to aid with inference about each individual gene [30]. Moderated t -statistics lead to p -values in the same way that ordinary t -statistics do except that the degrees of freedom are increased, reflecting the greater reliability associated with the smoothed standard errors. The effectiveness of the moderated t approach has been demonstrated on test data sets for which the differential expression status of each probe is known [11].

A number of summary statistics are presented by `topTable()` for the top genes and the selected contrast. The M -value (**M**) is the value of the contrast. Usually this represents a \log_2 -fold change between two or more experimental conditions although sometimes it represents a \log_2 -expression level. The A -value (**A**) is the average \log_2 -expression level for that gene across all the arrays and channels in the experiment. Column **t** is the moderated t -statistic. Column **P.Value** is the associated p -value and **adj.P.Value** is the p -value adjusted for multiple testing. The most popular form of adjustment is "BH" which is Benjamini and Hochberg's method to control the false discovery rate [1]. The adjusted values are often called q -values if the intention is to control or estimate the false discovery rate. The meaning of "BH" q -values is as follows. If all genes with q -value below a threshold, say 0.05, are selected as differentially expressed, then the expected proportion of false discoveries in the selected group is controlled to be less than the threshold value, in this case 5%. This procedure is equivalent to the procedure of Benjamini and Hochberg although the original paper did not formulate the method in terms of adjusted p -values.

The B -statistic (**1ods** or **B**) is the log-odds that the gene is differentially expressed [30, Section 5]. Suppose for example that $B = 1.5$. The odds of differential expression is

$\exp(1.5)=4.48$, i.e., about four and a half to one. The probability that the gene is differentially expressed is $4.48/(1+4.48)=0.82$, i.e., the probability is about 82% that this gene is differentially expressed. A B -statistic of zero corresponds to a 50-50 chance that the gene is differentially expressed. The B -statistic is automatically adjusted for multiple testing by assuming that 1% of the genes, or some other percentage specified by the user in the call to `eBayes()`, are expected to be differentially expressed. The p -values and B -statistics will normally rank genes in the same order. In fact, if the data contains no missing values or quality weights, then the order will be precisely the same.

As with all model-based methods, the p -values depend on normality and other mathematical assumptions which are never exactly true for microarray data. It has been argued that the p -values are useful for ranking genes even in the presence of large deviations from the assumptions [29, 27]. Benjamini and Hochberg's control of the false discovery rate assumes independence between genes, although Reiner et al [20] have argued that it works for many forms of dependence as well. The B -statistic probabilities depend on the same assumptions but require in addition a prior guess for the proportion of differentially expressed genes. The p -values may be preferred to the B -statistics because they do not require this prior knowledge.

The `eBayes()` function computes one more useful statistic. The moderated F -statistic (`F`) combines the t -statistics for all the contrasts into an overall test of significance for that gene.

The F -statistic tests whether any of the contrasts are non-zero for that gene, i.e., whether that gene is differentially expressed on any contrast. The denominator degrees of freedom is the same as that of the moderated- t . Its p -value is stored as `fit$F.p.value`. It is similar to the ordinary F -statistic from analysis of variance except that the denominator mean squares are moderated across genes.

A frequently asked question relates to the occasional occurrence that all of the adjusted p -values are equal to 1. This is not an error situation but rather an indication that there is no evidence of differential expression in the data after adjusting for multiple testing. This can occur even though many of the raw p -values may seem highly significant when taken as individual values. This situation typically occurs when none of the raw p -values are less than $1/G$, where G is the number of probes included in the fit. In that case the adjusted p -values are typically equal to 1 using any of the adjustment methods except for `adjust="none"`.

10.2 Fitted Model Objects

The output from `lmFit()` is an object of class `MArrayLM`. This section gives some mathematical details describing what is contained in such objects. This section can be skipped by readers not interested in such details.

The linear model for gene j has residual variance σ_j^2 with sample value s_j^2 and degrees of freedom d_j . The output from `lmFit()`, `fit` say, holds the s_j in component `fit$sigma` and the d_j in `fit$df.residual`. The covariance matrix of the estimated $\hat{\beta}_j$ is $\sigma_j^2 C^T (X^T V_j X)^{-1} C$ where V_j is a weight matrix determined by prior weights, any covariance terms introduced by correlation structure and any iterative weights introduced by robust estimation. The square-roots of the diagonal elements of $C^T (X^T V_j X)^{-1} C$ are called unscaled standard deviations and

are stored in `fit$stdev.unscaled`. The ordinary t -statistic for the k th contrast for gene j is $t_{jk} = \hat{\beta}_{jk}/(u_{jk}s_j)$ where u_{jk} is the unscaled standard deviation. The ordinary t -statistics can be recovered by

```
> tstat.ord <- fit$coef/fit$stdev.unscaled/fit$sigma
```

after fitting a linear model if desired.

The empirical Bayes method assumes an inverse Chisquare prior for the σ_j^2 with mean s_0^2 and degrees of freedom d_0 . The posterior values for the residual variances are given by

$$\tilde{s}_j^2 = \frac{d_0 s_0^2 + d_j s_j^2}{d_0 + d_j}$$

where d_j is the residual degrees of freedom for the j th gene. The output from `eBayes()` contains s_0^2 and d_0 as `fit$s2.prior` and `fit$df.prior` and the \tilde{s}_j^2 as `fit$s2.post`. The moderated t -statistic is

$$\tilde{t}_{jk} = \frac{\hat{\beta}_{jk}}{u_{jk}\tilde{s}_j}$$

This can be shown to follow a t -distribution on $d_0 + d_j$ degrees of freedom if $\beta_{jk} = 0$ [30]. The extra degrees of freedom f_0 represent the extra information which is borrowed from the ensemble of genes for inference about each individual gene. The output from `eBayes()` contains the \tilde{t}_{jk} as `fit$t` with corresponding p -values in `fit$p.value`.

10.3 Multiple Testing Across Contrasts

The output from `topTable` includes adjusted p -values, i.e., it performs multiple testing for the contrast being considered. If several contrasts are being tested simultaneously, then the issue arises of multiple testing for the entire set of hypotheses being considered, across contrasts as well as probes. The function `decideTests()` offers a number of strategies for doing this.

The simplest multiple testing method is `method="separate"`. This method does multiple testing for each contrast separately. This method is the default because it is equivalent to using `topTable()`. Using this method, testing a set of contrasts together will give the same results as when each contrast is tested on its own. The great advantage of this method is that it gives the same results regardless of which set of contrasts are tested together. The disadvantage of this method is that it does not do any multiple testing adjustment between contrasts. Another disadvantage is that the raw p -value cutoff corresponding to significance can be very different for different contrasts, depending on the number of DE probes. This method is recommended when different contrasts are being analysed to answer more or less independent questions.

`method="global"` is recommended when a set of closely related contrasts are being tested. This method simply appends all the tests together into one long vector of tests, i.e., it treats all the tests as equivalent regardless of which probe or contrast they relate to. An advantage is that the raw p -value cutoff is consistent across all contrasts. For this reason, `method="global"` is recommended if you want to compare the number of DE genes found for different contrasts,

for example interpreting the number of DE genes as representing the strength of the contrast. However users need to be aware that the number of DE genes for any particular contrasts will depend on which other contrasts are tested at the same time. Hence one should include only those contrasts which are closely related to the question at hand. Unnecessary contrasts should be excluded as these would affect the results for the contrasts of interest. Another more theoretical issue is that there is no theorem which proves that `adjust.method="BH"` in combination with `method="global"` will correctly control the false discovery rate for combinations of negatively correlated contrasts, however simulations, experience and some theory suggest that the method is safe in practice.

The `"hierarchical"` method offers power advantages when used with `adjust.method="holm"` to control the family-wise error rate. However its properties are not yet well understood with `adjust="BH"`.

`method="nestedF"` has a more specialised aim to give greater weight to probes which are significant for two or more contrasts. Most multiple testing methods tend to underestimate the number of such probes. There is some practical experience to suggest that `method="nestedF"` gives less conservative results when finding probes which respond to several different contrasts at once. However this method should still be viewed as experimental. It provides formal false discovery rate control at the probe level only, not at the contrast level.

10.4 Array Quality Weights

Given an appropriate design matrix, the relative reliability of each array in an experiment can be estimated by measuring how well the expression values for that array follow the linear model. This empirical approach of assessing array quality can be applied to both two-color and single-channel microarray data and is described in [22].

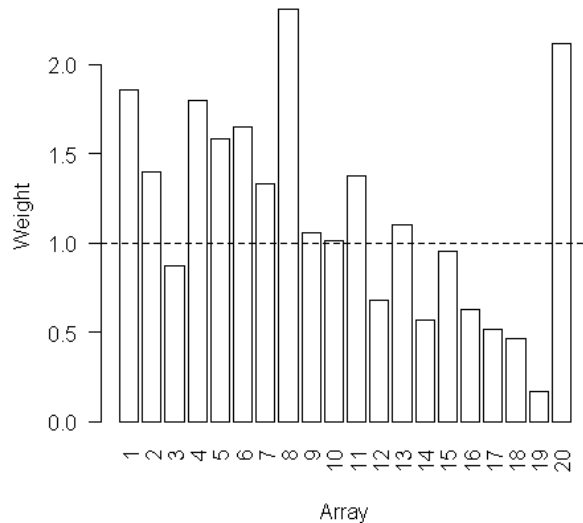
The method is implemented in the `arrayWeights` function, which fits a heteroscedastic model to the expression values for each gene by calling the function `lm.wfit`. (See also `arrayWeightsSimple` which does the same calculation more quickly when there are no probe-level quality weights.) The dispersion model is fitted to the squared residuals from the mean fit, and is set up to have array specific coefficients, which are updated in either full REML scoring iterations, or using an efficient gene-by-gene update algorithm. The final estimates of these array variances are converted to weights which can be used in `lmFit`. This method offers a graduated approach to quality assessment by allowing poorer quality arrays, which would otherwise be discarded, to be included in an analysis but down-weighted.

Below is an example of the method applied to the spike-in controls from a quality control data set courtesy of Andrew Holloway, Ryan van Laar and Dileepa Diyagama from the Peter MacCallum Cancer Centre in Melbourne. This collection of arrays (described in [22]) consists of 100 replicate hybridizations and we will use data from the first 20 arrays. The object `MA1ms` stores the loess normalized data for the 120 spike-in control probes on each array. Since these arrays are replicate hybridizations, the default design matrix of a single column of ones is used.

```
> arrayw <- arrayWeights(MA1ms)
```



```
> barplot(arrayw, xlab="Array", ylab="Weight", col="white", las=2)
> abline(h=1, lwd=1, lty=2)
```

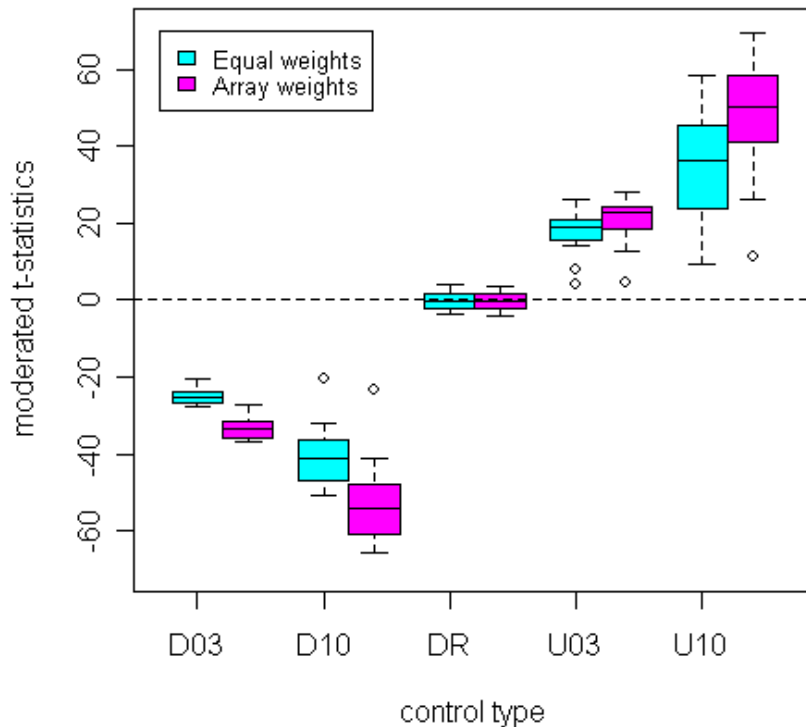


The empirical array weights vary from a minimum of 0.16 for array 19 to a maximum of 2.31 for array 8. These weights can be used in the linear model analysis.

```
> fitw <- lmFit(MAlms, weights=arrayw)
> fitw <- eBayes(fitw)
```

In this example the ratio control spots should show three-fold or ten-fold changes while the dynamic range spots should not be differentially expressed. To compare the moderated *t*-statistics before and after applying array weights, use the following:

```
> fit <- lmFit(MAlms)
> fit <- eBayes(fit)
> boxplot(fit$t~MAlms$genes$Status, at=1:5-0.2, col=5, boxwex=0.4, xlab="control type",
+         ylab="moderated t-statistics", pch=".", ylim=c(-70, 70), medlwd=1)
> boxplot(fitw$t~MAlms$genes$Status, at=1:5+0.2, col=6, boxwex=0.4,
+         add=TRUE, yaxt="n", xaxt="n", medlwd=1, pch=".")
> abline(h=0, col="black", lty=2, lwd=1)
> legend(0.5, 70, legend=c("Equal weights", "Array weights"), fill=c(5,6), cex=0.8)
```



The boxplots show that the t -statistics for all classes of ratio controls (D03, D10, U03 and U10) move further from zero when array weights are used while the distribution of t -statistics for the dynamic range controls (DR) does not noticeably change. This demonstrates that the array quality weights increase statistical power to detect true differential expression without increasing the false discovery rate.

The same heteroscedastic model can also be fitted at the print-tip group level using the `printtipWeights` function. If there are p print-tip groups across n arrays, the model fitting procedure described in [22] is repeated p times to produce a weight for each print-tip group on each array for use in `lmFit`. This method can be applied to two-color microarray data where the probes are organized into print-tip groups whose size is specified by the printer component of the `MAList`.

Below is an example of applying this method to the ApoAI data.

```
> ptw <- printtipWeights(MA, design, layout=MA$printer)
> zlim <- c(min(ptw), max(ptw))
> par(mfrow=c(3,2))
> for(i in seq(7,12,by=1))
+   imageplot(ptw[,i], layout=MA$printer, zlim=zlim, main=colnames(MA)[i])
```

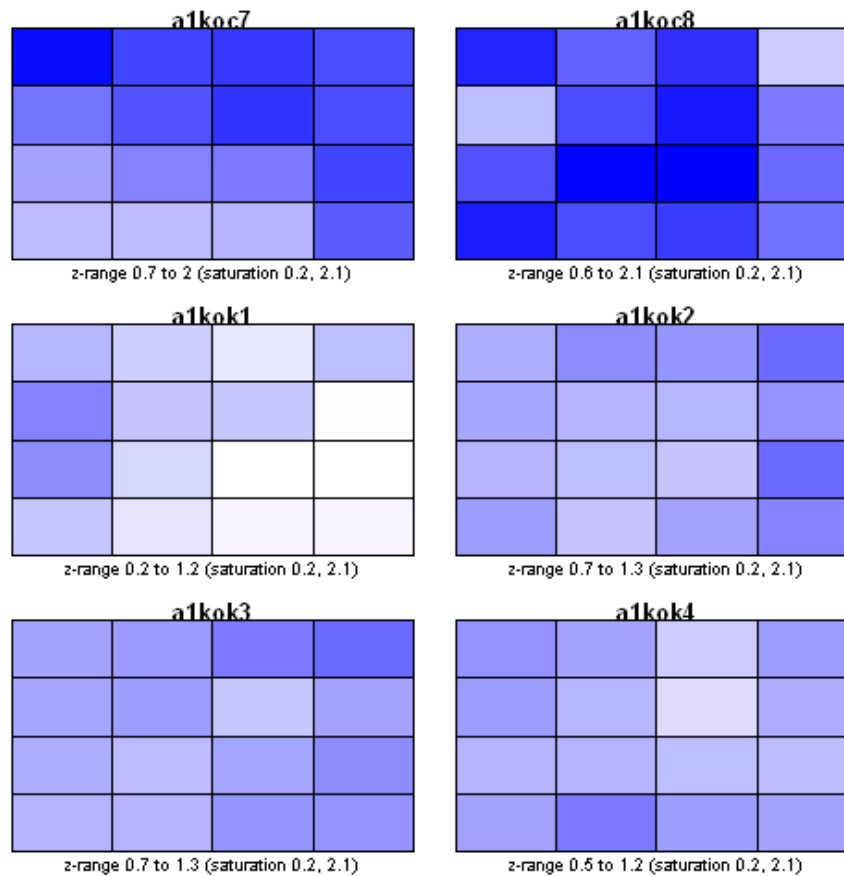


Image plots of the print-tip weights for arrays 7 through to 12 are shown above, with lighter shades indicating print-tip groups which have been assigned lower weights. A corner of array 9 (a1kok1) is measured to be less reproducible than the same region on other arrays, which may be indicative of a spatial artefact. Using these weights in the linear model analysis increases the *t*-statistics of the top ranking genes compared to an analysis without weights (compare the results table below with the table in section 11.2).

```
> fitptw <- lmFit(MA, design, weights=ptw)
> fitptw <- eBayes(fitptw)
> options(digits=3)
> topTable(fitptw,coef=2,number=15,genelist=fitptw$genes$NAME)
```

	ID	logFC	AveExpr	t	P.Value	adj.P.Val	B
2149	ApoAI,lipid-Img	-3.151	12.47	-25.64	1.21e-15	7.73e-12	16.4206
540	EST,HighlysimilartoA	-2.918	12.28	-14.49	2.22e-11	7.09e-08	12.4699
5356	CATECHOLO-METHYLTRAN	-1.873	12.93	-13.16	1.10e-10	2.34e-07	11.5734
4139	EST,WeaklysimilartoC	-0.981	12.61	-11.71	7.28e-10	1.16e-06	10.3623
1739	ApoCIII,lipid-Img	-0.933	13.74	-10.58	3.66e-09	4.67e-06	9.4155
1496	est	-0.949	12.23	-9.92	9.85e-09	1.05e-05	8.6905
2537	ESTs,Highlysimilarto	-1.011	13.63	-9.56	1.75e-08	1.60e-05	8.2587
4941	similartoyeaststerol	-0.873	13.29	-6.88	1.93e-06	1.54e-03	4.6875
947	EST,WeaklysimilartoF	-0.566	10.54	-5.08	7.78e-05	5.52e-02	1.6112
2812	5'similartoPIR:S5501	-0.514	11.65	-4.30	4.31e-04	2.75e-01	0.1242

6073	estrogenrec	0.412	9.79	4.21	5.27e-04	3.06e-01	-0.0497
1347	Musmusculustranscrip	-0.412	10.18	-4.07	7.09e-04	3.47e-01	-0.3106
634	MDB1376	-0.380	9.32	-4.07	7.11e-04	3.47e-01	-0.3123
2	Cy5RT	0.673	10.65	4.04	7.61e-04	3.47e-01	-0.3745
5693	Meox2	0.531	9.77	3.84	1.19e-03	4.74e-01	-0.7649

For example, the moderated t -statistic of the top ranked gene, ApoAI, which has been knocked-out in this experiment, increases in absolute terms from -23.98 when equal weights are used to -25.64 with print-tip weights. The t -statistic of the related gene ApoCIII also increases in absolute value (moderated t -statistic of -9.83 before weighting and -10.58 after). This analysis provides a further example that a graduated approach to quality control can improve power to detect differentially expressed genes.

Some advice on when to use array weights:

Array weights are generally useful when there is some reason to expect variable array quality. For example, RNA samples from human clinical patients are typically variable in quality, so array weights might be used routinely with human *in vivo* data, see for example Ellis et al [8]. If array quality plots suggest a problem, then array weights are indicated. If RNA is plentiful, e.g., from cell lines or model organisms, and quality plots of the arrays don't suggest problems, then array weights are usually not needed.

In gross cases where an array is clearly bad or wrong, it should be removed, rather than downweighted. However this action should be reserved for extreme cases.

If most genes are not differentially expressed, then the design matrix for arrayWeights does not need to be as complex as for the final linear model. For example, in a two-group comparison with just 2 replicates in each group, the array weights should be estimated with the default (intercept) design matrix, otherwise each array is compared only to its partner rather than to the other 3 arrays.

Chapter 11

Case Studies

11.1 Swirl Zebrafish: A Single-Sample Experiment

In this section we consider a case study in which two RNA sources are compared directly on a set of replicate or dye-swap arrays. The case study includes reading in the data, data display and exploration, as well as normalization and differential expression analysis. The analysis of differential expression is analogous to a classical one-sample test of location for each gene.

In this example we assume that the data is provided as a GAL file called `fish.gal` and raw SPOT output files and that these files are in the current working directory. The data used for this case study can be downloaded from <http://bioinf.wehi.edu.au/limmaGUI/DataSets.html>.

```
> dir()
[1] "fish.gal"          "swirl.1.spot"      "swirl.2.spot"      "swirl.3.spot"      "swirl.4.spot"
[6] "SwirlSample.txt"
```

Background. The experiment was carried out using zebrafish as a model organism to study the early development in vertebrates. Swirl is a point mutant in the BMP2 gene that affects the dorsal/ventral body axis. The main goal of the Swirl experiment is to identify genes with altered expression in the Swirl mutant compared to wild-type zebrafish.

The hybridizations. Two sets of dye-swap experiments were performed making a total of four replicate hybridizations. Each of the arrays compares RNA from swirl fish with RNA from normal (“wild type”) fish. The experimenters have prepared a tab-delimited targets file called `SwirlSamples.txt` which describes the four hybridizations:

```
> library(limma)
> targets <- readTargets("SwirlSample.txt")
> targets
  SlideNumber  FileName      Cy3      Cy5      Date
swirl.1        81 swirl.1.spot  swirl wild type 2001/9/20
swirl.2        82 swirl.2.spot wild type  swirl 2001/9/20
swirl.3        93 swirl.3.spot  swirl wild type 2001/11/8
swirl.4        94 swirl.4.spot wild type  swirl 2001/11/8
```

We see that slide numbers 81, 82, 93 and 94 were used to make the arrays. On slides 81 and 93, swirl RNA was labelled with green (Cy3) dye and wild type RNA was labelled with red (Cy5) dye. On slides 82 and 94, the labelling was the other way around.

Each of the four hybridized arrays was scanned on an Axon scanner to produce a TIFF image, which was then processed using the image analysis software SPOT. The data from the arrays are stored in the four output files listed under `FileName`. Now we read the intensity data into an `RGList` object in R. The default for SPOT output is that `Rmean` and `Gmean` are used as foreground intensities and `morphR` and `morphG` are used as background intensities:

```
> RG <- read.maimages(targets$FileName, source="spot")
Read swirl.1.spot
Read swirl.2.spot
Read swirl.3.spot
Read swirl.4.spot
> RG
An object of class "RGList"
$R
      swirl.1  swirl.2  swirl.3  swirl.4
[1,] 19538.470 16138.720 2895.1600 14054.5400
[2,] 23619.820 17247.670 2976.6230 20112.2600
[3,] 21579.950 17317.150 2735.6190 12945.8500
[4,]  8905.143  6794.381  318.9524   524.0476
[5,]  8676.095  6043.542   780.6667   304.6190
8443 more rows ...

$G
      swirl.1  swirl.2  swirl.3  swirl.4
[1,] 22028.260 19278.770 2727.5600 19930.6500
[2,] 25613.200 21438.960 2787.0330 25426.5800
[3,] 22652.390 20386.470 2419.8810 16225.9500
[4,]  8929.286  6677.619   383.2381   786.9048
[5,]  8746.476  6576.292   901.0000   468.0476
8443 more rows ...

$Rb
      swirl.1 swirl.2 swirl.3 swirl.4
[1,]    174    136    82    48
[2,]    174    133    82    48
[3,]    174    133    76    48
[4,]    163    105    61    48
[5,]    140    105    61    49
8443 more rows ...

$Gb
      swirl.1 swirl.2 swirl.3 swirl.4
[1,]    182    175    86    97
[2,]    171    183    86    85
[3,]    153    183    86    85
[4,]    153    142    71    87
[5,]    153    142    71    87
8443 more rows ...
```

The arrays. The microarrays used in this experiment were printed with 8448 probes (spots), including 768 control spots. The array printer uses a print head with a 4x4 arrangement of print-tips and so the microarrays are partitioned into a 4x4 grid of tip groups. Each grid consists of 22x24 spots that were printed with a single print-tip. The gene name associated with each spot is recorded in a GenePix array list (GAL) file:

```
> RG$genes <- readGAL("fish.gal")
> RG$genes[1:30,]
```

	Block	Row	Column	ID	Name
1	1	1	1	control	geno1
2	1	1	2	control	geno2
3	1	1	3	control	geno3
4	1	1	4	control	3XSSC
5	1	1	5	control	3XSSC
6	1	1	6	control	EST1
7	1	1	7	control	geno1
8	1	1	8	control	geno2
9	1	1	9	control	geno3
10	1	1	10	control	3XSSC
11	1	1	11	control	3XSSC
12	1	1	12	control	3XSSC
13	1	1	13	control	EST2
14	1	1	14	control	EST3
15	1	1	15	control	EST4
16	1	1	16	control	3XSSC
17	1	1	17	control	Actin
18	1	1	18	control	Actin
19	1	1	19	control	3XSSC
20	1	1	20	control	3XSSC
21	1	1	21	control	3XSSC
22	1	1	22	control	3XSSC
23	1	1	23	control	Actin
24	1	1	24	control	Actin
25	1	2	1	control	ath1
26	1	2	2	control	Cad-1
27	1	2	3	control	DeltaB
28	1	2	4	control	Dlx4
29	1	2	5	control	ephrinA4
30	1	2	6	control	FGF8

Because we are using SPOT output, the 4x4x22x24 print layout also needs to be set. The easiest way to do this is to infer it from the GAL file:

```
> RG$printer <- getLayout(RG$genes)
```

Image plots. It is interesting to look at the variation of background values over the array. Consider image plots of the red and green background for the first array:

```
> imageplot(log2(RG$Rb[,1]), RG$printer, low="white", high="red")
> imageplot(log2(RG$Gb[,1]), RG$printer, low="white", high="green")
```

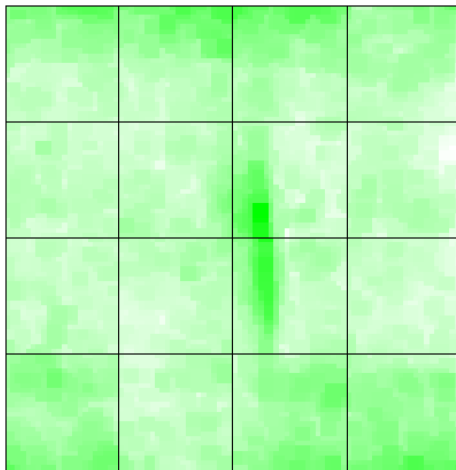
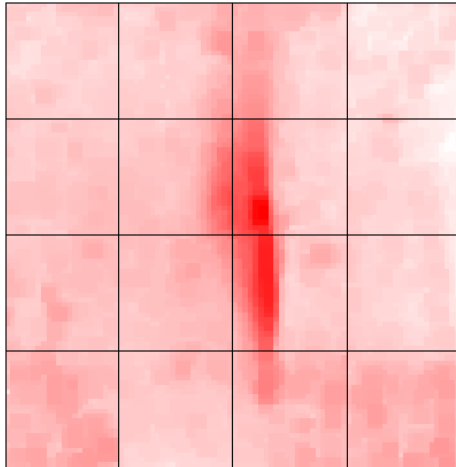
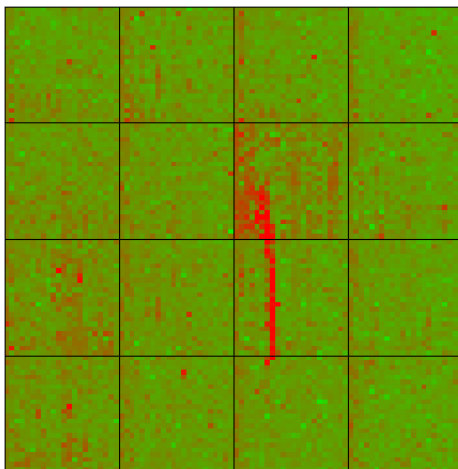


Image plot of the un-normalized log-ratios or M-values for the first array:

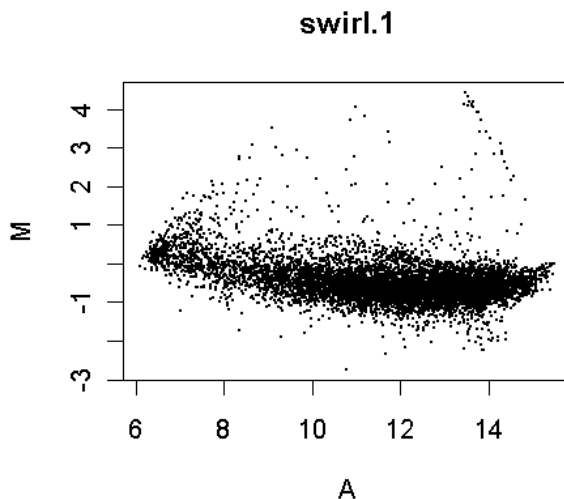
```
> MA <- normalizeWithinArrays(RG, method="none")  
> imageplot(MA$M[,1], RG$printer, zlim=c(-3,3))
```

The `imageplot` function lies the slide on its side, so the first print-tip group is bottom left in this plot. We can see a red streak across the middle two grids of the 3rd row caused by a scratch or dust on the array. Spots which are affected by this artefact will have suspect M-values. The streak also shows up as darker regions in the background plots.

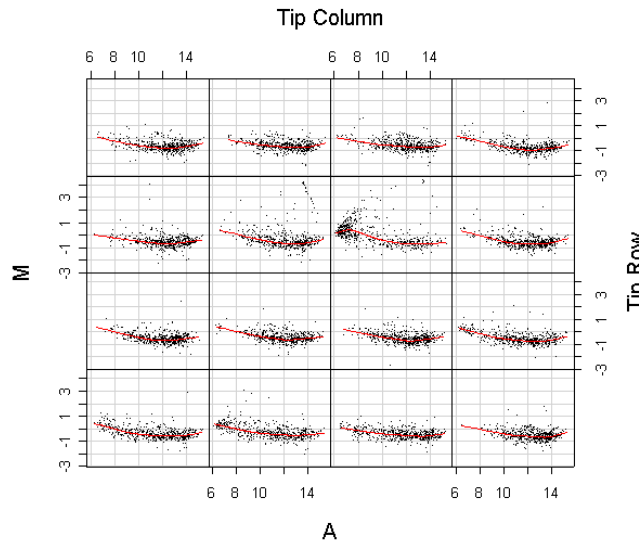
MA-plots. An MA-plot plots the log-ratio of R vs G against the overall intensity of each spot. The log-ratio is represented by the M-value, $M = \log_2(R) - \log_2(G)$, and the overall intensity by the A-value, $A = (\log_2(R) + \log_2(G))/2$. Here is the MA-plot of the un-normalized values for the first array:

```
> plotMA(MA)
```



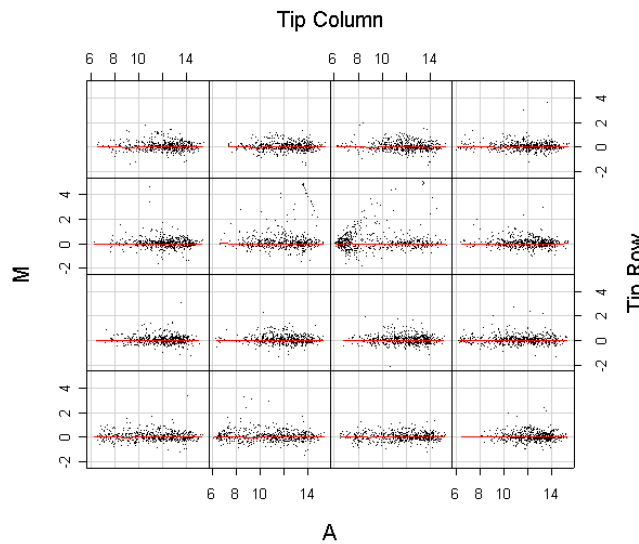
The red streak seen on the image plot can be seen as a line of spots in the upper right of this plot. Now we plot the individual MA-plots for each of the print-tip groups on this array, together with the loess curves which will be used for normalization:

```
> plotPrintTipLoess(MA)
```



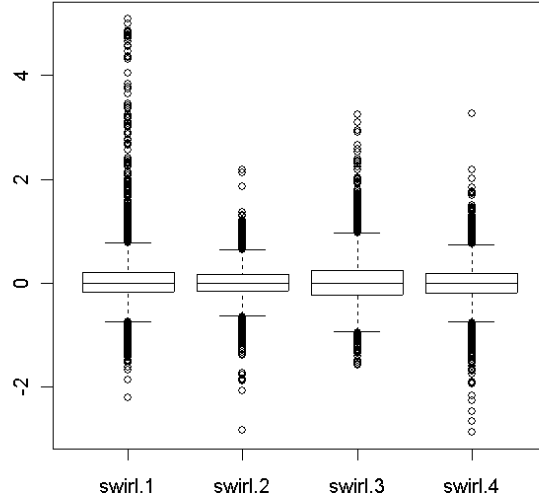
Normalization. Print-tip loess normalization:

```
> MA <- normalizeWithinArrays(RG)
> plotPrintTipLoess(MA)
```



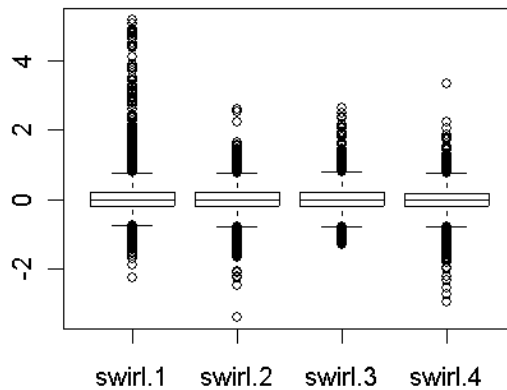
We have normalized the M-values with each array. A further question is whether normalization is required between the arrays. The following plot shows overall boxplots of the M-values for the four arrays.

```
> boxplot(MA$M~col(MA$M),names=colnames(MA$M))
```



There is evidence that the different arrays have different spreads of M-values, so we will scale normalize between the arrays. (Note this is not done routinely for all two-color data sets. It should only be done when there is good evidence of a scale difference.)

```
> MA <- normalizeBetweenArrays(MA,method="scale")
> boxplot(MA$M~col(MA$M),names=colnames(MA$M))
```



Linear model. Now estimate the average M-value for each gene. We do this by fitting a simple linear model for each gene. The negative numbers in the design matrix indicate the dye-swaps.

```

> design <- c(-1,1,-1,1)
> fit <- lmFit(MA,design)
> fit
An object of class "MArrayLM"
$coefficients
[1] -0.3943421 -0.3656843 -0.3912506 -0.2505729 -0.3432590
8443 more rows ...

$rank
[1] 1

$assign
NULL

$qr
$qr
      [,1]
[1,]  2.0
[2,] -0.5
[3,]  0.5
[4,] -0.5

$qraux
[1] 1.5

$pivot
[1] 1

$tol
[1] 1e-07

$rank
[1] 1

attr(,"class")
[1] "qr"

$df.residual
[1] 3 3 3 3 3
8443 more elements ...

$sigma
[1] 0.3805154 0.4047829 0.4672451 0.3206071 0.2838043
8443 more elements ...

$cov.coefficients
      [,1]
[1,] 0.25

$stdev.unscaled
[1] 0.5 0.5 0.5 0.5 0.5
8443 more rows ...

```

```

$pivot
[1] 1

$method
[1] "ls"

$design
  [,1]
[1,] -1
[2,]  1
[3,] -1
[4,]  1

$genes
  Block Row Column      ID Name
1     1   1     1 control  geno1
2     1   1     2 control  geno2
3     1   1     3 control  geno3
4     1   1     4 control  3XSSC
5     1   1     5 control  3XSSC
8443 more rows ...

$Amean
[1] 13.51784 13.72765 13.48607 10.89367 10.97615
8443 more elements ...

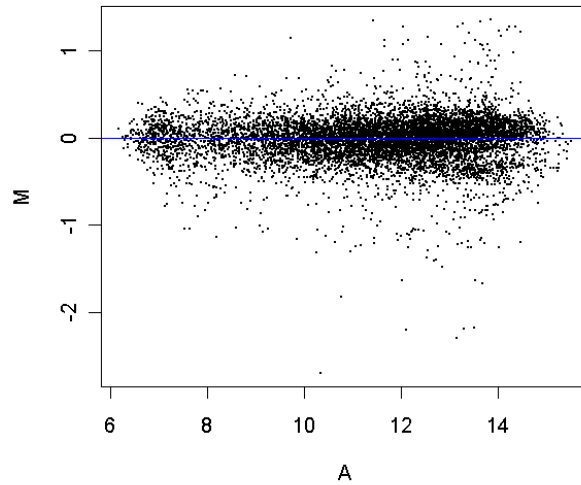
```

In the above fit object, `coefficients` is the average M-value for each gene and `sigma` is the sample standard deviations for each gene. Ordinary *t*-statistics for comparing mutant to wt could be computed by

```
> ordinary.t <- fit$coef / fit$stdev.unscaled / fit$sigma
```

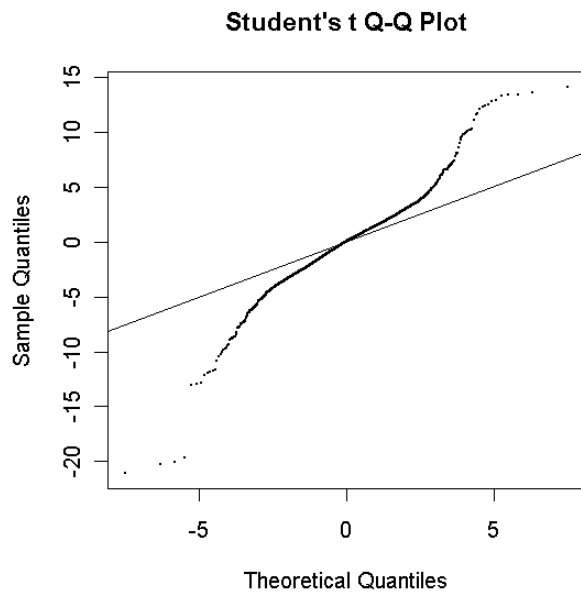
We prefer though to use empirical Bayes moderated *t*-statistics which are computed below. Now create an MA-plot of the average M and A-values for each gene.

```
> plotMA(fit)
> abline(0,0,col="blue")
```



Empirical Bayes analysis. We will now go on and compute empirical Bayes statistics for differential expression. The moderated t -statistics use sample standard deviations which have been shrunk towards a pooled standard deviation value.

```
> fit <- eBayes(fit)
> qqf(fit$t,df=fit$df.prior+fit$df.residual,pch=16,cex=0.2)
> abline(0,1)
```



Visually there seems to be plenty of genes which are differentially expressed. We will obtain a summary table of some key statistics for the top genes.

```

> options(digits=3)
> topTable(fit,number=30,adjust="BH")

```

	Block	Row	Column	ID	Name	logFC	AveExpr	t	P.Value	adj.P.Val	B
3721	8	2	1	control	BMP2	-2.21	12.1	-21.1	1.03e-07	0.000357	7.96
1609	4	2	1	control	BMP2	-2.30	13.1	-20.3	1.34e-07	0.000357	7.78
3723	8	2	3	control	Dlx3	-2.18	13.3	-20.0	1.48e-07	0.000357	7.71
1611	4	2	3	control	Dlx3	-2.18	13.5	-19.6	1.69e-07	0.000357	7.62
8295	16	16	15	fb94h06	20-L12	1.27	12.0	14.1	1.74e-06	0.002067	5.78
7036	14	8	4	fb40h07	7-D14	1.35	13.8	13.5	2.29e-06	0.002067	5.54
515	1	22	11	fc22a09	27-E17	1.27	13.2	13.4	2.44e-06	0.002067	5.48
5075	10	14	11	fb85f09	18-G18	1.28	14.4	13.4	2.46e-06	0.002067	5.48
7307	14	19	11	fc10h09	24-H18	1.20	13.4	13.2	2.67e-06	0.002067	5.40
319	1	14	7	fb85a01	18-E1	-1.29	12.5	-13.1	2.91e-06	0.002067	5.32
2961	6	14	9	fb85d05	18-F10	-2.69	10.3	-13.0	3.04e-06	0.002067	5.29
4032	8	14	24	fb87d12	18-N24	1.27	14.2	12.8	3.28e-06	0.002067	5.22
6903	14	2	15	control	Vox	-1.26	13.4	-12.8	3.35e-06	0.002067	5.20
4546	9	14	10	fb85e07	18-G13	1.23	14.2	12.8	3.42e-06	0.002067	5.18
683	2	7	11	fb37b09	6-E18	1.31	13.3	12.4	4.10e-06	0.002182	5.02
1697	4	5	17	fb26b10	3-I20	1.09	13.3	12.4	4.30e-06	0.002182	4.97
7491	15	5	3	fb24g06	3-D11	1.33	13.6	12.3	4.39e-06	0.002182	4.96
4188	8	21	12	fc18d12	26-F24	-1.25	12.1	-12.2	4.71e-06	0.002209	4.89
4380	9	7	12	fb37e11	6-G21	1.23	14.0	12.0	5.19e-06	0.002216	4.80
3726	8	2	6	control	fli-1	-1.32	10.3	-11.9	5.40e-06	0.002216	4.76
2679	6	2	15	control	Vox	-1.25	13.4	-11.9	5.72e-06	0.002216	4.71
5931	12	6	3	fb32f06	5-C12	-1.10	13.0	-11.7	6.24e-06	0.002216	4.63
7602	15	9	18	fb50g12	9-L23	1.16	14.0	11.7	6.25e-06	0.002216	4.63
2151	5	2	15	control	vent	-1.40	12.7	-11.7	6.30e-06	0.002216	4.62
3790	8	4	22	fb23d08	2-N16	1.16	12.5	11.6	6.57e-06	0.002221	4.58
7542	15	7	6	fb36g12	6-D23	1.12	13.5	11.0	9.23e-06	0.003000	4.27
4263	9	2	15	control	vent	-1.41	12.7	-10.8	1.06e-05	0.003326	4.13
6375	13	2	15	control	vent	-1.37	12.5	-10.5	1.33e-05	0.004026	3.91
1146	3	4	18	fb22a12	2-I23	1.05	13.7	10.2	1.57e-05	0.004242	3.76
157	1	7	13	fb38a01	6-I1	-1.82	10.8	-10.2	1.58e-05	0.004242	3.75

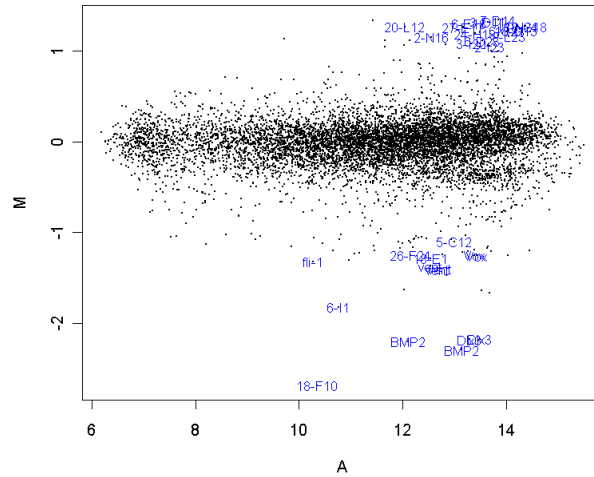
The top gene is BMP2 which is significantly down-regulated in the Swirl zebrafish, as it should be because the Swirl fish are mutant in this gene. Other positive controls also appear in the top 30 genes in terms.

In the table, t is the empirical Bayes moderated t -statistic, the corresponding P-values have been adjusted to control the false discovery rate and B is the empirical Bayes log odds of differential expression.

```

> plotMA(fit)
> ord <- order(fit$lods,decreasing=TRUE)
> top30 <- ord[1:30]
> text(fit$Amean[top30],fit$coef[top30],labels=fit$genes[top30,"Name"],cex=0.8,col="blue")

```



11.2 ApoAI Knockout Data: A Two-Sample Experiment

In this section we consider a case study where two RNA sources are compared through a common reference RNA. The analysis of the log-ratios involves a two-sample comparison of means for each gene.

In this example we assume that the data is available as an `RGList` in the data file `ApoAI.RData`. The data used for this case study can be downloaded from <http://bioinf.wehi.edu.au/limmaGUI/DataSets.html>.

Background. The data is from a study of lipid metabolism by [4]. The apolipoprotein AI (ApoAI) gene is known to play a pivotal role in high density lipoprotein (HDL) metabolism. Mice which have the ApoAI gene knocked out have very low HDL cholesterol levels. The purpose of this experiment is to determine how ApoAI deficiency affects the action of other genes in the liver, with the idea that this will help determine the molecular pathways through which ApoAI operates.

Hybridizations. The experiment compared 8 ApoAI knockout mice with 8 normal C57BL/6 (“black six”) mice, the control mice. For each of these 16 mice, target mRNA was obtained from liver tissue and labelled using a Cy5 dye. The RNA from each mouse was hybridized to a separate microarray. Common reference RNA was labelled with Cy3 dye and used for all the arrays. The reference RNA was obtained by pooling RNA extracted from the 8 control mice.

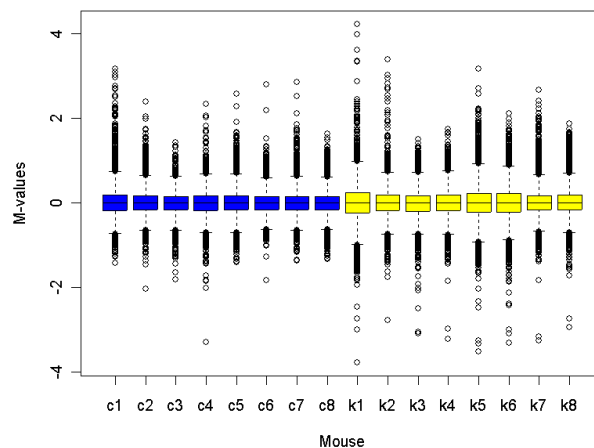
Number of arrays	Red	Green
8	Normal “black six” mice	Pooled reference
8	ApoAI knockout	Pooled reference

This is an example of a single comparison experiment using a common reference. The fact that the comparison is made by way of a common reference rather than directly as for the swirl experiment makes this, for each gene, a two-sample rather than a single-sample setup.

```

> load("ApoAI.RData")
> objects()
[1] "RG"
> names(RG)
[1] "R" "G" "Rb" "Gb" "printer" "genes" "targets"
> RG$targets
  FileName Cy3   Cy5
c1 a1koc1.spot Pool C57BL/6
c2 a1koc2.spot Pool C57BL/6
c3 a1koc3.spot Pool C57BL/6
c4 a1koc4.spot Pool C57BL/6
c5 a1koc5.spot Pool C57BL/6
c6 a1koc6.spot Pool C57BL/6
c7 a1koc7.spot Pool C57BL/6
c8 a1koc8.spot Pool C57BL/6
k1 a1kok1.spot Pool ApoAI-/-
k2 a1kok2.spot Pool ApoAI-/-
k3 a1kok3.spot Pool ApoAI-/-
k4 a1kok4.spot Pool ApoAI-/-
k5 a1kok5.spot Pool ApoAI-/-
k6 a1kok6.spot Pool ApoAI-/-
k7 a1kok7.spot Pool ApoAI-/-
k8 a1kok8.spot Pool ApoAI-/-
> MA <- normalizeWithinArrays(RG)
> cols <- MA$targets$Cy5
> cols[cols=="C57BL/6"] <- "blue"
> cols[cols=="ApoAI-/-"] <- "yellow"
> boxplot(MA$M~col(MA$M),names=rownames(MA$targets),col=cols,xlab="Mouse",ylab="M-values")

```



Since the common reference here is a pool of the control mice, we expect to see more differences from the pool for the knock-out mice than for the control mice. In terms of the above plot,

this should translate into a wider range of M-values for the knock-out mice arrays than for the control arrays, and we do see this. Since the different arrays are not expected to have the same range of M-values, between-array scale normalization of the M-values is not appropriate here.

Now we can go on to estimate the fold change between the two groups. In this case the design matrix has two columns. The coefficient for the second column estimates the parameter of interest, the log-ratio between knockout and control mice.

```
> design <- cbind("Control-Ref"=1,"KO-Control"=MA$targets$Cy5=="ApoAI-/-")
> design
      Control-Ref KO-Control
[1,]           1           0
[2,]           1           0
[3,]           1           0
[4,]           1           0
[5,]           1           0
[6,]           1           0
[7,]           1           0
[8,]           1           0
[9,]           1           1
[10,]          1           1
[11,]          1           1
[12,]          1           1
[13,]          1           1
[14,]          1           1
[15,]          1           1
[16,]          1           1
> fit <- lmFit(MA, design)
> fit$coef[1:5,]
      Control-Ref KO-Control
[1,]    -0.6595     0.6393
[2,]     0.2294     0.6552
[3,]    -0.2518     0.3342
[4,]    -0.0517     0.0405
[5,]    -0.2501     0.2230
> fit <- eBayes(fit)
> options(digits=3)
```

Normally at this point one would just type

```
> topTable(fit,coef=2)
```

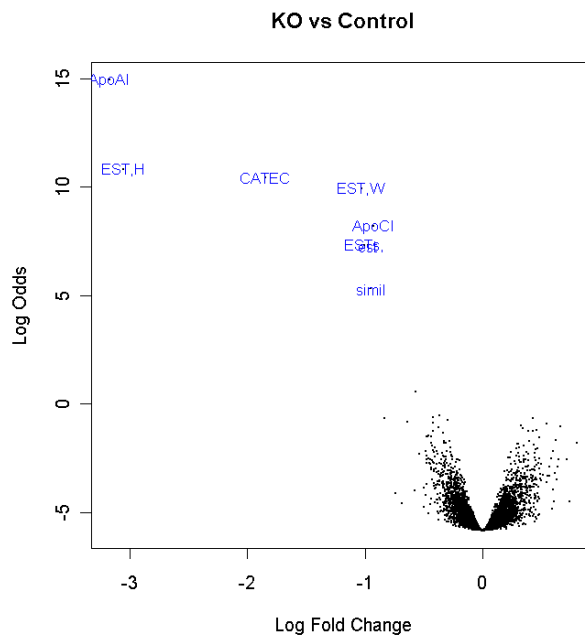
However, the gene annotation is a bit wide for the printed page, so we will tell `codetopTable()` to show just one column of the annotation information:

```
> topTable(fit,coef=2,number=15,genelist=fit$genes$NAME)
      ID logFC AveExpr      t P.Value adj.P.Val      B
2149 ApoAI,lipid-Img -3.166  12.47 -23.98 4.77e-15 3.05e-11 14.927
540  EST,Highlysimilar to A -3.049  12.28 -12.96 1.57e-10 5.02e-07 10.813
5356 CATECHOLO-METHYLTRAN -1.848  12.93 -12.44 3.06e-10 6.51e-07 10.448
4139 EST,Weaklysimilar to C -1.027  12.61 -11.76 7.58e-10 1.21e-06 9.929
```

1739	ApoCIII,lipid-Img	-0.933	13.74	-9.84	1.22e-08	1.56e-05	8.192
2537	ESTs,Highlysimilar	-1.010	13.63	-9.02	4.53e-08	4.22e-05	7.305
1496	est	-0.977	12.23	-9.00	4.63e-08	4.22e-05	7.290
4941	similartoyeaststerol	-0.955	13.29	-7.44	7.04e-07	5.62e-04	5.311
947	EST,Weaklysimilar	-0.571	10.54	-4.55	2.49e-04	1.77e-01	0.563
5604		-0.366	12.71	-3.96	9.22e-04	5.29e-01	-0.553
4140	APXL2,5q-Img	-0.420	9.79	-3.93	9.96e-04	5.29e-01	-0.619
6073	estrogenrec	0.421	9.79	3.91	1.03e-03	5.29e-01	-0.652
1337	psoriasis-associated	-0.838	11.66	-3.89	1.08e-03	5.29e-01	-0.687
954	Caspase7,heart-Img	-0.302	12.14	-3.86	1.17e-03	5.30e-01	-0.757
563	FATTYACID-BINDINGPRO	-0.637	11.62	-3.81	1.29e-03	5.30e-01	-0.839

Notice that the top gene is ApoAI itself which is heavily down-regulated. Theoretically the M-value should be minus infinity for ApoAI because it is the knockout gene. Several of the other genes are closely related. The top eight genes here were confirmed by independent assay subsequent to the microarray experiment to be differentially expressed in the knockout versus the control line.

```
> volcanoplot(fit,coef=2,highlight=8,names=fit$genes$NAME,main="KO vs Control")
```



11.3 Ecoli Lrp Data: Affymetrix Data with Two Targets

The data are from experiments reported in [10] and are available from the www site <http://visitor.ics.uci.edu/genex/cybert/tutorial/index.html>. The data is also available from the ecoliLeucine data package available from the Bioconductor www site under "Experimental Data". Hung et al [10] state that

The purpose of the work presented here is to identify the network of genes that are differentially regulated by the global *E. coli* regulatory protein, leucine-responsive regulatory protein (Lrp), during steady state growth in a glucose supplemented minimal salts medium. Lrp is a DNA-binding protein that has been reported to affect the expression of approximately 55 genes.

Gene expression in two *E. coli* bacteria strains, labelled *lrp+* and *lrp-*, were compared using eight Affymetrix *ecoli* chips, four chips each for *lrp+* and *lrp-*.

The following code assumes that the data files for the eight chips are in your current working directory.

```
> dir()
[1] "Ecoli.CDF"          "nolrp_1.CEL"      "nolrp_2.CEL"
[4] "nolrp_3.CEL"       "nolrp_4.CEL"     "wt_1.CEL"
[7] "wt_2.CEL"          "wt_3.CEL"        "wt_4.CEL"
```

The data is read and normalized using the `affy` package. The package `ecolicdf` must also be installed, otherwise the `rma()` function will attempt to download and install it for you—without giving you the opportunity to veto the download.

```
> library(limma)
> library(affy)
Welcome to Bioconductor
  Vignettes contain introductory material.  To view,
  simply type: openVignette()
  For details on reading vignettes, see
  the openVignette help page.
> Data <- ReadAffy()
> eset <- rma(Data)
Background correcting
Normalizing
Calculating Expression
> pData(eset)
      sample
nolrp_1.CEL  1
nolrp_2.CEL  2
nolrp_3.CEL  3
nolrp_4.CEL  4
wt_1.CEL     5
wt_2.CEL     6
wt_3.CEL     7
wt_4.CEL     8
```

Now we consider differential expression between the *lrp+* and *lrp-* strains.

```
> strain <- c("lrp-", "lrp-", "lrp-", "lrp-", "lrp+", "lrp+", "lrp+", "lrp+")
> design <- model.matrix(~factor(strain))
> colnames(design) <- c("lrp-", "lrp+vs-")
> design
  lrp- lrp+vs-
1    1      0
```

```

2 1 0
3 1 0
4 1 0
5 1 1
6 1 1
7 1 1
8 1 1
attr(,"assign")
[1] 0 1
attr(,"contrasts")
attr(,"contrasts")$"factor(strain)"
[1] "contr.treatment"

```

The first coefficient measures \log_2 -expression of each gene in the *lrp-* strain. The second coefficient measures the \log_2 -fold change of *lrp+* over *lrp-*, i.e., the log-fold change induced by *lrp*.

```

> fit <- lmFit(eset, design)
> fit <- eBayes(fit)
> options(digits=2)
> topTable(fit, coef=2, n=40, adjust="BH")

```

	ID	logFC	AveExpr	t	P.Value	adj.P.Val	B
4282	IG_821_1300838_1300922_fwd_st	-3.32	12.4	-23.1	7.2e-09	5.3e-05	8.017
5365	serA_b2913_st	2.78	12.2	15.8	1.6e-07	6.0e-04	6.603
1389	gltD_b3213_st	3.03	10.9	13.3	6.4e-07	1.6e-03	5.779
4625	lrp_b0889_st	2.30	9.3	11.4	2.3e-06	4.0e-03	4.911
1388	gltB_b3212_st	3.24	10.1	11.1	2.8e-06	4.0e-03	4.766
4609	livK_b3458_st	2.35	9.9	10.8	3.5e-06	4.0e-03	4.593
4901	oppB_b1244_st	-2.91	10.7	-10.6	4.0e-06	4.0e-03	4.504
4903	oppD_b1246_st	-1.94	10.4	-10.5	4.4e-06	4.0e-03	4.434
5413	sodA_b3908_st	1.50	10.3	9.7	8.0e-06	6.5e-03	3.958
4900	oppA_b1243_st	-2.98	13.0	-9.1	1.3e-05	9.2e-03	3.601
5217	rmf_b0953_st	-2.71	13.6	-9.0	1.5e-05	9.3e-03	3.474
7300	ytfK_b4217_st	-2.64	11.1	-8.9	1.5e-05	9.3e-03	3.437
5007	pntA_b1603_st	1.58	10.1	8.3	2.5e-05	1.4e-02	3.019
4281	IG_820_1298469_1299205_fwd_st	-2.45	10.7	-8.1	3.1e-05	1.6e-02	2.843
4491	ilvI_b0077_st	0.95	10.0	7.4	6.3e-05	2.9e-02	2.226
5448	stpA_b2669_st	1.79	10.0	7.4	6.4e-05	2.9e-02	2.210
611	b2343_st	-2.12	10.8	-7.1	7.9e-05	3.4e-02	2.028
5930	ybfA_b0699_st	-0.91	10.5	-7.0	8.7e-05	3.5e-02	1.932
1435	grxB_b1064_st	-0.91	9.8	-6.9	1.0e-04	3.8e-02	1.810
4634	lysU_b4129_st	-3.30	9.3	-6.9	1.1e-04	3.9e-02	1.758
4829	ndk_b2518_st	1.07	11.1	6.7	1.2e-04	4.3e-02	1.616
2309	IG_1643_2642304_2642452_rev_st	0.83	9.6	6.7	1.3e-04	4.3e-02	1.570
4902	oppC_b1245_st	-2.15	10.7	-6.3	1.9e-04	5.9e-02	1.238
4490	ilvH_b0078_st	1.11	9.9	5.9	2.9e-04	8.8e-02	0.820
1178	fimA_b4314_st	3.40	11.7	5.9	3.2e-04	8.8e-02	0.743
6224	ydgR_b1634_st	-2.35	9.8	-5.8	3.3e-04	8.8e-02	0.722
4904	oppF_b1247_st	-1.46	9.9	-5.8	3.3e-04	8.8e-02	0.720
792	b3914_st	-0.77	9.5	-5.7	3.9e-04	1.0e-01	0.565
5008	pntB_b1602_st	1.47	12.8	5.6	4.1e-04	1.0e-01	0.496
4610	livM_b3456_st	1.04	8.5	5.5	4.7e-04	1.1e-01	0.376

5097	ptsG_b1101_st	1.16	12.2	5.5	4.8e-04	1.1e-01	0.352
4886	nupC_b2393_st	0.79	9.6	5.5	4.9e-04	1.1e-01	0.333
4898	ompT_b0565_st	2.67	10.5	5.4	5.6e-04	1.2e-01	0.218
5482	tdh_b3616_st	-1.61	10.5	-5.3	6.3e-04	1.3e-01	0.092
1927	IG_13_14080_14167_fwd_st	-0.55	8.4	-5.3	6.4e-04	1.3e-01	0.076
6320	yeeF_b2014_st	0.88	9.9	5.3	6.5e-04	1.3e-01	0.065
196	atpG_b3733_st	0.60	12.5	5.2	7.2e-04	1.4e-01	-0.033
954	cydB_b0734_st	-0.76	11.0	-5.0	9.3e-04	1.8e-01	-0.272
1186	fimI_b4315_st	1.15	8.3	5.0	9.5e-04	1.8e-01	-0.298
4013	IG_58_107475_107629_fwd_st	-0.49	10.4	-4.9	1.1e-03	2.0e-01	-0.407

The column M gives the \log_2 -fold change while the column A gives the average \log_2 -intensity for the probe-set. Positive M-values mean that the gene is up-regulated in *lrp+*, negative values mean that it is repressed.

It is interesting to compare this table with Tables III and IV in [10]. Note that the top-ranked gene is an intergenic region (IG) tRNA gene. The knock-out gene itself is in position four. Many of the genes in the above table, including the *ser*, *glt*, *liv*, *opp*, *lys*, *ilv* and *fim* families, are known targets of *lrp*.

11.4 Estrogen Data: A 2x2 Factorial Experiment with Affymetrix Arrays

This data is from the `estrogen` package on Bioconductor. A subset of the data is also analyzed in the `factDesign` package vignette. To repeat this case study you will need to have the R packages `affy`, `estrogen` and `hgu95av2cdf` installed.

The data gives results from a 2x2 factorial experiment on MCF7 breast cancer cells using Affymetrix HGU95av2 arrays. The factors in this experiment were estrogen (present or absent) and length of exposure (10 or 48 hours). The aim of the study is the identify genes which respond to estrogen and to classify these into early and late responders. Genes which respond early are putative direct-target genes while those which respond late are probably downstream targets in the molecular pathway.

First load the required packages:

```
> library(limma)
> library(affy)
Welcome to Bioconductor
  Vignettes contain introductory material. To view,
  simply type: openVignette()
  For details on reading vignettes, see
  the openVignette help page.
> library(hgu95av2cdf)
```

The data files are contained in the `extdata` directory of the `estrogen` package:

```
> datadir <- file.path(.find.package("estrogen"), "extdata")
> dir(datadir)
[1] "00Index"      "bad.cel"      "high10-1.cel" "high10-2.cel" "high48-1.cel"
```

```
[6] "high48-2.cel" "low10-1.cel" "low10-2.cel" "low48-1.cel" "low48-2.cel"
[11] "phenoData.txt"
```

The targets file is called phenoData.txt. We see there are two arrays for each experimental condition, giving a total of 8 arrays.

```
> targets <- readTargets("phenoData.txt",path=datadir,sep="",row.names="filename")
> targets
      filename estrogen time.h
low10-1 low10-1.cel  absent    10
low10-2 low10-2.cel  absent    10
high10-1 high10-1.cel present    10
high10-2 high10-2.cel present    10
low48-1 low48-1.cel  absent    48
low48-2 low48-2.cel  absent    48
high48-1 high48-1.cel present    48
high48-2 high48-2.cel present    48
```

Now read the cel files into an AffyBatch object and normalize using the `rma()` function from the `affy` package:

```
> ab <- ReadAffy(filenamees=targets$filename, celfile.path=datadir)
> eset <- rma(ab)
Background correcting
Normalizing
Calculating Expression
```

There are many ways to construct a design matrix for this experiment. Given that we are interested in the early and late estrogen responders, we can choose a parametrization which includes these two contrasts.

```
> treatments <- factor(c(1,1,2,2,3,3,4,4),labels=c("e10","E10","e48","E48"))
> contrasts(treatments) <- cbind(Time=c(0,0,1,1),E10=c(0,1,0,0),E48=c(0,0,0,1))
> design <- model.matrix(~treatments)
> colnames(design) <- c("Intercept","Time","E10","E48")
```

The second coefficient picks up the effect of time in the absence of estrogen. The third and fourth coefficients estimate the \log_2 -fold change for estrogen at 10 hours and 48 hours respectively.

```
> fit <- lmFit(eset,design)
```

We are only interested in the estrogen effects, so we choose a contrast matrix which picks these two coefficients out:

```
> cont.matrix <- cbind(E10=c(0,0,1,0),E48=c(0,0,0,1))
> fit2 <- contrasts.fit(fit, cont.matrix)
> fit2 <- eBayes(fit2)
```

We can examine which genes respond to estrogen at either time using the moderated F -statistics on 2 degrees of freedom. The moderated F p -value is stored in the component `fit2$F.p.value`.

What p -value cutoff should be used? One way to decide which changes are significant for each gene would be to use Benjamini and Hochberg's method to control the false discovery rate across all the genes and both tests:

```
> results <- decideTests(fit2, method="global")
```

Another method would be to adjust the F -test p -values rather than the t -test p -values:

```
> results <- decideTests(fit2, method="nestedF")
```

Here we use a more conservative method which depends far less on distributional assumptions, which is to make use of control and spike-in probe-sets which theoretically should not be differentially-expressed. The smallest p -value amongst these controls turns out to be about 0.00014:

```
> i <- grep("AFFX",featureNames(eset))
> summary(fit2$F.p.value[i])
      Min. 1st Qu.  Median    Mean 3rd Qu.    Max.
0.0001391 0.1727000 0.3562000 0.4206000 0.6825000 0.9925000
```

So a cutoff p -value of 0.0001, say, would conservatively avoid selecting any of the control probe-sets as differentially expressed:

```
> results <- classifyTestsF(fit2, p.value=0.0001)
```

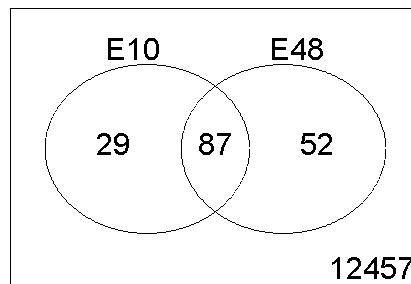
```
> summary(results)
      E10  E48
```

```
-1    40    76
 0 12469 12410
 1   116   139
```

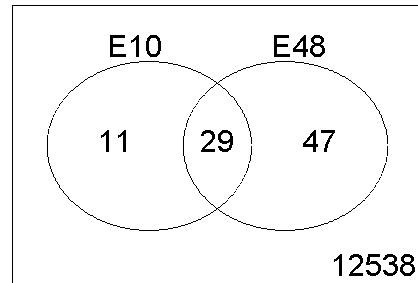
```
> table(E10=results[,1],E48=results[,2])
      E48
```

```
E10  -1    0    1
  -1   29   11   0
   0   47 12370  52
   1    0   29   87
```

```
> vennDiagram(results,include="up")
```




```
> vennDiagram(results,include="down")
```



We see that 87 genes were up regulated at both 10 and 48 hours, 29 only at 10 hours and 52 only at 48 hours. Also, 29 genes were down-regulated throughout, 11 only at 10 hours and 47 only at 48 hours. No genes were up at one time and down at the other.

`topTable` gives a detailed look at individual genes. The leading genes are clearly significant.

```
> options(digits=3)
> topTable(fit2,coef="E10",n=20)
      ID logFC AveExpr      t P.Value adj.P.Val      B
9735  39642_at  2.94   7.88  23.7 4.74e-09  3.13e-05  9.97
12472   910_at  3.11   9.66  23.6 4.96e-09  3.13e-05  9.94
1814  31798_at  2.80  12.12  16.4 1.02e-07  3.52e-04  7.98
11509 41400_at  2.38  10.04  16.2 1.11e-07  3.52e-04  7.92
10214 40117_at  2.56   9.68  15.7 1.47e-07  3.58e-04  7.70
953    1854_at  2.51   8.53  15.2 1.95e-07  3.58e-04  7.49
9848  39755_at  1.68  12.13  15.1 2.05e-07  3.58e-04  7.45
922   1824_s_at 1.91   9.24  14.9 2.27e-07  3.58e-04  7.37
140   1126_s_at 1.78   6.88  13.8 4.12e-07  5.78e-04  6.89
580    1536_at  2.66   5.94  13.3 5.80e-07  7.32e-04  6.61
12542   981_at  1.82   7.78  13.1 6.47e-07  7.42e-04  6.52
3283  33252_at  1.74   8.00  12.6 8.86e-07  9.20e-04  6.25
546    1505_at  2.40   8.76  12.5 9.48e-07  9.20e-04  6.19
4405  34363_at -1.75   5.55 -12.2 1.14e-06  1.03e-03  6.03
985   1884_s_at 2.80   9.03  12.1 1.26e-06  1.06e-03  5.95
6194  36134_at  2.49   8.28  11.8 1.51e-06  1.19e-03  5.79
7557  37485_at  1.61   6.67  11.4 1.99e-06  1.48e-03  5.55
1244   239_at  1.57  11.25  10.4 4.08e-06  2.66e-03  4.90
8195  38116_at  2.32   9.51  10.4 4.09e-06  2.66e-03  4.90
10634 40533_at  1.26   8.47  10.4 4.21e-06  2.66e-03  4.87
> topTable(fit2,coef="E48",n=20)
      ID logFC AveExpr      t P.Value adj.P.Val      B
12472   910_at  3.86   9.66  29.2 8.27e-10  1.04e-05 11.61
1814  31798_at  3.60  12.12  21.1 1.28e-08  7.63e-05  9.89
```

953	1854_at	3.34	8.53	20.2	1.81e-08	7.63e-05	9.64
8195	38116_at	3.76	9.51	16.9	8.12e-08	2.51e-04	8.48
8143	38065_at	2.99	9.10	16.2	1.12e-07	2.51e-04	8.21
9848	39755_at	1.77	12.13	15.8	1.36e-07	2.51e-04	8.05
642	1592_at	2.30	8.31	15.8	1.39e-07	2.51e-04	8.03
11509	41400_at	2.24	10.04	15.3	1.82e-07	2.75e-04	7.81
3766	33730_at	-2.04	8.57	-15.1	1.96e-07	2.75e-04	7.74
732	1651_at	2.97	10.50	14.8	2.39e-07	3.02e-04	7.57
8495	38414_at	2.02	9.46	14.6	2.66e-07	3.05e-04	7.48
1049	1943_at	2.19	7.60	14.0	3.72e-07	3.69e-04	7.18
10214	40117_at	2.28	9.68	14.0	3.80e-07	3.69e-04	7.16
10634	40533_at	1.64	8.47	13.5	4.94e-07	4.45e-04	6.93
9735	39642_at	1.61	7.88	13.0	6.71e-07	5.18e-04	6.65
4898	34851_at	1.96	9.96	12.8	7.51e-07	5.18e-04	6.55
922	1824_s_at	1.64	9.24	12.8	7.95e-07	5.18e-04	6.50
6053	35995_at	2.76	8.87	12.7	8.33e-07	5.18e-04	6.46
12455	893_at	1.54	10.95	12.7	8.43e-07	5.18e-04	6.45
10175	40079_at	-2.41	8.23	-12.6	8.63e-07	5.18e-04	6.42

11.5 Weaver Mutant Data: A 2x2 Factorial Experiment with Two-Color Data

This case study considers a more involved analysis in which the sources of RNA have a factorial structure.

Background. This is a case study examining the development of certain neurons in wild-type and weaver mutant mice from [6]. The weaver mutant affects cerebellar granule neurons, the most numerous cell-type in the central nervous system. Weaver mutant mice are characterized by a weaving gait. Granule cells are generated in the first postnatal week in the external granule layer of the cerebellum. In normal mice, the terminally differentiated granule cells migrate to the internal granule layer but in mutant mice the cells die before doing so, meaning that the mutant mice have strongly reduced numbers of cells in the internal granule layer. The expression level of any gene which is specific to mature granule cells, or is expressed in response to granule cell derived signals, is greatly reduced in the mutant mice.

Tissue dissection and RNA preparation. At each time point (P11 = 11 days postnatal and P21 = 21 days postnatal) cerebella were isolated from two wild-type and two mutant littermates and pooled for RNA isolation. RNA was then divided into aliquots and labelled before hybridizing to the arrays. (This means that different hybridizations are biologically related through using RNA from the same mice, although we will ignore this here. See Yang and Speed (2002) for a detailed discussion of this issue in the context of this experiment.)

Hybridizations. There are four different treatment combinations, P11wt, P11mt, P21wt and P21mt, which might think of as a 2x2 factorial structure. We consider ten arrays in total. There are six arrays comparing the four different RNA sources to a common reference, which was a pool of RNA from all the time points, and four arrays making direct comparisons between the four treatment combinations.

First read in the data. We assume that the data is an directory called `c:/Weaver`. The data used for this case study can be downloaded from <http://bioinf.wehi.edu.au/limma/data/weaver.zip>. We first read in the targets frame, and then read the intensity data using file names recorded in the targets file. The data was produced using SPOT image analysis software and is stored in the subdirectory `/spot`. Notice that a spot quality weight function as been set. For these arrays the median spot area is just over 50 pixels. The spot quality function has been set so that any spot with an area less than 50 pixels will get reduced weight, so that a hypothetical spot of zero area would get zero weight.

```
> library(limma)
> targets <- readTargets("targets.txt")
> targets

      FileName      Tissue Mouse  Cy5  Cy3
cbmut.3  cbmut.3.spot Cerebellum Weaver P11wt Pool
cbmut.4  cbmut.4.spot Cerebellum Weaver P11mt Pool
cbmut.5  cbmut.5.spot Cerebellum Weaver P21mt Pool
cbmut.6  cbmut.6.spot Cerebellum Weaver P21wt Pool
cbmut.15 cbmut.15.spot Cerebellum Weaver P21wt Pool
cbmut.16 cbmut.16.spot Cerebellum Weaver P21mt Pool
cb.1     cb.1.spot Cerebellum Weaver P11wt P11mt
cb.2     cb.2.spot Cerebellum Weaver P11mt P21mt
cb.3     cb.3.spot Cerebellum Weaver P21mt P21wt
cb.4     cb.4.spot Cerebellum Weaver P21wt P11wt

> wtfun <- function(x) pmin(x$area/50, 1)
> RG <- read.maimages(targets, source = "spot", path = "spot", wt.fun = wtfun)

Read spot/cbmut.3.spot
Read spot/cbmut.4.spot
Read spot/cbmut.5.spot
Read spot/cbmut.6.spot
Read spot/cbmut.15.spot
Read spot/cbmut.16.spot
Read spot/cb.1.spot
Read spot/cb.2.spot
Read spot/cb.3.spot
Read spot/cb.4.spot
```

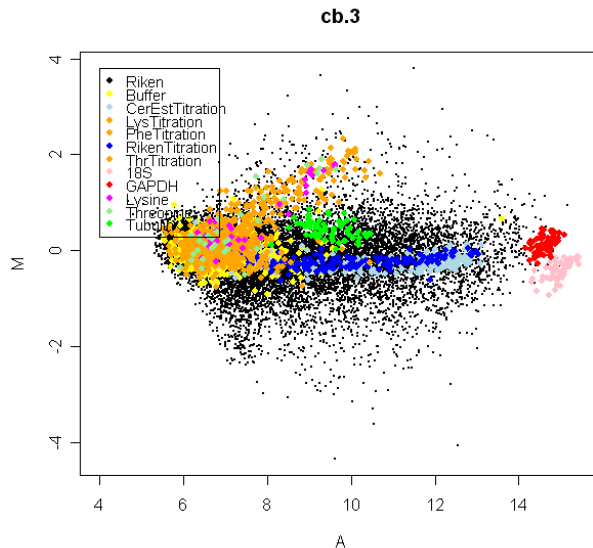
The SPOT software does not store probe IDs in the output files, so we need to read in the probe IDs and Genbank accession numbers from a separate file. We also read in a spot-types file and set a range of control spots.

```
> Annotation <- read.delim("091701RikenUpdatev3.txt", header = TRUE, comment.char="",
+                          quote="\"", as.is = TRUE, check.names=FALSE)
> names(Annotation)
[1] "ReArrayID"          "Accession #, GenBank"      "description (Riken)"
[4] "Cluster ID (UniGene)"    "2nd description (UniGene)"
> RG$genes <- data.frame(Accession=I(Annotation[,2]))
> spottypes <- readSpotTypes("spottypes.txt")
```

```

> spottypes
      SpotType      Accession      col cex
1      Riken          *        black 0.2
2      Buffer          3x SSC    yellow 1.0
3      CerEstTitration cer est \\(* lightblue 1.0
4      LysTitration   Lys \\(*   orange 1.0
5      PheTitration   Phe \\(*   orange 1.0
6      RikenTitration Riken est \\(*   blue 1.0
7      ThrTitration   Thr \\(*   orange 1.0
8      18S            18S \\(0.15ug/ul\\) pink 1.0
9      GAPDH          GAPDH \\(0.15 ug/ul\\) red 1.0
10     Lysine          Lysine \\(0.2 ug/ul\\) magenta 1.0
11     Threonine      Threonine \\(0.2ug/ul\\) lightgreen 1.0
12     Tubulin        Tubulin \\(0.15 ug/ul\\) green 1.0
> RG$genes$Status <- controlStatus(spottypes, RG)
Matching patterns for: Accession
Found 19200 Riken
Found 710 Buffer
Found 192 CerEstTitration
Found 224 LysTitration
Found 260 PheTitration
Found 160 RikenTitration
Found 224 ThrTitration
Found 64 18S
Found 64 GAPDH
Found 32 Lysine
Found 32 Threonine
Found 64 Tubulin
Setting attributes: values col cex
> plotMA(RG,array=9,xlim=c(4,15.5))

```



Here Buffer is an obvious negative control while 18S, GAPDH, Lysine, Threonine and Tubulin are single-gene positive controls, sometime called house-keeping genes. RikenTitration is a

titration series of a pool of the entire Riken library, and can be reasonably expected to be non-differentially expressed. CerEstTitration is a titration of a pool of a cerebellum EST library. This will show higher expression in later mutant tissues. The Lys, Phe and Thr series are single-gene titration series which were not spike-in in this case and can be treated as negative controls.

Now normalize the data. Because the Riken titration library, being based on a pool of a large number of non-specific genes, should not be differentially expressed, we up-weight these spots in the print-tip normalization step:

```
> w <- modifyWeights(RG$weights, RG$genes$Status, "RikenTitration", 2)
> RG$printer <- list(ngrid.r = 8, ngrid.c = 4, nspot.r = 25, nspot.c = 24)
> MA <- normalizeWithinArrays(RG, weights = w)
```

Now fit a linear model to the data. Because of the composite design, with some common reference arrays and some direct comparison arrays, the simplest method is to use a group-mean parametrization with all RNA samples compared back to the Pool.

```
> design <- modelMatrix(targets, ref = "Pool")
```

```
Found unique target names:
  P11mt P11wt P21mt P21wt Pool
```

```
> design
```

	P11mt	P11wt	P21mt	P21wt
cbmut.3	0	1	0	0
cbmut.4	1	0	0	0
cbmut.5	0	0	1	0
cbmut.6	0	0	0	1
cbmut.15	0	0	0	1
cbmut.16	0	0	1	0
cb.1	-1	1	0	0
cb.2	1	0	-1	0
cb.3	0	0	1	-1
cb.4	0	-1	0	1

All the control spots are removed before fitting the linear model:

```
> isGene <- MA$genes$Status == "Riken"
> fit <- lmFit(MA[isGene, ], design)
```

We now extract all possible comparisons of interest as contrasts. We look for the mutant vs wt comparisons at 11 and 21 days, the time effects for mutant and wt, and the interaction terms:

```
> cont.matrix <- makeContrasts(
+   WT11.MT11=P11mt-P11wt,
+   WT21.MT21=P21mt-P21wt,
+   WT11.WT21=P21wt-P11wt,
+   MT11.MT21=P21mt-P11mt,
+   Int=(P21mt-P11mt)-(P21wt-P11wt),
+   levels=design)
> fit2 <- contrasts.fit(fit, cont.matrix)
> fit2 <- eBayes(fit2)
```

Adjustment for multiple testing, using Benjamini and Hochberg's method to control the false discovery rate at 5% across all genes and all contrasts, leads to the following:

```
> results <- decideTests(fit2,method="global")
> summary(results)
      WT11.MT11 WT21.MT21 WT11.WT21 MT11.MT21 Int
-1          3         20         102         109    5
0         17167        17118        17000        16890 17154
1           4          36          72          175   15
```

To see details on the 20 genes which have significant interactions, there are many methods, for example:

```
> i <- as.logical(results[, "Int"])
> topTable(fit2[i,], n=20)
      Accession Status WT11.MT11 WT21.MT21 WT11.WT21 MT11.MT21 Int AveExpr F P.Value adj.P.Val
2   AK027261  Riken    0.7588    2.544    -3.510    -1.726  1.78   11.48 84.1 1.59e-07 1.16e-06
5   AV083843  Riken   -0.1738    1.623     1.354     3.151  1.80   10.52 81.2 1.89e-07 1.16e-06
12  AV088030  Riken   -0.5281    1.347     0.863     2.738  1.88    9.93 78.6 2.22e-07 1.16e-06
8   AV006630  Riken    0.0900    1.933    -2.788    -0.945  1.84    9.77 77.9 2.31e-07 1.16e-06
14  AV033559  Riken   -0.9008   -3.778     2.325    -0.552 -2.88   12.08 61.6 7.26e-07 2.66e-06
9   AV085981  Riken   -0.6961    0.825     1.058     2.579  1.52   10.47 60.4 7.97e-07 2.66e-06
16  AV122249  Riken   -0.1856    1.649    -2.509    -0.675  1.83   10.27 54.9 1.26e-06 3.61e-06
10  AV104464  Riken    0.0984    3.047    -3.549    -0.600  2.95   10.49 42.1 4.49e-06 9.18e-06
17  AV010442  Riken   -0.0373    2.119    -3.259    -1.103  2.16    9.50 41.9 4.58e-06 9.18e-06
11  AV140268  Riken   -0.0206    2.553    -3.776    -1.202  2.57   10.55 41.9 4.59e-06 9.18e-06
18  AV038977  Riken    0.2346    2.992    -3.432    -0.675  2.76   10.52 37.4 7.87e-06 1.43e-05
15  AK014286  Riken   -0.5371    0.798     0.508     1.843  1.34   13.12 31.3 1.80e-05 2.81e-05
1   AK005530  Riken    1.1493   -0.837     1.739    -0.247 -1.99    8.47 31.1 1.83e-05 2.81e-05
7   AV032929  Riken   -0.7857    1.601     0.244     2.631  2.39   11.61 28.6 2.70e-05 3.85e-05
6   AV064755  Riken   -0.3588    1.604     0.167     2.130  1.96    9.80 24.2 5.71e-05 7.50e-05
20  AV058729  Riken    0.3599   -1.318     1.992     0.314 -1.68    7.99 23.9 6.00e-05 7.50e-05
3   AV080627  Riken   -0.0326    1.228    -1.101     0.159  1.26   10.09 22.7 7.63e-05 8.77e-05
13  AK011040  Riken   -2.1954    0.777    -0.140     2.832  2.97   12.63 22.5 7.89e-05 8.77e-05
4   AV058530  Riken    0.4233   -0.939     1.005    -0.357 -1.36   12.32 21.5 9.63e-05 1.01e-04
19  AK005382  Riken    1.2686   -1.161     2.101    -0.329 -2.43    9.40 20.6 1.17e-04 1.17e-04
```

11.6 Bob Mutant Data: Within-Array Replicate Spots

In this section we consider a case study in which all genes (ESTs and controls) are printed more than once on the array. This means that there is both within-array and between-array replication for each gene. The structure of the experiment is therefore essentially a randomized block experiment for each gene. The approach taken here is to estimate a common correlation for all the genes for between within-array duplicates. The theory behind the approach is explained in [27]. This approach assumes that all genes are replicated the same number of times on the array and that the spacing between the replicates is entirely regular.

In this example we assume that the data is available as an `RGList`.

Background. This data is from a study of transcription factors critical to B cell maturation by Lynn Corcoran and Wendy Dietrich at the WEHI. Mice which have a targeted mutation in

the Bob (OBF-1) transcription factor display a number of abnormalities in the B lymphocyte compartment of the immune system. Immature B cells that have emigrated from the bone marrow fail to differentiate into full fledged B cells, resulting in a notable deficit of mature B cells.

Arrays. Arrays were printed at the Australian Genome Research Facility with expressed sequence tags (ESTs) from the National Institute of Aging 15k mouse clone library, plus a range of positive, negative and calibration controls. The arrays were printed using a 48 tip print head and 26x26 spots in each tip group. Data from 24 of the tip groups are given here. Every gene (ESTs and controls) was printed twice on each array, side by side by rows. The NIA15k probe IDs have been anonymized in the output presented here.

Hybridizations. A retrovirus was used to add Bob back to a Bob deficient cell line. Two RNA sources were compared using 2 dye-swap pairs of microarrays. One RNA source was obtained from the Bob deficient cell line after the retrovirus was used to add GFP ("green fluorescent protein", a neutral protein). The other RNA source was obtained after adding both GFP and Bob protein. RNA from Bob+GFP was labelled with Cy5 in arrays 2 and 4, and with Cy3 in arrays 1 and 4.

Image analysis. The arrays were image analyzed using SPOT with "morph" background estimation.

The data used for this case study can be downloaded from <http://bioinf.wehi.edu.au/limma/data/Bob.RData>. The file should be placed in the working directory of your R session. (This case study was last updated on 29 June 2006 using R 2.3.0 and limma 2.7.5.)

```
> library(limma)
> load("Bob.RData")
> objects()
[1] "design" "RG"
> design
[1] -1  1 -1  1
> names(RG)
[1] "R"      "G"      "Rb"     "Gb"     "genes"  "printer"
> RG$genes[1:40,]
  Library      ID
1 Control    cDNA1.500
2 Control    cDNA1.500
3 Control Printing.buffer
4 Control Printing.buffer
5 Control Printing.buffer
6 Control Printing.buffer
7 Control Printing.buffer
8 Control Printing.buffer
9 Control    cDNA1.500
10 Control   cDNA1.500
11 Control Printing.buffer
12 Control Printing.buffer
13 Control Printing.buffer
14 Control Printing.buffer
15 Control Printing.buffer
```

```

16 Control Printing.buffer
17 Control      cDNA1.500
18 Control      cDNA1.500
19 Control Printing.buffer
20 Control Printing.buffer
21 Control Printing.buffer
22 Control Printing.buffer
23 Control Printing.buffer
24 Control Printing.buffer
25 Control      cDNA1.500
26 Control      cDNA1.500
27 NIA15k       H31
28 NIA15k       H31
29 NIA15k       H32
30 NIA15k       H32
31 NIA15k       H33
32 NIA15k       H33
33 NIA15k       H34
34 NIA15k       H34
35 NIA15k       H35
36 NIA15k       H35
37 NIA15k       H36
38 NIA15k       H36
39 NIA15k       H37
40 NIA15k       H37

```

Although there are only four arrays, we have a total of eight spots for each gene, and more for the controls. Naturally the two M-values obtained from duplicate spots on the same array are highly correlated. The problem is how to make use of the duplicate spots in the best way. The approach taken here is to estimate the spatial correlation between the adjacent spots using REML and then to conduct the usual analysis of the arrays using generalized least squares.

First normalize the data using print-tip loess regression. The SPOT morph background ensures that the default background subtraction can be used without inducing negative intensities.

```
> MA <- normalizeWithinArrays(RG)
```

Then remove the control probes:

```
> MA2 <- MA[MA$genes$Library=="NIA15k", ]
```

Now estimate the spatial correlation. We estimate a correlation term by REML for each gene, and then take a trimmed mean on the atanh scale to estimate the overall correlation. This command will probably take at least a few minutes depending on the speed of your computer.

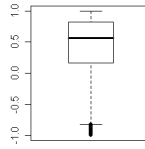
```

> options(digits=3)
> corfit <- duplicateCorrelation(MA2,design,ndups=2) # A slow computation!
Loading required package: statmod
> corfit$consensus.correlation

```



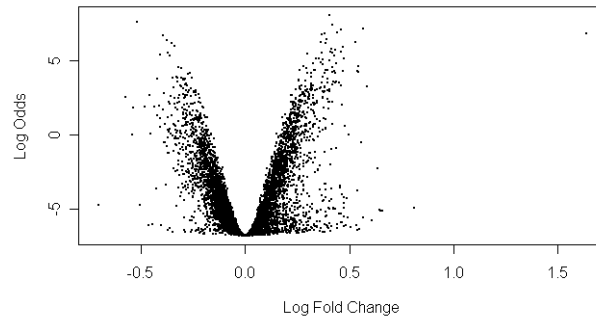
```
[1] 0.575
> boxplot(tanh(corfit$atanh.correlations))
```



```
> fit <- lmFit(MA2,design,ndups=2,correlation=corfit$consensus)
> fit <- eBayes(fit)
> topTable(fit,n=30,adjust="BH")
```

	Library	ID	logFC	AveExpr	t	P.Value	adj.P.Val	B
4599	NIA15k	H34599	0.404	10.93	12.92	1.34e-07	0.000443	8.02
1324	NIA15k	H31324	-0.520	7.73	-12.24	2.23e-07	0.000443	7.57
3309	NIA15k	H33309	0.420	10.99	11.99	2.71e-07	0.000443	7.39
440	NIA15k	H3440	0.568	9.96	11.64	3.60e-07	0.000443	7.13
6795	NIA15k	H36795	0.460	10.78	11.56	3.85e-07	0.000443	7.07
121	NIA15k	H3121	0.441	10.48	11.31	4.73e-07	0.000443	6.88
2838	NIA15k	H32838	1.640	12.74	11.26	4.92e-07	0.000443	6.84
6999	NIA15k	H36999	0.381	9.91	11.19	5.21e-07	0.000443	6.79
132	NIA15k	H3132	0.370	10.10	11.17	5.31e-07	0.000443	6.77
6207	NIA15k	H36207	-0.393	8.53	-11.06	5.82e-07	0.000443	6.69
7168	NIA15k	H37168	0.391	9.88	10.76	7.51e-07	0.000493	6.45
1831	NIA15k	H31831	-0.374	9.62	-10.63	8.41e-07	0.000493	6.35
2014	NIA15k	H32014	0.363	9.65	10.49	9.54e-07	0.000493	6.23
7558	NIA15k	H37558	0.532	11.42	10.49	9.58e-07	0.000493	6.22
4471	NIA15k	H34471	-0.353	8.76	-10.41	1.02e-06	0.000493	6.16
126	NIA15k	H3126	0.385	10.59	10.40	1.03e-06	0.000493	6.15
4360	NIA15k	H34360	-0.341	9.37	-10.22	1.21e-06	0.000545	6.00
6794	NIA15k	H36794	0.472	11.33	10.11	1.35e-06	0.000570	5.90
329	NIA15k	H3329	0.413	11.37	9.97	1.53e-06	0.000612	5.78
5017	NIA15k	H35017	0.434	11.41	9.90	1.63e-06	0.000618	5.72
2678	NIA15k	H32678	0.461	10.44	9.74	1.90e-06	0.000618	5.57
2367	NIA15k	H32367	0.409	10.21	9.72	1.93e-06	0.000618	5.56
1232	NIA15k	H31232	-0.372	8.72	-9.70	1.96e-06	0.000618	5.54
111	NIA15k	H3111	0.369	10.42	9.69	1.98e-06	0.000618	5.53
2159	NIA15k	H32159	0.418	10.19	9.67	2.03e-06	0.000618	5.51
4258	NIA15k	H34258	0.299	9.11	9.62	2.12e-06	0.000622	5.47
3192	NIA15k	H33192	-0.410	9.46	-9.55	2.26e-06	0.000638	5.41
6025	NIA15k	H36025	0.427	10.37	9.47	2.45e-06	0.000654	5.33
5961	NIA15k	H35961	-0.362	8.50	-9.46	2.49e-06	0.000654	5.31
1404	NIA15k	H31404	0.474	11.34	9.26	3.00e-06	0.000722	5.13

```
> volcano(fit)
```



11.7 Illumina WG-6 Case Study: Mammary Progenitor Cell Populations

In this section we consider a case study in which four mammary cell subpopulations were hybridized to two Illumina HumanWG-6 version 3 BeadChips. The case study includes reading in the data, data display and exploration, as well as normalization and differential expression analysis.

Background. To delineate epithelial subpopulations in human mammary tissue, hematopoietic and endothelial cells were depleted from freshly isolated cell suspensions derived from reduction mammoplasties by fluorescence-activated cell sorting. The resultant Lin- population was fractionated into four distinct subpopulations using CD49f (α6-integrin) and epithelial cell adhesion molecule (EpCAM; also referred to as CD326 and ESA). Based on the immunohistochemical phenotype, and in vivo and in vitro functional assays, these subpopulations were identified as fibroblast-enriched stromal (CD49f -EpCAM-), mammary stem cell (MaSC)-enriched (CD49f hiEpCAM-), luminal progenitor (CD49f +EpCAM+), and mature luminal (CD49f EpCAM+) cell subpopulations. Microarray profiling was used to derive gene expression signatures representative of these subpopulations using freshly sorted cells (>90% purity) from normal breast tissue [15].

The hybridizations. Total RNA were purified from sorted cell populations and fresh frozen human breast tissue with the RNeasy Micro kit (Qiagen). Either 180 ng (for total human breast tissue) or up to 500 ng (for sorted cell populations) was labeled with the Total Prep RNA amplification kit (Ambion). Labeled complementary RNA (1.5 ug) was prepared for hybridization to Illumina HumanWG-6 V3 BeadChips. Un-normalized summary probe profiles (including regular probe profile and control probe profile), with associated probe annotation, were output from BeadStudio.

Data availability. Data used in this case study can be downloaded from the url: <http://bioinf.wehi.edu.au/marray/IlluminaCaseStudy/>

Read in both expression data and control data:

```
> library(limma)
```

```

> x <- read.ilmn(files="probe profile.txt",ctrlfiles="control probe profile.txt",
+ other.columns="Detection")
Reading file probeprofile.txt ... ..
Reading file controlprobeprofile.txt ... ..
> options(digits=3)
> x
An object of class "EListRaw"
$E
      1      2      3      4      5      6      7      8      9     10     11     12
ILMN_1762337 52.3 46.1 54.0 47.7 54.8 47.4 67.4 47.9 40.5 44.7 80.6 42.5
ILMN_2055271 69.9 73.9 58.6 72.4 77.1 82.1 69.1 81.3 79.1 82.5 87.0 60.9
ILMN_1736007 57.5 53.7 53.4 49.4 58.6 59.9 56.4 51.6 58.7 51.7 58.4 43.9
ILMN_2383229 53.6 57.5 48.2 48.2 61.8 64.5 52.7 43.5 65.5 49.8 53.9 39.3
ILMN_1806310 58.1 55.1 50.5 60.0 64.2 58.4 58.0 52.3 56.6 55.6 65.3 46.4
49582 more rows ...

$genes
      PROBE_ID SYMBOL  Status
1  ILMN_1762337   7A5 regular
2  ILMN_2055271  A1BG regular
3  ILMN_1736007  A1BG regular
4  ILMN_2383229  A1CF regular
5  ILMN_1806310  A1CF regular
49582 more rows ...

$targets
[1] "1" "2" "3" "4" "5"
7 more rows ...

$other
$Detection
      1      2      3      4      5      6      7      8      9
ILMN_1762337 0.5585 0.675 0.1370 0.60139 0.5776 0.782 0.0503 0.478 0.9082
ILMN_2055271 0.0306 0.000 0.0493 0.00278 0.0364 0.000 0.0391 0.000 0.0000
ILMN_1736007 0.2772 0.292 0.1534 0.48611 0.4112 0.220 0.2318 0.315 0.1554
ILMN_2383229 0.4735 0.187 0.3658 0.56389 0.2951 0.124 0.3408 0.745 0.0537
ILMN_1806310 0.2618 0.248 0.2589 0.12778 0.2196 0.264 0.1955 0.292 0.1963
      10     11     12
ILMN_1762337 0.714 0.000 0.460
ILMN_2055271 0.000 0.000 0.000
ILMN_1736007 0.377 0.254 0.360
ILMN_2383229 0.468 0.399 0.747
ILMN_1806310 0.238 0.122 0.203
49582 more rows ...

```

Show the number of regular probes and numbers of different types of control probes.

```

> table(x$genes$Status)
      BIOTIN      CY3_HYB      HOUSEKEEPING
      2          6          7
      LABELING LOW_STRINGENCY_HYB      NEGATIVE
      2          8          759

```

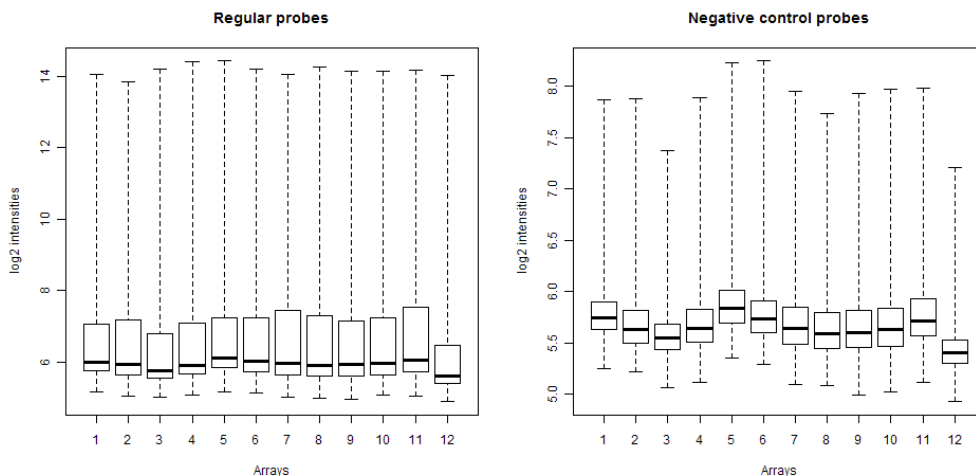
```
regular
48803
```

Read in target file:

```
> targets <- readTargets()
> targets
  Ptnumber Age Digest Subpopulation SampleNo SentrrixBarcode SampleSection SecP Type
1 08RMH263 39 9hr P5(Myo/stem) 1 4380071023 A P5 MS
2 08RMH263 39 9hr P6(Stromal) 2 4380071023 B P6 stroma
3 08RMH263 39 9hr P7(MatureLum) 3 4380071023 C P7 mL
4 08RMH263 39 9hr P8(ProgenLum) 4 4380071023 D P8 pL
5 08RMH313 57 9hr P5(Myo/stem) 5 4380071023 E P5 MS
6 08RMH313 57 9hr P6(Stromal) 6 4380071023 F P6 stroma
7 08RMH313 57 9hr P7(MatureLum) 7 4380071027 A P7 mL
8 08RMH313 57 9hr P8(ProgenLum) 8 4380071027 B P8 pL
9 08RMH434 21 5hr P5(Myo/stem) 9 4380071027 C P5 MS
10 08RMH434 21 5hr P6(Stromal) 10 4380071027 D P6 stroma
11 08RMH434 21 5hr P7(MatureLum) 11 4380071027 E p7 mL
12 08RMH434 21 5hr P8(ProgenLum) 12 4380071027 F p8 pL
```

Boxplots for regular probes and negative control probes:

```
> boxplot(log2(x$E[x$genes$Status=="regular",]),range=0,
> xlab="Arrays",ylab="log2 intensities", main="Regular probes")
> boxplot(log2(x$E[x$genes$Status=="NEGATIVE",]),range=0,
> xlab="Arrays",ylab="log2 intensities", main="Negative control probes")
```



Estimate the proportion of expressed probes for each array.

```
> proportion <- propexpr(x)
> names(proportion) <- targets$Type
> proportion
  MS stroma  mL  pL  MS stroma
0.557 0.518 0.549 0.555 0.504 0.514
```

```

      mL      pL      MS stroma      mL      pL
0.495 0.518 0.529 0.514 0.535 0.517
> tapply(proportion, targets$Type, mean)
      mL      MS      pL stroma
0.526 0.530 0.530 0.515

```

Perform normexp-by-control background correction, quantile normalization and \log_2 transformation to the raw data:

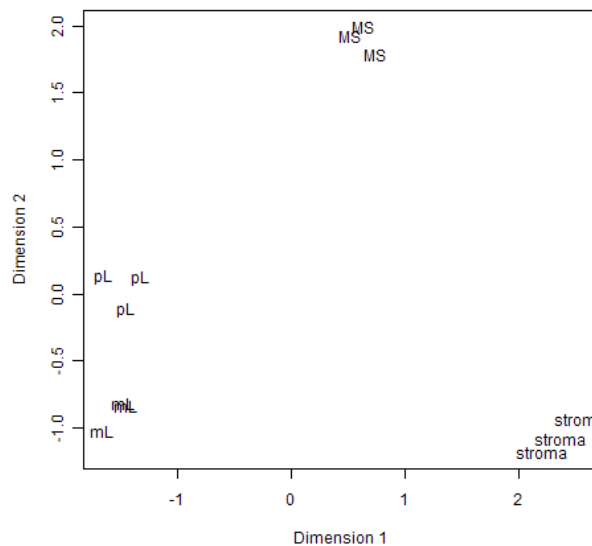
```
> y <- neqc(x)
```

Filter out probes which were not expressed in all cell type:

```
> expressed <- apply(y$other$Detection < 0.05,1,any)
> y <- y[expressed,]
```

Check whether the cell types cluster together:

```
> plotMDS(y,labels=targets$Type)
```



Fit a linear model for each probe:

```
> ct <- factor(targets$Type)
> design <- model.matrix(~0+ct)
> colnames(design) <- levels(ct)
> fit <- lmFit(y,design)
```

Perform differential expression analysis and get the number of differential expressed genes:

```

> contrasts <- makeContrasts(MS-mL, MS-pL, mL-pL, levels=design)
> contrasts.fit <- eBayes(contrasts.fit(fit, contrasts))
> summary(decideTests(contrasts.fit, method="global"))
  MS - mL MS - pL mL - pL
-1   2917   2582   1335
 0   22907  23540  25744
 1    2634   2336   1379

```

Top 10 differentially expressed genes between cell types “MS” and “mL”.

```

> topTable(contrasts.fit, coef=1)
  PROBE_ID SYMBOL logFC AveExpr t P.Value adj.P.Val B
13343 ILMN_1766707 IL17B 4.19 5.94 42.6 1.36e-12 3.87e-08 17.6
3907 ILMN_1783149 CDH23 4.25 7.01 35.9 7.28e-12 1.04e-07 16.6
20929 ILMN_1706051 PLD5 4.00 5.67 30.5 3.70e-11 3.51e-07 15.5
3248 ILMN_1666775 CACNA1C 4.11 6.54 29.4 5.30e-11 3.61e-07 15.2
26055 ILMN_1811426 TMTC1 5.41 7.16 28.8 6.34e-11 3.61e-07 15.1
1091 ILMN_1777998 ARHGAP25 4.78 6.26 27.6 9.81e-11 4.13e-07 14.7
15261 ILMN_1669819 LOC402569 -2.52 5.50 -27.5 1.01e-10 4.13e-07 14.7
8474 ILMN_2413323 GRP 6.60 6.82 26.7 1.36e-10 4.17e-07 14.5
2580 ILMN_1669123 C1orf187 3.36 5.84 26.6 1.39e-10 4.17e-07 14.5
8475 ILMN_1777199 GRP 5.47 6.36 26.3 1.59e-10 4.17e-07 14.4

```

Notes

Acknowledgements

Thanks to Yee Hwa Yang and Sandrine Dudoit for the first three data sets. The Swirl zebrafish data were provided by Katrin Wuennenburg-Stapleton from the Ngai Lab at UC Berkeley. Laurent Gautier made the *ecoliLeucine* data set available on Bioconductor. Lynn Corcoran provided the Bob Mutant data. Andrew Holloway, Ryan van Laar and Dileepa Diyagama provided the quality control data set.

The *limma* package has benefited from many people who have made suggestions or reported bugs including Naomi Altman, Henrik Bengtsson, Lourdes Peña Castillo, Dongseok Choi, Marcus Davy, Ramon Diaz-Uriarte, Robert Gentleman, Wolfgang Huber, William Kenworthy, Kevin Koh, Erik Kristiansson, Mette Langaas, Michael Lawrence, Gregory Lefebvre, Andrew Lynch, James MacDonald, Martin Maechler, Ron Ophir, Francois Pepin, Hubert Rehrauer, Matthew Ritchie, Ken Simpson, Laurentiu Adi Tarca, Björn Usadel, James Wettenhall, Chris Wilkinson, Yee Hwa (Jean) Yang, John Zhang.

Conventions

Where possible, *limma* tries to use the convention that class names are in upper *CamelCase*, i.e., the first letter of each word is capitalized, while function names are in lower *camelCase*, i.e., first word is lowercase. When periods appear in function names, the first word should be an action while the second word is the name of a type of object on which the function acts.

Software Projects Using *limma*

The *limma* package is used as a building block or as the underlying computational engine by a number of software projects designed to provide user-interfaces for microarray data analysis including RMAGEML [7], arrayMagic, [3], DNMAD [32], GPAP (GenePix Pro Auto-Processor) [33], the KTH Package [25], SKCC WebArray [37], and CARMAweb [12]. The LCBBASE project provides a *limma* plug-in for the BASE database [16]. The Stanford Microarray Database <http://genome-www5.stanford.edu> calls out to *limma* for background correction options.

Citations

Biological studies using the `limma` package include [9, 24, 21, 2, 19, 31]. Methodological studies using the `limma` package include [13, 14].

Bibliography

- [1] Y. Benjamini and Y. Hochberg. Controlling the false discovery rate: a practical and powerful approach to multiple testing. *J. R. Statist. Soc. B*, 57:289–300, 1995.
- [2] P. C. Boutros, I. D. Moffat, M. A. Franc, N. Tijet, J. Tuomisto, R. Pohjanvirta, and A. B. Okey. Identification of the DRE-II gene battery by phylogenetic footprinting. *Biochem Biophys Res Commun*, 321(3):707–715, 2004.
- [3] Andreas Buness, Wolfgang Huber, Klaus Steiner, Holger Sültmann, and Annemarie Poustka. arrayMagic: two-colour cDNA microarray quality control and preprocessing. *Bioinformatics*, 21(4):554–556, 2005.
- [4] M. J. Callow, S. Dudoit, E. L. Gong, T. P. Speed, and E. M. Rubin. Microarray expression profiling identifies genes with altered expression in HDL deficient mice. *Genome Research*, 10:2022–2029, 2000.
- [5] P. Dalgaard. *Introductory Statistics with R*. Springer, New York, 2002.
- [6] E. Diaz, Y. Ge, Y. H. Yang, K. C. Loh, T. A. Serafini, Y. Okazaki, Y. Hayashizaki, T. Speed, J. P., Ngai, and P. Scheiffele. Molecular analysis of gene expression in the developing pontocerebellar projection system. *Neuron*, 36:417–434, 2002.
- [7] Steffen Durinck, Joke Allemeersch, Vincent J. Carey, Yves Moreau, and Bart De Moor. Importing MAGE-ML format microarray data into BioConductor. *Bioinformatics*, 20(18):3641–3642, 2004.
- [8] L Ellis, Y Pan, GK Smyth, DJ George, C McCormack, R Williams-Traux, M Mita, J Beck, G Ryan, P Atadja, D Butterfoss, M Dugan, K Culver, RW Johnstone, and HM Prince. The histone deacetylase inhibitor panobinostat induces clinical responses with associated alterations in gene expression profiles in cutaneous t cell lymphoma. *Clinical Cancer Research*, 14:4500–4510, 2008.
- [9] R. Golden, T. and S. Melov. Microarray analysis of gene expression with age in individual nematodes. *Aging Cell*, 3:111–124, 2004.
- [10] S. Hung, P. Baldi, and G. W. Hatfield. Global gene expression profiling in *Escherichia coli* K12: The effects of leucine-responsive regulatory protein. *Journal of Biological Chemistry*, 277(43):40309–40323, 2002.

- [11] R. Irizarry. From CEL files to annotated lists of interesting genes. In R. Gentleman, V. Carey, S Dudoit, R Irizarry, and W. Huber, editors, *Bioinformatics and Computational Biology Solutions using R and Bioconductor*, pages 431–442. Springer, New York, 2005.
- [12] Rainer J, Sanchez-Cabo F, Stocker G, Sturn A, and Trajanoski Z. CARMAweb: comprehensive r- and bioconductor-based web service for microarray data analysis. *Nucleic Acids Res*, 34(Web Server issue):W498–503, 2006.
- [13] C. Kendzioriski, R. A. Irizarry, K.-S. Chen, J. D. Haag, and M. N. Gould. On the utility of pooling biological samples in microarray experiments. *PNAS*, 102(12):4252–4257, 2005.
- [14] Charles Kooperberg, Aaron Aragaki, Andrew D. Strand, and James M. Olson. Significance testing for small microarray experiments. *Statistics in Medicine*, 24:2281–2298, 2005.
- [15] E. Lim, F. Vaillant, D. Wu, N. C. Forrest, B. Pal, A. H. Hart, M. L. Asselin-Labat, D. E. Gyorki, T. Ward, A. Partanen, F. Feleppa, L. I. Huschtscha, H. J. Thorne, kConFab, S. B. Fox, M. Yan, J. D. French, M. A. Brown, G. K. Smyth, J. E. Visvader, and G. J. Lindeman. Aberrant luminal progenitors as the candidate target population for basal tumor development in BRCA1 mutation carriers. *Nature Medicine*, 15:907–13, 2009.
- [16] Linnaeus Centre for Bioinformatics, Uppsala University, Sweden. BASE plug-ins. Software package, <http://www.lcb.uu.se/baseplugins.php>, 2005.
- [17] G. A. Milliken and D. E. Johnson. *Analysis of Messy Data, Volume 1: Designed Experiments*. Chapman & Hall, New York, 1992.
- [18] A. Oshlack, D. Emslie, L. Corcoran, and G. K. Smyth. Normalization of boutique two-color microarrays with a high proportion of differentially expressed probes. *Genome Biology*, 8:R2, 2007.
- [19] M. J. Peart, G. K. Smyth, R. K. van Laar, V. M. Richon, A. J. Holloway, and R. W. Johnstone. Identification and functional significance of genes regulated by structurally diverse histone deacetylase inhibitors. *Proceedings of the National Academy of Sciences of the United States of America*, 102(10):3697–3702, 2005.
- [20] A. Reiner, D. Yekutieli, and Y. Benjamini. Identifying differentially expressed genes using false discovery rate controlling procedures. *Bioinformatics*, 19:368–375, 2003.
- [21] S. C. P. Renn, N. Aubin-Horth, and H. A. Hofmann. Biologically meaningful expression profiling across species using heterologous hybridization to a cDNA microarray. *BMC Genomics*, 5(42), 2004.
- [22] M. E. Ritchie, D. Diyagama, J. Neilson, R. van Laar, A. Dobrovic, A. Holloway, and G. K. Smyth. Empirical array quality weights in the analysis of microarray data. *BMC Bioinformatics*, 7:261, 2006.

- [23] ME Ritchie, J Silver, A Oshlack, M Holmes, D Diyagama, A Holloway, and GK Smyth. A comparison of background correction methods for two-colour microarrays. *Bioinformatics*, 23:2700–2707, 2007.
- [24] M. W. Rodriguez, A. C. Paquet, Y. H. Yang, and D. J. Erle. Differential gene expression by integrin $\beta 7+$ and $\beta 7-$ memory T helper cells. *BMC Immunology*, 5(13), 2004.
- [25] Royal Institute of Technology, Sweden. KTH-package for microarray data analysis. Software package, <http://www.biotech.kth.se/molbio/microarray/pages/kthpackagetransfer.html>, 2005.
- [26] G. K. Smyth. Paper 116: Individual channel analysis of two-colour microarrays. In *55th Session of the International Statistics Institute, 5-12 April 2005, Sydney Convention & Exhibition Centre, Sydney, Australia (CD)*. International Statistical Institute, Bruxelles, 2005.
- [27] G. K. Smyth, J. Michaud, and H. Scott. The use of within-array replicate spots for assessing differential expression in microarray experiments. *Bioinformatics*, 21(9):2067–2075, 2005.
- [28] G. K. Smyth and T. P. Speed. Normalization of cDNA microarray data. *Methods*, 31(4):265–273, 2003.
- [29] G. K. Smyth, Y. H. Yang, and T. Speed. Statistical issues in cDNA microarray data analysis. *Methods in Molecular Biology*, 224:111–136, 2003.
- [30] G.K. Smyth. Linear models and empirical bayes methods for assessing differential expression in microarray experiments. *Statistical Applications in Genetics and Molecular Biology*, 3:Article 3, 2004.
- [31] Srinivasa Rao Uppalapati, Patricia Ayoubi, Hua Weng, David A. Palmer, Robin E. Mitchell, William Jones, and Carol L. Bender. The phytotoxin coronatine and methyl jasmonate impact multiple phytohormone pathways in tomato. *The Plant Journal*, 42(2):201–217, April 2005.
- [32] Juan M. Vaquerizas, Joaquín Dopazo, and Ramón Díaz-Uriarte. DNMAAD: web-based diagnosis and normalization for microarray data. *Bioinformatics*, 20(18):3656–3658, 2004.
- [33] Hua Weng and Patricia Ayoubi. GPAP (GenePix Pro Auto-Processor) for online preprocessing, normalization and statistical analysis of primary microarray data. Software package, Microarray Core Facility, Oklahoma State University, <http://darwin.biochem.okstate.edu/gpap3>, 2004.
- [34] J. M. Wettenhall, K. M. Simpson, K. Satterley, and G. K. Smyth. affylmGUI: a graphical user interface for linear modeling of single channel microarray data. *Bioinformatics*, 22:897–899, 2006.

- [35] J. M. Wettenhall and G. K. Smyth. limmaGUI: a graphical user interface for linear modeling of microarray data. *Bioinformatics*, 20:3705–3706, 2004.
- [36] R. D. Wolfinger, G. Gibson, E. D. Wolfinger, L. Bennett, H. Hamadeh, P. Bushel, C. Afshari, and R. S. Paules. Assessing gene significance from cDNA microarray expression data via mixed models. *Journal of Computational Biology*, 8:625–637, 2001.
- [37] Xiaoqin Xia, Michael McClelland, and Yipeng Wang. Webarray: an online platform for microarray data analysis. *BMC Bioinformatics*, 6:306, 2005.
- [38] Y. H. Yang, S. Dudoit, P. Luu, D. M. Lin, V. Peng, J. Ngai, and T. P. Speed. Normalization for cDNA microarray data: a robust composite method addressing single and multiple slide systematic variation. *Nucleic Acids Research*, 30(4):e15, 2002.
- [39] Y. H. Yang, S. Dudoit, P. Luu, and T. P. Speed. Normalization for cDNA microarray data. In M. L. Bittner, Y. Chen, A. N. Dorsel, and E. R. Dougherty, editors, *Microarrays: Optical Technologies and Informatics*, pages 141–152. Proceedings of SPIE, Volume 4266, 2001.
- [40] Y. H. Yang and T. P. Speed. Design and analysis of comparative microarray experiments. In T. P. Speed, editor, *Statistical Analysis of Gene Expression Microarray Data*, pages 35–91. Chapman & Hall/CRC Press, 2003.
- [41] Y. H. Yang and N. P. Thorne. Normalization for two-color cDNA microarray data. In D. R. Goldstein, editor, *Science and Statistics: A Festschrift for Terry Speed*, pages 403–418. Institute of Mathematical Statistics Lecture Notes – Monograph Series, Volume 40, 2003.