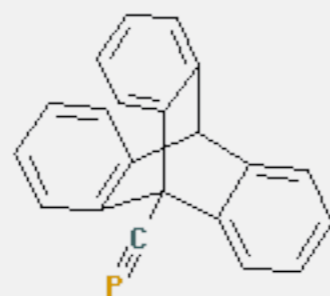
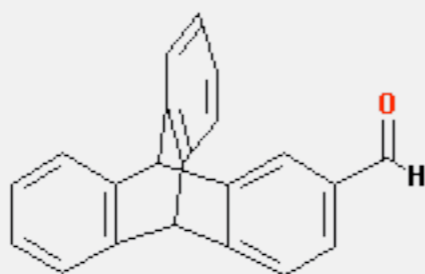
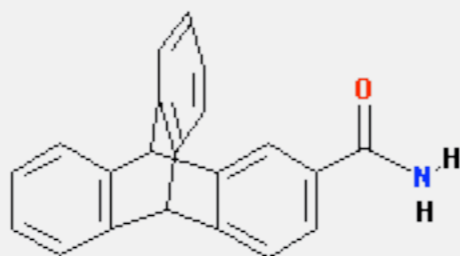


[Home](#)[Readme](#)[2010 Project](#)[Protocols](#)[CMP Sources](#)[Search Database](#)[Annotation](#)[Structure](#)[Screen Data](#)[Workbench](#)[Manage CMPs](#)[Descriptors](#)[Clustering](#)[Clusters](#)[Software](#)[ChemmineR](#)[Links](#)[Login](#)[View Previously Accessed Compounds >>>](#)Width of information table: **Reference Compound (ka-01834)**[View SDF](#)[Structure Search](#)[Add to Selection](#)**Similarities With All**

ids	scores
3	0.550335570
43	0.484662577
42	0.484662577
1	0.484662577
4	0.480122324
2	0.480122324
44	0.356097561
46	0.312500000
11	0.311653117
35	0.287719298

**(ChemmineR\_Unnamed\_Compound\_3)**[View SDF](#)[Structure Search](#)[Add to Selection](#)**Similarities With All**

ids	scores
3	1.000000000
43	0.785977860
42	0.785977860
1	0.785977860
2	0.766423358
4	0.646258503
44	0.561797753
11	0.415204678
35	0.390151515
46	0.368539326

**(ChemmineR\_Unnamed\_Compound\_43)**[View SDF](#)[Structure Search](#)[Add to Selection](#)**Similarities With All**

ids	scores
43	1.000000000
42	0.840000000
1	0.840000000
3	0.785977860
2	0.709459459
4	0.611464968
44	0.601108033
11	0.390109890
46	0.339702760
35	0.323129252